

电动搬运车

Electric pallet truck (Standing on)

产品特性

1. 整车设计美观、稳重，侧站架式操作带有安全扶手，宽大的踏板使操作者更加舒适。
2. 采用先进的立式交流驱动系统，电动机能得到更多的能量及更大的制动扭力，动力更强劲高效、加速性能更好，具有效率高、体积小、质量小、免维护、易于冷却和寿命长等优点；
3. 原装进口CURTIS交流控制器，大功率MOSFETS驱动，高频、高效、安静，具有无级调速及反接制动功能。完善的温度保护和补偿功能实现热保护和稳定输出；
4. 标配起升电限位功能，当货叉升至顶部时，系统自动切断上行电源，平稳停车，同时也能减少能量浪费，延长液压系统及相关部件寿命；
5. 标配急停开关，当车辆处于危险状态时，按下急停开关就能切断电源，车辆停止运转，保护操作者人身和设备的安全；
6. 全系标配电子助力转向系统，助力反应非常敏锐，手柄操控舒适自如，大大降低了操作者的劳动强度。转向低速时轻、高速时稳，转向更加智能、操控更加精准，驾驶感受更加顺畅；
7. 侧面更换蓄电池，更换电池快捷方便。

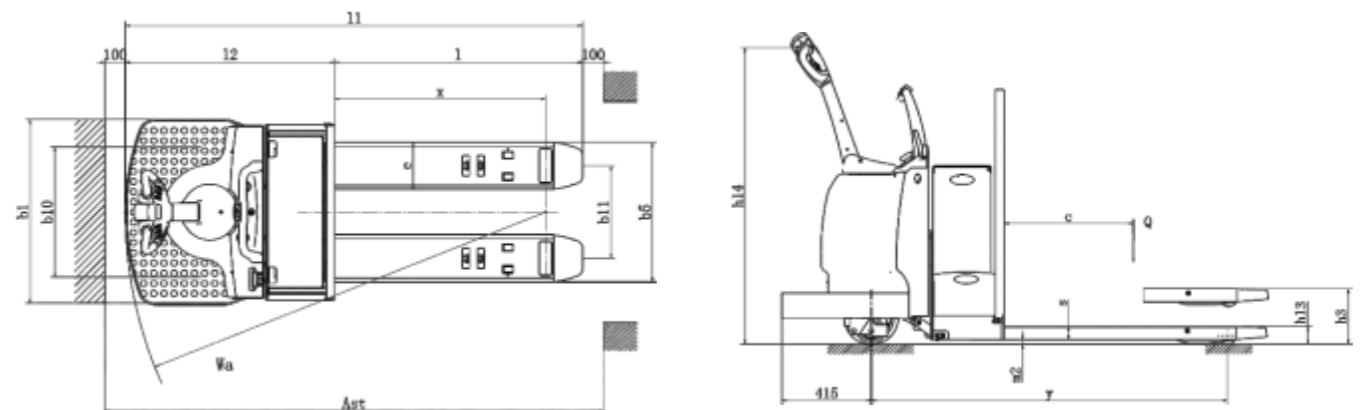
Product Features

1. The whole vehicle design is beautiful and stable. The side stand type operation has safety handrail, and the wide pedal makes the operator more comfortable;
2. Adopt advanced vertical AC drive system, electric function to get more energy and greater braking torque, more powerful and efficient power, better acceleration performance, with high efficiency, small size, small mass, maintenance-free, easy cooling and long life, etc.;
3. CURTIS AC controller, high power MOSFETS drive, high frequency, high efficiency, quiet, with stepless speed regulation and reverse braking function. Perfect temperature protection and compensation function to achieve thermal protection and stable output;
4. Standard lifting limit function, when the fork rises to the top, the system will automatically cut off the uplink power, smooth stop, but also reduce energy waste, prolong the life of hydraulic system and related components;
5. Standard emergency stop switch, when the vehicle is in a dangerous state, press the emergency stop switch can cut off the power supply, the vehicle stops running, to protect the safety of the operator and equipment;
6. The whole system is equipped with electronic power steering system, power response is very sharp, the handle is comfortable and free, greatly reducing the labor intensity of the operator. The steering is light at low speed and stable at high speed. The steering is more intelligent, the control is more accurate, and the driving experience is smoother;
7. Replace the battery on the side, which is quick and convenient.



电动搬运车参数 Technical Data

特征 Characteristics			
1.01	型号	Model	SL30R
1.02	驱动方式	Power unit	电动(Electric)
1.03	操作方式	Operation	步行式(Pedestrian)
1.04	额定载荷能力	Rated traction weight	Q (t) 3
1.05	载荷中心距	Load centre	c (mm) 600
1.06	前悬距	Axle centre to fork face	x (mm) 1036
1.07	轴距	Wheel base	y (mm) 1650
1.08	自重 (含电瓶)	Service weight with battery	kg 790
轮子、底盘 Wheels/Tyres			
2.01	轮胎类型	Wheels type	聚氨酯(PU)
2.02	驱动轮尺寸	Driving wheel size	Φ×w(mm) Φ250×75
2.03	承载轮尺寸	Bearing wheel size	Φ×w(mm) Φ82×165
2.04	平衡轮尺寸	Additional wheels (dimensions)	Φ×w(mm) Φ124×60
2.05	驱动轮，平衡轮/承载轮数量 (x=驱动轮)	Wheels, number front/rear (x = driven)	1x+2/2
2.06	轮距，驱动端	Track width	b10 (mm) 640
2.07	轮距，承载端	Track width	b11 (mm) 455
尺寸 Dimensions			
3.01	提升高度	Lift	h3 (mm) 233
3.02	操作位置手柄杆最小/最大高度	Overall height(With handle	h14 (mm) 930/1340
3.03	货叉最低高度	lowered length	h13 (mm) 83
3.04	整车长度	Overall length	l1 (mm) 2250
3.05	车体长度	Length to fork face	l2 (mm) 1030
3.06	整车宽度	Overall width	b1/ b2 (mm) 910
3.07	货叉尺寸	Fork dimensions	s/e/l (mm) 60/230/ 1220
3.08	货叉外宽	Width of forks	b5 (mm) 685
3.09	轴距中心处离地间隙	Min .Ground clearance	m2 (mm) 23
3.10	通道宽度:1000x1200托盘(1200跨货叉放置)	Aisle width with pallet 1000 x 1200 across forks	Ast (mm) 2450
3.11	通道宽度:800x1200托盘(1200沿货叉放置)	Aisle width with pallet 800 x 1200 along forks	Ast (mm) 2550
3.12	转弯半径	Min .Turning radius	Wa (mm) 2066
性能 Performance			
4.01	行走速度，满载/空载	Travel speed, laden/unladen	(km/h) 7.5/8
4.02	提升速度，满载/空载	Lifting speed, with/without load	(mm/s) 42/65
4.03	下降速度，满载/空载	Lowering speed, with/without load	(mm/s) 36/30
4.04	最大爬坡度，满载/空载	Maximum climbing ability, with/without load	(%) 5/15
4.05	制动类型	Service brake	电磁制动(Electromagnetic)
电机 Drive			
5.01	驱动电机功率	Drive motor, 60 minute rating	(kW) 3
5.02	起升电机功率	Lift motor rating at S3 15%	(kW) 2.2
5.03	蓄电池电压/容量	Battery voltage/rated capacity	(V/Ah) 24/280
5.04	电池重量(±5%)	Battery weight (± 5%)	(kg) 250
其它 Other			
6.01	驱动控制类型	Type of drive control	交流速度控制(AC)
6.02	噪音水平	Noise level at operator 's ear	(dB(A)) ≤70
6.03	转向类型	Type of steering	电子助力(Electric)



全电动托盘搬运车

Electric pallet truck (Standing on)

产品特性

1. 驱动系统中间设浮动支架,确保车辆运行的稳定性,转弯时车身平稳、不倾斜。
2. 具备断电刹车功能,手柄松开或压到底部,车辆立即断电刹车。
3. 全系标配电子助力转向系统,助力反应非常敏锐,手柄操控舒适自如。
4. 原装进口交流控制器为系统提供了无以伦比的灵活性和精确的速度控制。
5. 配置增压油缸,速度快、出力大、能耗低,防止重载时出现打滑现象。
6. 标配蓄电池侧拉配置,更换蓄电池更加方便快速,方便连续作业,大大提高工作效率。

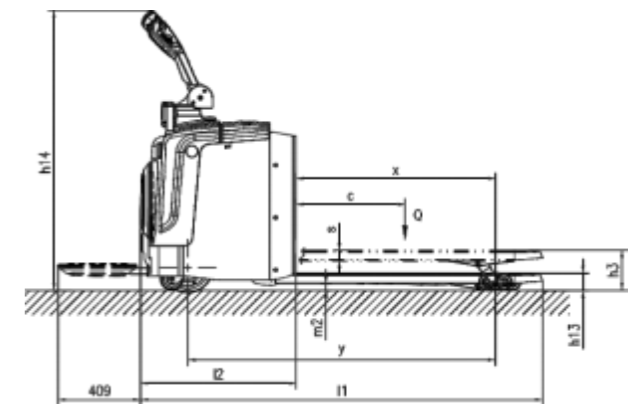
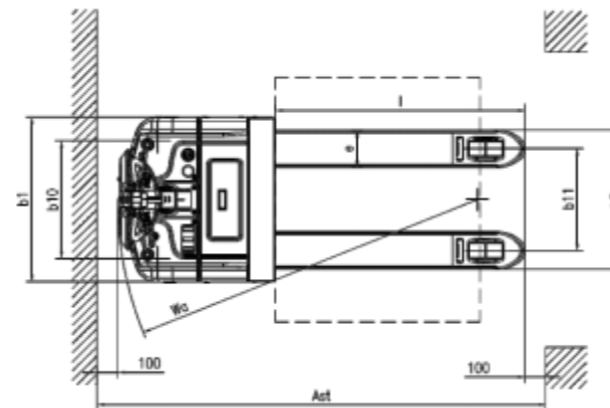
Product Features

1. The floating bracket is set in the middle of the drive system to ensure the stability of the vehicle operation, and the body is smooth and not tilted.
2. With break-electric brake function, the handle is loosened or pressed to the bottom, and the vehicle immediately turned off the brake.
3. All-standard standard electronic power steering system, helping the response very keens, the handle manipulation is comfortable.
4. Original imported AC controller provides systematic unparalleled flexibility and accurate speed control.
5. Configure a boost cylinder, fast speed, large power, and low energy consumption, prevent the slippage when overloading.
6. Standard the battery side pull configuration, replacing the battery more convenient and fast, facilitating continuous operation, greatly improving productivity.



全电动托盘搬运车参数 Technical Data

特征 Characteristics						
1.01	型号	Model	SL20 GA	SL25 GA	SL30 GA	
1.02	驱动方式	Power unit	电动(Electric)			
1.03	操作方式	Operation	站驾式(Standing on)			
1.04	额定载重能力	Rated traction weight	Q (t)	2	2.5	3
1.05	载荷中心	Load centre	c (mm)	600		
1.06	前悬距	Axle centre to fork face	x (mm)	1039		
1.07	轴距	Wheel base	y (mm)	1560		
1.08	自重 (含电瓶)	Service weight with battery	kg	810	830	850
轮子、底盘 Wheels/Tyres						
2.01	轮胎类型	Wheels type	聚氨酯 (PU)			
2.02	驱动轮尺寸	Driving wheel size	Φ×w(mm)	Φ250×75		
2.03	承载轮尺寸	Bearing wheel size	Φ×w(mm)	Φ80×80		
2.04	平衡轮尺寸	Additional wheels (dimensions)	Φ×w(mm)	Φ115×55		
2.05	驱动轮, 平衡轮/承载轮数量 (x=驱动轮)	Wheels, number front/rear (x = driven)	1x+2/4			
2.06	轮距, 驱动端	Track width	b10 (mm)	580		
2.07	轮距, 承载端	Track width	b11 (mm)	355/500		
尺寸 Dimensions						
3.01	提升高度	Lift	h3 (mm)	200		
3.02	操作位置手柄杆最小/最大高度	Overall height(With handle	h4 (mm)	1150/1455		
3.03	货叉最低高度	lowered length	h14 (mm)	85		
3.04	整车长度	Overall length	h13 (mm)	1910(1985)		
3.05	车体长度	Length to fork face	l1 (mm)	756		
3.06	整车宽度	Overall width	l2 (mm)	808		
3.07	货叉尺寸	Fork dimensions	s/e/l (mm)	50/185/1150 (1220)		
3.08	货叉外宽	Width of forks	b5 (mm)	540/685		
3.09	轴距中心处离地间隙	Min .Ground clearance	m2 (mm)	25		
3.10	通道宽度:1000x1200托盘(1200跨货叉放置)	Aisle width with pallet 1000 x 1200 across forks	Ast (mm)	2180		
3.11	通道宽度:800x1200托盘(1200沿货叉放置)	Aisle width with pallet 800 x 1200 along forks	Ast (mm)	2380		
3.12	转弯半径	Min .Turning radius	Wa (mm)	1746		
性能 Performance						
4.01	行走速度, 满载/空载	Travel speed, laden/unladen	(km/h)	5.2/5.5		
4.02	提升速度, 满载/空载	Lifting speed, with/without load	(mm/s)	22/28	18/20	15/18
4.03	下降速度, 满载/空载	Lowering speed, with/without load	(mm/s)	30/20	32/18	35/16
4.04	最大爬坡度, 满载/空载	Maximum climbing ability, with/without load	(%)	6/8		
4.05	制动类型	Service brake	电磁制动(Electromagnetic)			
电机 Drive						
5.01	驱动电机功率	Drive motor, 60 minute rating	(kW)	1.5	2.5	3.0
5.02	起升电机功率	Lift motor rating at S3 15%	(kW)	0.8	1.5	1.5
5.03	蓄电池电压/容量	Battery voltage/rated capacity	(V/Ah)	24/210		
5.04	电池重量 (± 5%)	Battery weight (± 5%)	(kg)	190		
其它 Other						
6.01	驱动控制类型	Type of drive control	交流速度控制(AC)			
6.02	噪音水平	Noise level at operator 's ear	(dB(A))	≤70		
6.03	转向类型	Type of steering	电子助力(Electric)			



全电动托盘搬运车 (经典款)

Electric pallet truck (Standing on)

产品特性

1. 进口交流控制器, 具有无级调速及反接制动功能。
2. 原装进口控制器具备过压、低压、过流、高温、短路等多种保护功能。
3. 控制手柄上安装紧急反向开关, 当车辆后退失控时, 能防止操作者的身体受到挤压伤害。
4. 操作手柄左右两侧均有上升下降按钮, 所有的操作功能均集成在手柄上, 非常方便操作。
5. 踏板脚感舒适, 下装减震器, 能迅速吸收车辆运行时产生的震动, 缓解路面带来的冲击。折叠式护臂收放自如, 保护安全的同时提高驾驶的舒适性。
6. 控制器带自我诊断功能, 手持单元与控制器联接后可显示故障代码, 迅速精准排查故障。

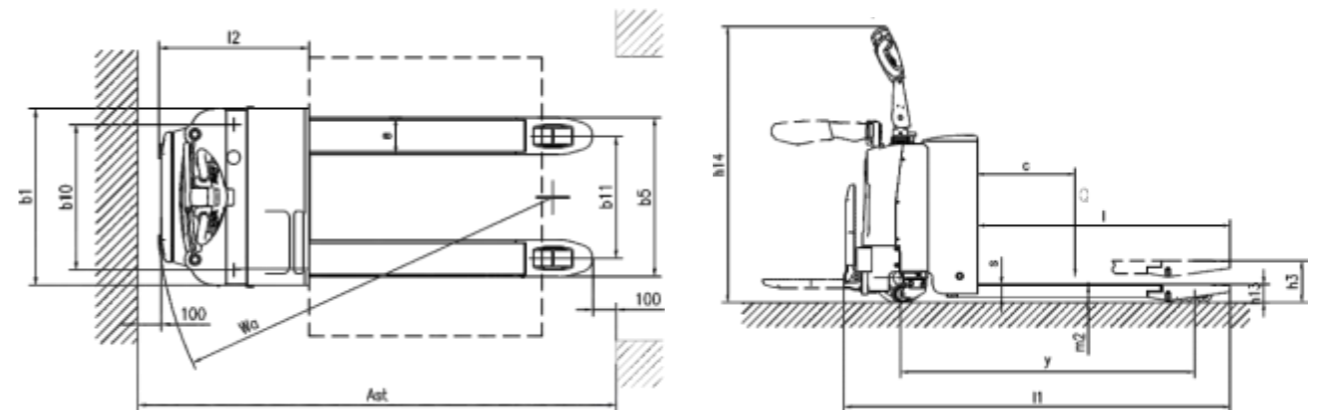
Product Features

1. Imported AC controller, with stepless speed regulation and reverse braking function.
2. Original imported controller with over voltage, low voltage, over current, high temperature, short circuit and other protection functions.
3. An emergency reverse switch is installed on the control handle to prevent the body of the operator from being crushed when the vehicle recovers out of contro.
4. There are up and down buttons on the left and right sides of the handle. All operation functions are integrated on the handle, which is very convenient for operation.
5. The pedal foot is comfortable and equipped with shock absorber, which can quickly absorb the vibration generated when the vehicle is running and relieve the impact brought by the road surface. Folding arm guard can be put back and forth freely, which can protect safety and improve driving comfort.
6. The controller has self-diagnosis function, the fault code can be displayed after the hand-held unit is connected with the controller, and the fault can be checked quickly and accurately.



全电动托盘搬运车 (经典款) 参数 Technical Data

特征 Characteristics			
1.01	型号	Model	SI20
1.02	驱动方式	Power unit	电动(Electric)
1.03	操作方式	Operation	站驾式(Standing on)
1.04	额定载重能力	Rated traction weight	Q (t) 2
1.05	载荷中心距	Load centre	c (mm) 600
1.06	前悬距	Axle centre to fork face	x (mm) 1050
1.07	轴距	Wheel base	y (mm) 1423
1.08	自重 (含电瓶)	Service weight with battery	kg 500
轮子、底盘 Wheels/Tyres			
2.01	轮胎类型	Wheels type	聚氨酯 (PU)
2.02	驱动轮尺寸	Driving wheel size	Φ×w(mm) φ250×80
2.03	承载轮尺寸	Bearing wheel size	Φ×w(mm) φ80×70
2.04	平衡轮尺寸	additional wheels (dimensions)	Φ×w(mm) φ100×40
2.05	驱动轮, 平衡轮/承载轮数量 (x=驱动轮)	Wheels, number front/rear (x = driven)	1, 2/4
2.06	轮距, 驱动端	Track width	b10 (mm) 627
2.07	轮距, 承载端	Track width	b11 (mm) 525
尺寸 Dimensions			
3.01	提升高度	Lift	h3 (mm) 200
3.02	站台面高度	Height of seat/stand-on platform	h7 (mm) 132
3.03	操作位置手柄杆最小/最大高度	Overall height(With handle)	h14 (mm) 970/1315
3.04	货叉最低高度	Minimum height of cargo fork	h13 (mm) 85
3.05	整车长度	Overall length	l1 (mm) 1860
3.06	车体长度	Length to fork face	l2 (mm) 648
3.07	整车宽度	Overall width	b1/ b2 (mm) 776
3.08	货叉尺寸	Fork dimensions	s/e/l (mm) 1150 (1220) /160/60
3.09	货叉外宽	Width of forks	b5 (mm) 540/685
3.10	轴距中心处离地间隙	Min .Ground clearance	m2 (mm) 16
3.11	道宽度:1000×1200托盘(1200跨货叉放置)	Aisle width with pallet 1000 x 1200 across forks	Ast (mm) 2071
3.12	通道宽度:800×1200托盘(1200沿货叉放置)	Aisle width with pallet 800 x 1200 along forks	Ast (mm) 2300
3.13	转弯半径	Min .Turning radius	Wa (mm) 1760
性能 Performance			
4.01	行走速度, 满载/空载	Travel speed, laden/unladen	(km/h) 5.2/5.0
4.02	提升速度, 满载/空载	Lifting speed, with/without load	(mm/s) 35/45
4.03	下降速度, 满载/空载	Lowering speed, with/without load	(mm/s) 65/58
4.04	最大爬坡度, 满载/空载	Maximum climbing ability, with/without load	(%) 6/8
4.05	制动类型	Service brake	电磁制动(Electromagnetic)
电机 Drive			
5.01	驱动电机功率	Drive motor, 60 minute rating	(kW) 1.5
5.02	起升电机功率	Lift motor rating at S3 15%	(kW) 0.8
5.03	蓄电池电压/容量	Battery voltage/rated capacity	(V/Ah) 24/200
5.04	电池重量(±5%)	Battery weight (± 5%)	(kg) 180
其它 Other			
6.01	驱动控制类型	Type of drive control	交流速度控制(AC)
6.02	噪音水平	Noise level at operator 's ear	(dB(A)) ≤70



全电动搬运车 (座架式)

Electric pallet truck (Seated on)

产品特性

1. 高效的电池管理，通过侧面电瓶更换可快速更换电瓶；
2. 封闭半包围的车架，可有效的保护驾驶员的身体；
3. 横向的驾驶位置，提供最佳的全方位视野；
4. 软垫靠背使搬运货物时舒适而无疲劳感；
5. 驱动标配电子助力转向系统，转向更加轻松、操控更加灵活精准，降低操作者的劳动强度；
6. 脚踏式安全开关，防止行走误操作；
7. 提供两种操作模式：站立操作时，装有减震垫的踏板可大幅减少冲击；坐下时软背垫提供更好的支撑。

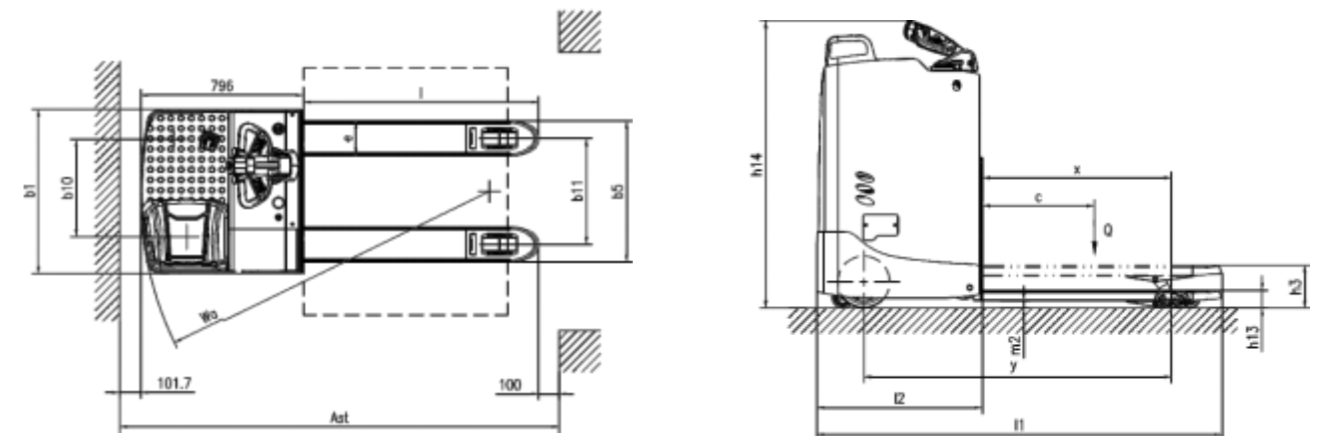
Product Features

1. Efficient battery management, quick battery replacement through side battery replacement;
2. Closed semi - enclosed frame can effectively protect the driver's body;
3. The lateral driving position provides the best all-round view;
4. The upholstered backrest makes handling goods comfortable and without fatigue;
5. Drive standard electronic power steering system, steering more easily, more flexible and accurate control, reduce the labor intensity of the operator;
6. Pedal-mounted safety switch prevents misoperation when walking;
7. Two operation modes are provided: when standing up, the pedal equipped with shock absorbing pad can greatly reduce the impact; Soft back pads provide better support when sitting down.



全电动搬运车参数 Technical Data

特征 Characteristics			
1.01	型号	Model	SL20ZD
1.02	驱动方式	Power unit	电动(electric)
1.03	操作方式	Operation	座驾式 (Seated on)
1.04	额定载重能力	Rated traction weight	Q (t) 2000
1.05	载荷中心距	Load centre	c (mm) 600
1.06	前悬距	Axle centre to fork face	x (mm) 910
1.07	轴距	Wheel base	y (mm) 1480
1.08	自重 (含电瓶)	Service weight with battery	kg 810
轮子、底盘 Wheels/Tyres			
2.01	轮胎类型	Wheels type	聚氨酯 (polyurethane)
2.02	驱动轮尺寸	Driving wheel size	Φ×w(mm) Φ250×75
2.03	承载轮尺寸	Bearing wheel size	Φ×w(mm) Φ80×70
2.04	平衡轮尺寸	Additional wheels (dimensions)	Φ×w(mm) Φ100×40
2.05	驱动轮, 平衡轮/承载轮数量 (x=驱动轮)	Wheels, number front/rear (x = driven)	1, 1/4
2.06	轮距, 驱动端	Track width	b10 (mm) 475
2.07	轮距, 承载端	Track width	b11 (mm) 515/370
尺寸 Dimensions			
3.01	提升高度	Lift	h3 (mm) 120
3.02	操作位置手柄高度	Overall height(With handle)	h14 (mm) 1063
3.03	货叉最低高度	lowered length	h13 (mm) 86
3.04	整车长度	Overall length	l1 (mm) 1946
3.05	车体长度	Length to fork face	l2 (mm) 796
3.06	整车宽度	Overall width	b1/ b2 (mm) 800
3.07	货叉尺寸	Fork dimensions	s/e/l (mm) 50/170/1150
3.08	货叉外宽	Width of forks	b5 (mm) 685/540
3.09	轴距中心处离地间隙	Min .Ground clearance	m2 (mm) 36
3.10	通道宽度:1000x1200托盘(1200跨货叉放置)	Aisle width with pallet 1000 x 1200 across forks	Ast (mm) 2150
3.11	通道宽度:800x1200托盘(1200沿货叉放置)	Aisle width with pallet 800 x 1200 along forks	Ast (mm) 2200
3.12	转弯半径	Min .Turning radius	Wa (mm) 1755
性能 Performance			
4.01	行走速度, 满载/空载	Travel speed, laden/unladen	(km/h) 5.2/5.5
4.02	提升速度, 满载/空载	Lifting speed, with/without load	(mm/s) 35/40
4.03	下降速度, 满载/空载	Lowering speed, with/without load	(mm/s) 50/25
4.04	最大爬坡度, 满载/空载	Maximum climbing ability, with/without load	(%) 6/8
4.05	制动类型	Service brake	电磁制动(Electromagnetic)
电机 Drive			
5.01	驱动电机功率	Drive motor, 60 minute rating	(kW) 1.5
5.02	起升电机功率	Lift motor rating at S3 15%	(kW) 0.8
5.03	蓄电池电压/容量	Battery voltage/rated capacity	(V/Ah) 24/210
5.04	电池重量(±5%)	Battery weight (± 5%)	(kg) 190
其它 Other			
6.01	驱动控制类型	Type of drive control	交流速度控制(AC)
6.02	噪音水平	Noise level at operator 's ear	(dB(A)) ≤75



全电动托盘搬运车 (G系列E款)

Electric pallet truck (Pedestrian)

产品特性

1. 进口交流控制器，德国ZF立式齿轮箱；
2. 强劲有效的交流驱动系统提供卓越的加速性能，提高作业效率，节省能源；
3. 独有的长手柄操作，轻松灵活；
4. 两侧的平衡轮保证了车辆更高的稳定性并且防止地面受损；
5. 电瓶箱盖板及面罩设置凹槽，可放置工具、水杯等物品，更为人性化。

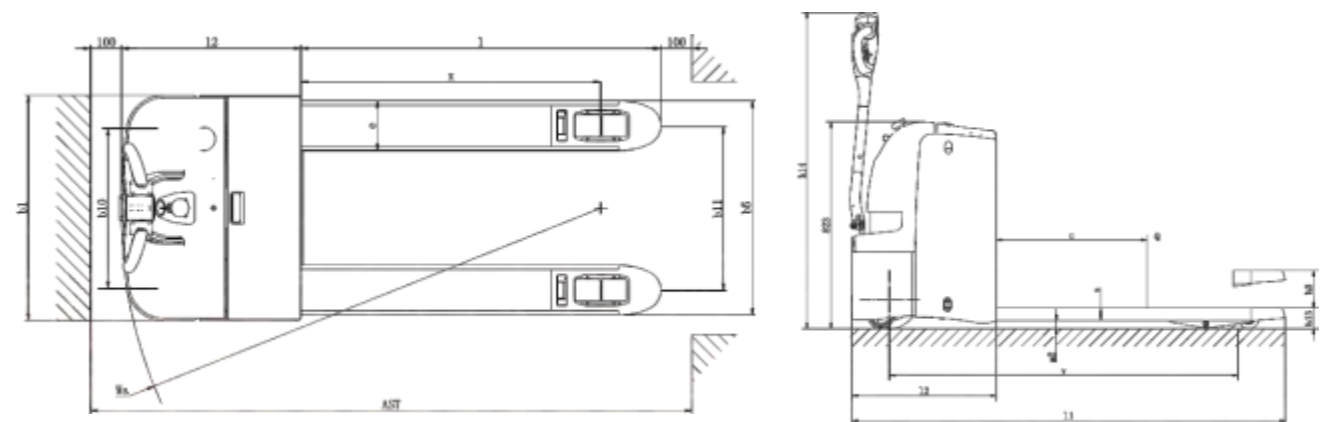
Product Features

1. Imported AC controller, Germany ZF vertical gearbox;
2. Strong effective AC drive systems offer superior acceleration performance, improve job efficiency, and save energy;
3. Unique long handle operation, easy and flexible;
4. The balance wheel on both sides ensures higher stability of the vehicle and prevents the ground from being damaged;
5. The battery case cover and mask provide grooves, placed tools, water cups and other items, more human.



全电动托盘搬运车 (G系列E款) 参数 Technical Data

特征 Characteristics			
1.01	型号	Model	SL20GE
1.02	驱动方式	Power unit	电动(Electric)
1.03	操作方式	Operation	步行式(Pedestrian)
1.04	额定载重能力	Rated traction weight	Q (t) 2.0
1.05	载荷中心距	Load centre	c (mm) 600
1.06	前悬距	Axle centre to fork face	x (mm) 962
1.07	轴距	Wheel base	y (mm) 1388
1.08	自重 (含电瓶)	Service weight with battery	kg 520
轮子、底盘 Wheels/Tyres			
2.01	轮胎类型	Wheels type	聚氨酯 (PU)
2.02	驱动轮尺寸	Driving wheel size	Φ×w(mm) Φ230×75
2.03	承载轮尺寸	Bearing wheel size	Φ×w(mm) Φ80×70
2.04	平衡轮尺寸	additional wheels (dimensions)	Φ×w(mm) Φ100×40
2.05	驱动轮, 平衡轮/承载轮数量 (x=驱动轮)	Wheels, number front/rear (x = driven)	1x+2/4
2.06	轮距, 承载端	Track width	b11 (mm) 390/525
尺寸 Dimensions			
3.01	提升高度	Lift	h3 (mm) 200
3.02	操作位置手柄杆最小/最大高度	Overall height(With handle)	h14 (mm) 825/1278
3.03	货叉最低高度	Minimum height of cargo fork	h13 (mm) 85
3.04	整车长度	Overall length	l1 (mm) 1742
3.05	车体长度	Length to fork face	l2 (mm) 592
3.06	整车宽度	Overall width	b1/ b2 (mm) 700
3.07	货叉尺寸	Fork dimensions	s/e/l (mm) 50/160/1150
3.08	货叉外宽	Width of forks	b5 (mm) 550/685
3.09	轴距中心处离地间隙	Min .Ground clearance	m2 (mm) 35
3.10	通道宽度:1000×1200托盘(1200跨货叉放置)	Aisle width with pallet 1000 x 1200 across forks	Ast (mm) 1944
3.11	通道宽度:800×1200托盘(1200沿货叉放置)	Aisle width with pallet 800 x 1200 along forks	Ast (mm) 1994
3.12	转弯半径	Min .Turning radius	Wa (mm) 1556
性能 Performance			
4.01	行走速度, 满载/空载	Travel speed, laden/unladen	(km/h) 4.2/4.5
4.02	提升速度, 满载/空载	Lifting speed, with/without load	(mm/s) 21/27
4.03	下降速度, 满载/空载	Lowering speed, with/without load	(mm/s) 38/38
4.04	最大爬坡度, 满载/空载	Maximum climbing ability, with/without load	(%) 8/15
4.05	制动类型	Service brake	电磁制动(Electromagnetic)
电机 Drive			
5.01	驱动电机功率	Drive motor, 60 minute rating	(kW) 1.3
5.02	起升电机功率	Lift motor rating at S3 15%	(kW) 0.8
5.03	蓄电池电压/容量	Battery voltage/rated capacity	(V/Ah) 24/210
5.04	电池重量(±5%)	Battery weight (± 5%)	(kg) 195
其它 Other			
6.01	驱动控制类型	Type of drive control	交流速度控制(AC)
6.02	噪音水平	Noise level at operator 's ear	(dB(A)) ≤70
6.03	转向类型	Type of steering	机械转向(Mechanical)



全电动托盘搬运车 (G系列H款) Electric pallet truck (Pedestrian)

产品特性

1. 整车简洁，灵巧，稳定，易操作。结构紧凑，转弯半径小。低噪音，高性能。
2. 两侧的辅助轮增加了行车稳定性，标配起升电限位功能，当货叉升至顶部时，系统自动切断上升电源，平稳停车。
3. 操作手柄为步行式车辆加长设计，符合人体工程学原理，操作舒适。
4. 车身箱体前面板设开口装置，可以迅速检查油缸，油管等故障。

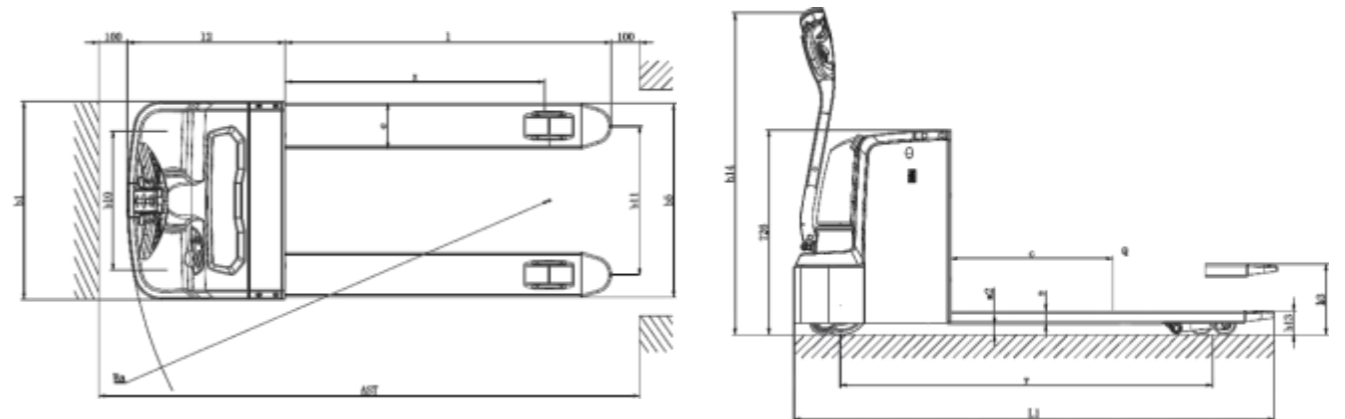
Product Features

1. The vehicle is simple, agile, stable and easy to operate. Compact structure, small turning radius. Low noise, high performance.
2. The auxiliary wheels on both sides increase the driving stability and are standard equipped with the function of lifting power limit. When the forks rise to the top, the system will automatically cut off the lifting power and stop the car smoothly.
3. The operation handle is lengthened design for walking vehicle, which conforms to ergonomic principle and is comfortable to operate.
4. The front panel of the body box is equipped with opening device, which can quickly check the faults of the oil cylinder and oil pipe.



全电动托盘搬运车参数 Technical Data

特征 Characteristics				
1.01	型号	Model	SL20GH	SL20GHS
1.02	驱动方式	Power unit	电动(Electric)	
1.03	操作方式	Operation	步行式(Pedestrian)	
1.04	额定载荷能力	Rated traction weight	Q (t)	2
1.05	载荷中心距	Load centre	c (mm)	600
1.06	前悬距	Axle centre to fork face	x (mm)	931
1.07	轴距	Wheel base	y (mm)	1324
1.08	自重 (含电瓶)	Service weight with battery	kg	333
轮子、底盘 Wheels/Tyres				
2.01	轮胎类型	Wheels type	聚氨酯(PU)	
2.02	驱动轮尺寸	Driving wheel size	Φ×w(mm)	Φ210×70
2.03	承载轮尺寸	Bearing wheel size	Φ×w(mm)	Φ80×70
2.04	平衡轮尺寸	Additional wheels (dimensions)	Φ×w(mm)	Φ100×40
2.05	驱动轮, 平衡轮/承载轮数量 (x=驱动轮)	Wheels, number front/rear (x = driven)	1x+2/4	
2.06	轮距, 承载端	Track width	b11 (mm)	380/525
尺寸 Dimensions				
3.01	提升高度	Lift	h3 (mm)	200
3.02	操作位置手柄杆最小/最大高度	Overall height(With handle)	h14 (mm)	730/1165
3.03	货叉最低高度	Fork Height, Lowered	h13 (mm)	85
3.04	整车长度	Overall length	l1 (mm)	1708
3.05	车体长度	Length to fork face	l2 (mm)	558
3.06	整车宽度	Overall width	b1/ b2 (mm)	700
3.07	货叉尺寸	Fork dimensions	s/e/l (mm)	50/160/1150
3.08	货叉外宽	Width of forks	b5 (mm)	540/685
3.09	轴距中心处离地间隙	Min .Ground clearance	m2 (mm)	35
3.10	通道宽度:1000x1200托盘(1200跨货叉放置)	Aisle width with pallet 1000 x 1200 across forks	Ast (mm)	1909
3.11	通道宽度:800x1200托盘(1200沿货叉放置)	Aisle width with pallet 800 x 1200 along forks	Ast (mm)	1959
3.12	转弯半径	Min .Turning radius	Wa (mm)	1490
性能 Performance				
4.01	行走速度, 满载/空载	Travel speed, laden/unladen	(km/h)	4.2/4.5 5.2/5.5
4.02	提升速度, 满载/空载	Lifting speed, with/without load	(mm/s)	20/26
4.03	下降速度, 满载/空载	Lowering speed, with/without load	(mm/s)	33/21
4.04	最大爬坡度, 满载/空载	Maximum climbing ability, with/without load	(%)	3/10 8/15
4.05	制动类型	Service brake	电磁制动(Electromagnetic)	
电机 Drive				
5.01	驱动电机功率	Drive motor, 60 minute rating	(kW)	0.75
5.02	起升电机功率	Lift motor rating at S3 15%	(kW)	0.8
5.03	蓄电池电压/容量	Battery voltage/rated capacity	(V/Ah)	2×12/100
5.04	电池重量(±5%)	Battery weight (±5%)	(kg)	54
其它 Other				
6.01	驱动控制类型	Type of drive control	直流速度控制(DC)	交流速度控制(AC)
6.02	噪音水平	Noise level at operator 's ear	(dB(A))	≤70
6.03	转向类型	Type of steering	机械转向(Mechanical)	



全电动托盘搬运车(小铁牛) Electric pallet truck (Pedestrian)

产品特性

- 1.转弯半径小，车辆重心低，转向稳定性极佳。
- 2.操作手柄配置优质的气压式弹簧，松开手柄，自动缓慢复位，经久耐用。
- 3.钥匙开关，电量表，上升下降按钮，龟速开关都集成在操作手柄上，操作更简便。
- 4.德国原装进口防水微动开关,适应寒冷、潮湿、粉尘等各种恶劣环境。
- 5.永磁电机驱动系统，体积小、质量轻、损耗小、效率高。
- 6.坚固的金属防护罩有效保护驱动系统，并贴心保护操作者的脚免受伤害。
- 7.无需加大蓄电池箱容积，可选配同等体积的高密度大容量锂电池，续航时间提升一倍以上。

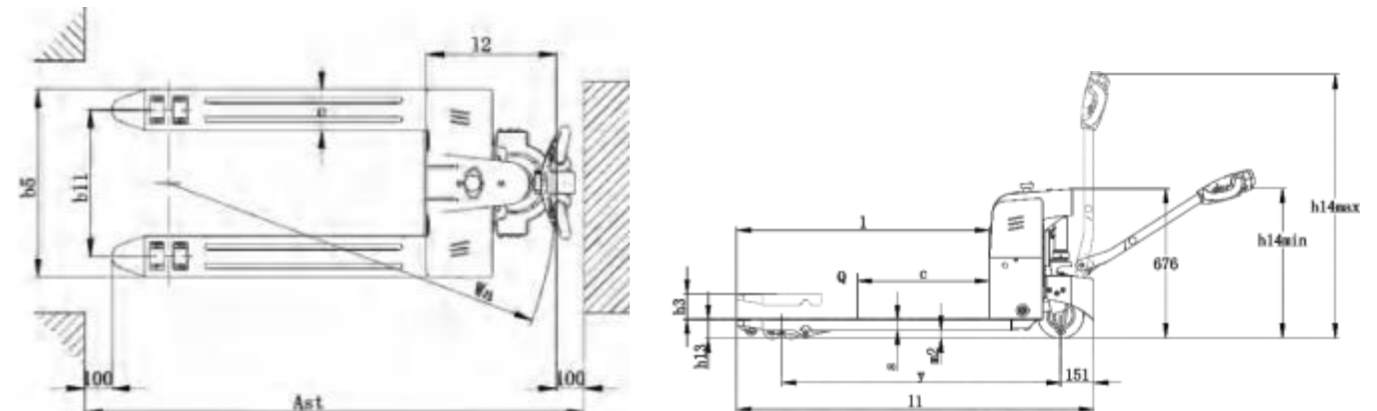
Product Features

- 1.Small the radius of the turn, low center of gravity, excellent steering stability.
- 2.Operating handle Configuring high quality air pressure springs, loosen the handle, automatically resets, and durable.
- 3.Key switch, electric meter, up and down button, turtle speed switch are integrated in the operation handle, easy to operate
- 4.Germany imported waterproof micro-power switch, adapt to cold, moist, dust, etc.
- 5.Permanent magnet motor drive system, small size, light quality, small loss, high efficiency.
- 6.Rugged metal protective cover effectively protects the drive system, and intimately protects the operator's foot from harm.
- 7.There is no need to increase the battery tank volume, optionally, the equivalent volume of high-density large-capacity lithium battery, and the battery life is doubled.



全电动托盘搬运车(小铁牛)参数 Technical Data

特征 Characteristics				
1.01	型号	Model	SL15	SL13L
1.02	驱动方式	Power unit	电动(Electric)	
1.03	操作方式	Operation	步行式(Pedestrian)	
1.04	额定载重能力	Rated traction weight	Q (t)	1.5
1.05	载荷中心距	Load centre	c (mm)	600
1.06	前悬距	Axle centre to fork face	x (mm)	944
1.07	轴距	Wheel base	y (mm)	1272
1.08	自重(含电瓶)	Service weight with battery	kg	190/230 185/225
轮子、底盘 Wheels/Tyres				
2.01	轮胎类型	Wheels type	聚氨酯 (PU)	
2.02	驱动轮尺寸	Driving wheel size	Φ×w(mm)	Φ210×70
2.03	承载轮尺寸	Bearing wheel size	Φ×w(mm)	Φ80×60
2.04	车轮数量, 前轮/后轮 (x=驱动轮)	Wheels, number front/rear (x = driven)	4/1x	
2.05	轮距, 承载端	Track width	b11 (mm)	410/535
尺寸 Dimensions				
3.01	提升高度	Lift	h3 (mm)	200 180
3.02	操作位置手柄杆最小/最大高度	Overall height(With handle)	h14 (mm)	790/1210
3.03	货叉最低高度	lowered length	h13 (mm)	85 65
3.04	整车长度	Overall length	l1 (mm)	1624
3.05	车体长度	Length to fork face	l2 (mm)	474
3.06	整车宽度	Overall width	b1/ b2 (mm)	560/685
3.07	货叉尺寸	Fork dimensions	s/e/l (mm)	50/150/1150
3.08	货叉外宽	Width of forks	b5 (mm)	560/685
3.09	轴距中心处离地间隙	Min .Ground clearance	m2 (mm)	35 15
3.10	通道宽度:1000x1200托盘(1200跨货叉放置)	Aisle width with pallet 1000 x 1200 across forks	Ast (mm)	1840
3.11	通道宽度:800x1200托盘(1200沿货叉放置)	Aisle width with pallet 800 x 1200 along forks	Ast (mm)	1890
3.12	转弯半径	Min .Turning radius	Wa (mm)	1434
性能 Performance				
4.01	行走速度, 满载/空载	Travel speed, laden/unladen	(km/h)	4.2/4.5
4.02	提升速度, 满载/空载	Lifting speed, with/without load	(mm/s)	27/33
4.03	下降速度, 满载/空载	Lowering speed, with/without load	(mm/s)	33/23
4.04	最大爬坡度, 满载/空载	Maximum climbing ability, with/without load	(%)	6/10
4.05	制动类型	Service brake	电磁制动(Electromagnetic)	
电机 Drive				
5.01	驱动电机功率	Drive motor, 60 minute rating	(kW)	0.75
5.02	起升电机功率	Lift motor rating at S3 15%	(kW)	0.8
5.03	蓄电池电压/容量	Battery voltage/rated capacity	(V/Ah)	2×12/75
5.04	电池重量(±5%)	Battery weight (±5%)	(kg)	40
其它 Other				
6.01	驱动控制类型	Type of drive control	直流速度控制(DC)	
6.02	噪音水平	Noise level at operator 's ear	(dB(A))	≤70
6.03	转向类型	Type of steering	机械转向(Mechanical)	



全电动托盘搬运车(小铁牛三代) Electric pallet truck (Pedestrian)

产品特性

1. 整车尺寸小巧,转弯半径小能够在狭小的空间场合进行搬运工作。
2. 附带的进入与退出滚子保证车辆可轻松进出双面托盘。
3. 坚固的金属外罩保护了电机和车轮, 同时也可可靠的保护了操作者的脚部提高安全性。
4. 内置充电器,为客户使用提供便利。
5. 采用多功能进口控制系统, 使操作和维修更加简单方便, 提高整车的稳定性。
6. 改善线路功能布局,降低故障率。

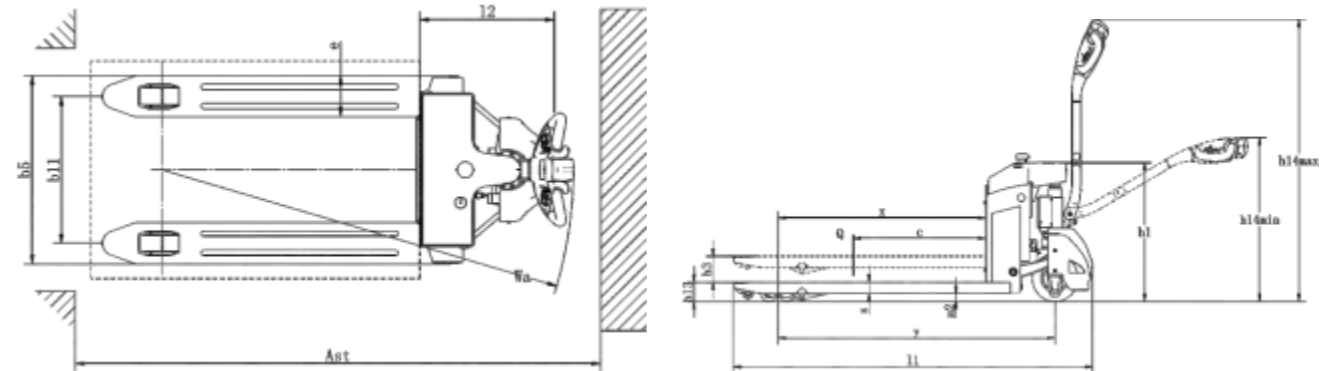
Product Features

1. The whole vehicle is small, and the turning radius can be handled in a small space.
2. The included entry and exit roller guarantee that the vehicle can easily enter the double-sided tray.
3. Rugged metal cover protects the motor and wheels, but also reliably protects the operator's foot to improve safety.
4. Built-in charger provides convenience to customers.
5. Adopt multi-function import control systems, make operational and maintenance simple and convenient, improve the stability of the vehicle.
6. Improve the line function layout and reduce the fault rate.



全电动托盘搬运车(小铁牛三代)参数 Technical Data

特征 Characteristics			
1.01	型号	Model	SL15 GI
1.02	驱动方式	Power unit	电动(Electric)
1.03	操作方式	Operation	步行式(Pedestrian)
1.04	额定载荷能力	Rated traction weight	Q (t) 1.5
1.05	载荷中心	Load centre	c (mm) 600
1.06	前悬距	Axle centre to fork face	x (mm) 944
1.07	轴距	Wheel base	y (mm) 1262
1.08	自重(含电瓶)	Service weight with battery	kg 193/200
轮子、底盘 Wheels/Tyres			
2.01	轮胎类型	Wheels type	聚氨酯 (PU)
2.02	驱动轮尺寸	Driving wheel size	Φ×w(mm) Φ210×70
2.03	承载轮尺寸	Bearing wheel size	Φ×w(mm) Φ80×60
2.04	车轮数量, 前轮/后轮 (x=驱动轮)	Wheels, number front/rear (x = driven)	4/1x
2.05	轮距, 承载端	Track width	b11 (mm) 410/535
尺寸 Dimensions			
3.01	提升高度	Lift	h3 (mm) 200
3.02	操作位置手柄杆最小/最大高度	Overall height(With handle)	h14 (mm) 612/1195
3.03	货叉最低高度	Lowered length	h13 (mm) 85
3.04	整车长度	Overall length	l1 (mm) 1628
3.05	车体长度	Length to fork face	l2 (mm) 478
3.06	整车宽度	Overall width	b1/ b2 (mm) 560/685
3.07	货叉尺寸	Fork dimensions	s/e/l (mm) 50/150/1150
3.08	货叉外宽	Width of forks	b5 (mm) 560/685
3.09	轴距中心处离地间隙	Min .Ground clearance	m2 (mm) 35
3.10	通道宽度:1000x1200托盘(1200跨货叉放置)	Aisle width with pallet 1000 x 1200 across forks	Ast (mm) 1831
3.11	通道宽度:800x1200托盘(1200沿货叉放置)	Aisle width with pallet 800 x 1200 along forks	Ast (mm) 1881
3.12	转弯半径	Min .Turning radius	Wa (mm) 1425
性能 Performance			
4.01	行走速度, 满载/空载	Travel speed, laden/unladen	(km/h) 4.2/4.5
4.02	提升速度, 满载/空载	Lifting speed, with/without load	(mm/s) 22/25
4.03	下降速度, 满载/空载	Lowering speed, with/without load	(mm/s) 38/28
4.04	最大爬坡度, 满载/空载	Maximum climbing ability, with/without load	(%) 6/10
4.05	制动类型	Service brake	电磁制动(Electromagnetic)
电机 Drive			
5.01	驱动电机功率	Drive motor, 60 minute rating	(kW) 0.75
5.02	起升电机功率	Lift motor rating at S3 15%	(kW) 0.8
5.03	蓄电池电压/容量	Battery voltage/rated capacity	(V/Ah) 2×12/75
5.04	电池重量(± 5%)	Battery weight (± 5%)	(kg) 40
其它 Other			
6.01	驱动控制类型	Type of drive control	直流速度控制(DC)
6.02	噪音水平	Noise level at operator 's ear	(dB(A)) ≤70
6.03	转向类型	Type of steering	机械转向(Mechanical)



步行式电动搬运车 Electric pallet truck (Pedestrian)



产品特性

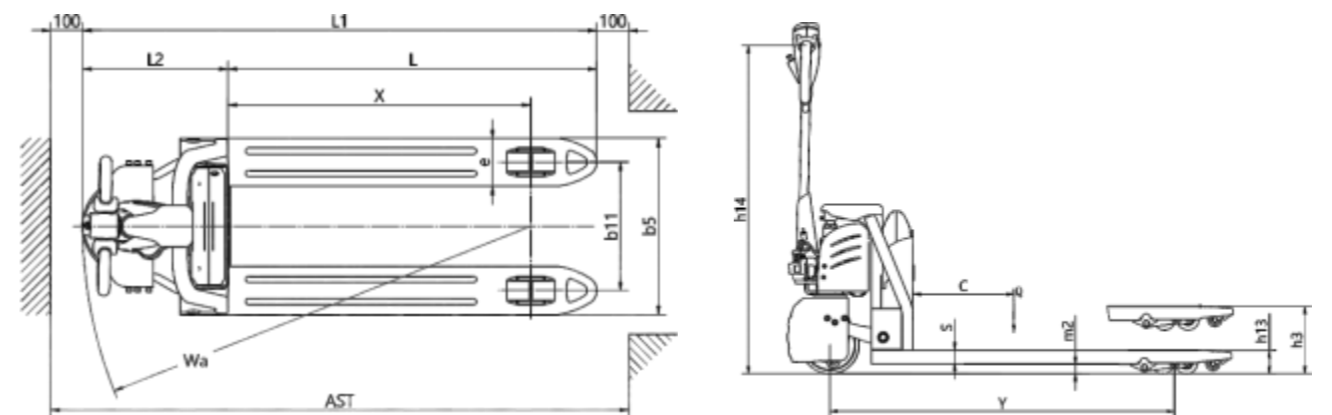
1. 整车简洁、灵巧、可靠、易操作。结构紧凑，转弯半径小。自重小，可在货运电梯内使用。低噪音、高性能；
2. 合理的结构设计，使整机在具有坚固的骨架结构的同时，保持较轻的自重。完全开放式的设计，方便用户保养和维护；
3. 整机采用开放式设计，拆卸、更换电池简单方便。当电池电量耗尽时，可快速更换另一组电池（选配），有效延长一倍的工作时间；
4. 后退防撞开关，行车制动采用电磁制动与电机制动双重保障，充分考虑了作业者行车安全；
5. 操作手柄的设计，电动起升功能，节省了操作者体力，手动下降功能，通过扳动拉手的角度来调节下降速度；
6. 坚固的金属外罩保护了电机和车轮，同时也可可靠的保护了操作者的脚部提高安全性。

Product Features

1. The vehicle is simple, dexterous, reliable and easy to operate. Compact structure, small turning radius. Small weight, can be used in freight elevator. Low noise, high performance;
2. Reasonable structure design, so that the machine has a strong skeleton structure, while maintaining a light weight. Fully open design, convenient for user maintenance and maintenance;
3. The whole machine adopts open design, easy to disassemble and replace the battery. When the battery is exhausted, another set of batteries can be quickly replaced (optional), effectively extending the working time of double;
4. Reverse collision-proof switch, dual guarantee of electromagnetic braking and motor braking is adopted for driving braking, which fully considers the operator's driving safety;
5. The design of operating handle, electric lifting function, saving the operator's physical strength, manual descending function, by pulling the handle Angle to adjust the descending speed;
6. The sturdy metal cover protects the motor and wheels, while also reliably protecting the operator's feet for increased safety.

步行式电动搬运车参数 Technical Data

特征 Characteristics				SL15L3	SL20L3
1.01	型号	Model		SL15L3	SL20L3
1.02	驱动方式	Power unit		电动(Electric)	
1.03	操作方式	Operation		步行式(Pedestrian)	
1.04	额定载荷能力	Rated traction weight	Q (t)	1.5	2.0
1.05	载荷中心	Load centre	c (mm)	600	
1.06	前悬距	Axle centre to fork face	x (mm)	944	
1.07	轴距	Wheel base	y (mm)	1243	
1.08	自重 (不含电池)	Service weight with battery	kg	142	
轮子、底盘 Wheels/Tyres					
2.01	轮胎类型	Wheels type		聚氨酯(PU)	
2.02	驱动轮尺寸	Driving wheel size	Φ×w(mm)	Φ210×70	
2.03	承载轮尺寸	Bearing wheel size	Φ×w(mm)	Φ80×60	
2.04	车轮数量, 前轮/后轮 (x=驱动轮)	Wheels, number front/rear (x = driven)		1x/4	
2.05	轮距, 承载端	Track width	b 11 (mm)	400/535	
尺寸 Dimensions					
3.01	提升高度	Lift	h3 (mm)	200	
3.02	操作位置手柄杆最小/最大高度	Overall height(With handle)	h 14 (mm)	740/1160	
3.03	货叉最低高度	lowered length	h 13 (mm)	85	
3.04	整车长度	Overall length	l1 (mm)	1603	
3.05	车体长度	Length to fork face	l2 (mm)	453	
3.06	整车宽度	Overall width	b1/ b2 (mm)	550/685	
3.07	货叉尺寸	Fork dimensions	s/e/l (mm)	50/150/1150	
3.08	货叉外宽	Width of forks	b5 (mm)	550/685	
3.09	轴距中心处离地间隙	Min. Ground clearance	m2 (mm)	35	
3.10	通道宽度:1000x1200托盘(1200跨货叉放置)	Aisle width with pallet 1000 x 1200 across forks	Ast (mm)	1804	
3.11	通道宽度:800x1200托盘(1200沿货叉放置)	Aisle width with pallet 800 x 1200 along forks	Ast (mm)	1854	
3.12	转弯半径	Min. Turning radius	Wa (mm)	1398	
性能 Performance					
4.01	行走速度, 满载/空载	Travel speed, laden/unladen		4.2/4.5	
4.02	最大爬坡度, 满载/空载	Maximum climbing ability, with/without load	(km/h)	5/10	
4.03	制动类型	Service brake	(%)	电磁制动(Electromagnetic)	
电机 Drive					
5.01	驱动电机功率	Drive motor, 60 minute rating	(kW)	0.75	
5.02	起升电机功率	Lift motor rating at S3 15%	(kW)	0.8	
5.03	蓄电池电压/容量	Battery voltage/rated capacity	(V/Ah)	24/20	24/30 24/40 24/60 48/20 48/30
5.04	电池重量(± 5%)	Battery weight (± 5%)	(kg)	6	8.2 10.2 13.2 10.2 13.2
其它 Other					
6.01	驱动控制类型	Type of drive control		直流速度控制(DC)	
6.02	噪音水平	Noise level at operator 's ear	(dB(A))	≤ 70	
6.03	转向类型	Type of steering		机械转向(Mechanical)	



电动搬运车

Electric pallet truck (Pedestrian)

产品特性

1. 整车尺寸小巧，转弯半径小能够在狭小的空间场合进行搬运工作。
2. 采用上卧式驱动轮结构，行驶通过性更好，更换轮子及电机更方便。
3. 坚固的金属外罩保护了电机和车轮，同时也可靠的保护了操作者的脚部提高安全性。
4. 后退防撞开关，行车制动采用电磁制动与电机制动双重保障，充分考虑了作业者行车安全。
5. 大容量免维护电池，内置充电器，为客户使用提供便利。
6. 整体手柄带密码锁，带CAN通讯，直立行走功能，剩余电量液晶显示。
7. 两侧的平衡轮保证了车辆更高的稳定性并且防止地面受损。

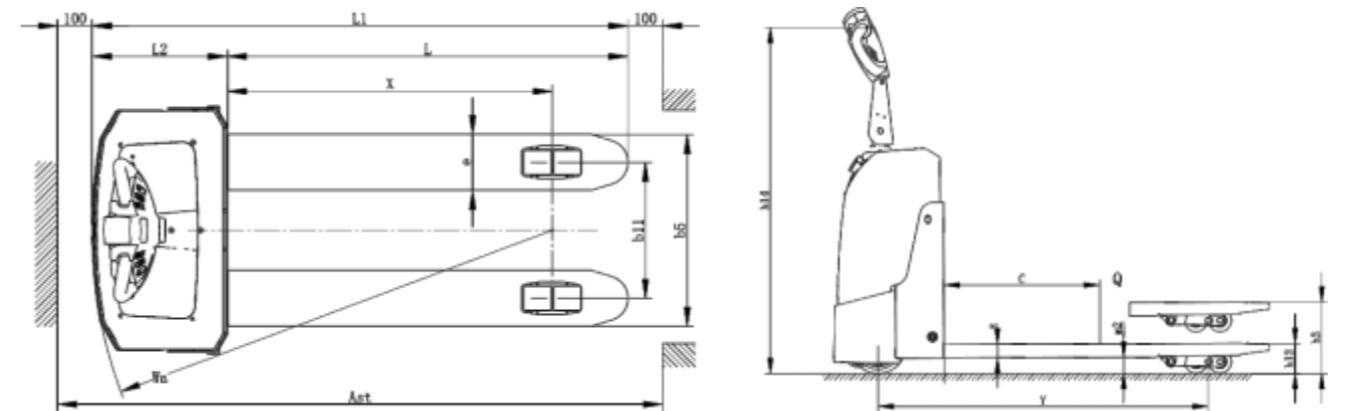
Product Features

1. The vehicle size is small, small turning radius can be carried out in a small space occasions.
2. Adopt upper horizontal driving wheel structure, better driving passability, more convenient to replace the wheel and motor.
3. The strong metal cover protects the motor and wheels, and also reliably protects the operator's feet to improve safety.
4. Rewind anti-collision switch, driving braking using electromagnetic braking and motor braking double guarantee, fully consider the operator's driving safety.
5. Large capacity maintenance-free battery, built-in charger, to provide convenience for customers.
6. Integral handle with password lock, CAN communication, walking upright function, remaining power LCD display.
7. Balance wheels on both sides ensure higher stability of the vehicle and prevent ground damage.



电动搬运车参数 Technical Data

特征 Characteristics				
1.01	型号	Model	SL15SS	SL20SS
1.02	驱动方式	Power unit	电动(Electric)	
1.03	操作方式	Operation	步行式(Pedestrian)	
1.04	额定载重能力	Rated traction weight	Q (t)	1.5
1.05	载重中心距	Load centre	c (mm)	600
1.06	前悬距	Axle centre to fork face	x (mm)	931
1.07	轴距	Wheel base	y (mm)	1163
1.08	自重 (含电瓶)	Service weight with battery	kg	245
轮子、底盘 Wheels/Tyres				
2.01	轮胎类型	Wheels type	聚氨酯(PU)	
2.02	驱动轮尺寸	Driving wheel size	Φ×w(mm)	Φ195×70
2.03	承载轮尺寸	Bearing wheel size	Φ×w(mm)	Φ80×70
2.04	平衡轮尺寸	Additional wheels (dimensions)	Φ×w(mm)	Φ100×40
2.05	驱动轮, 平衡轮/承载轮数量 (x=驱动轮)	Wheels, number front/rear (x = driven)	1x+2/4	
2.06	轮距, 承载端	Track width	b11 (mm)	390/525
尺寸 Dimensions				
3.01	提升高度	Lift	h3 (mm)	200
3.02	操作位置手柄杆最小/最大高度	Overall height(With handle)	h14 (mm)	865/1170
3.03	货叉最低高度	Fork Height, Lowered	h13 (mm)	85
3.04	整车长度	Overall length	l1 (mm)	1537
3.05	车体长度	Length to fork face	l2 (mm)	382
3.06	整车宽度	Overall width	b1/ b2 (mm)	710
3.07	货叉尺寸	Fork dimensions	s/e/l (mm)	50/160/1150
3.08	货叉外宽	Width of forks	b5 (mm)	550/685
3.09	轴距中心处离地间隙	Min .Ground clearance	m2 (mm)	35
3.10	通道宽度:1000x1200托盘(1200跨货叉放置)	Aisle width with pallet 1000 x 1200 across forks	Ast (mm)	1735
3.11	通道宽度:800x1200托盘(1200沿货叉放置)	Aisle width with pallet 800 x 1200 along forks	Ast (mm)	1785
3.12	转弯半径	Min .Turning radius	Wa (mm)	1315
性能 Performance				
4.01	行走速度, 满载/空载	Travel speed, laden/unladen	(km/h)	4.2/4.5
4.02	提升速度, 满载/空载	Lifting speed, with/without load	(mm/s)	35/38
4.03	下降速度, 满载/空载	Lowering speed, with/without load	(mm/s)	60/25
4.04	最大爬坡度, 满载/空载	Maximum climbing ability, with/without load	(%)	5/10
4.05	制动类型	Service brake	电磁制动(Electromagnetic)	
电机 Drive				
5.01	驱动电机功率	Drive motor, 60 minute rating	(kW)	0.75
5.02	起升电机功率	Lift motor rating at S3 15%	(kW)	0.8
5.03	蓄电池电压/容量	Battery voltage/rated capacity	(V/Ah)	2×12/75
5.04	电池重量(±5%)	Battery weight (± 5%)	(kg)	40
其它 Other				
6.01	驱动控制类型	Type of drive control	直流速度控制(DC)	
6.02	噪音水平	Noise level at operator 's ear	(dB(A))	≤70
6.03	转向类型	Type of steering	机械转向(Mechanical)	



电动托盘搬运车 Electric pallet truck (Pedestrian)



产品特性

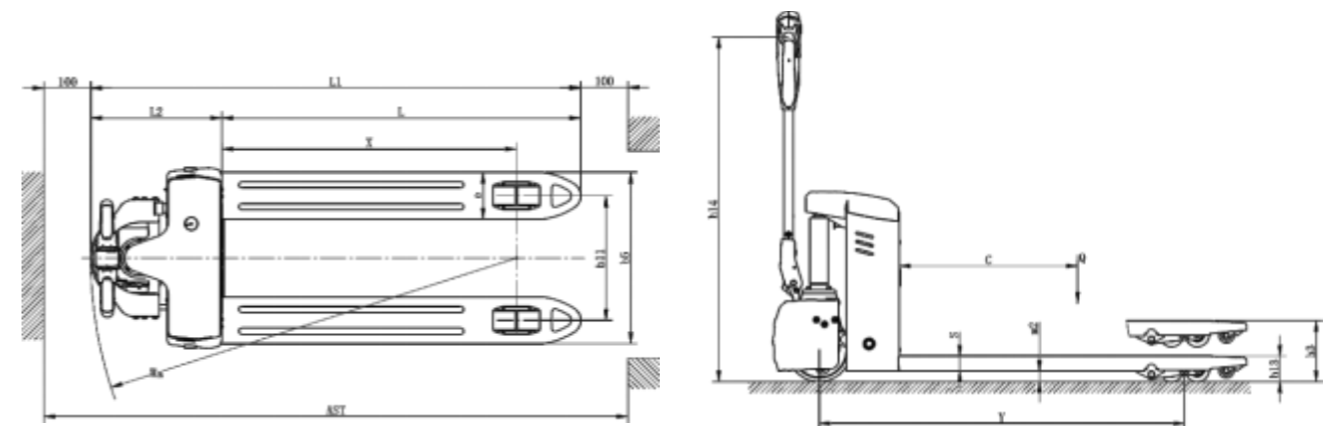
1. 整车尺寸小巧，转弯半径小能够在狭小的空间场合进行搬运工作。
2. 坚固的金属外罩保护了电机和车轮，同时也可靠的保护了操作者的脚部提高安全性。
3. 大容量免维护电池（可选配锂电池），内置充电器，为客户使用提供便利。
4. 整体手柄带密码锁，带CAN通讯，直立行走功能，剩余电量液晶显示。
5. 高效直流驱动单元动力强劲，配置电磁刹车系统，提高整车的安全性。

Product Features

1. The vehicle size is small, small turning radius can be carried out in a narrow space occasions.
2. The sturdy metal cover protects the motor and wheels while also reliably protecting the operator's feet for increased safety.
3. Large capacity maintenance-free battery (optional lithium battery), built-in charger, convenient for customers to use.
4. The whole handle with password lock, with CAN communication, upright walking function, remaining power LCD display.
5. Efficient DC drive unit with strong power, equipped with electromagnetic brake system, improve the safety of the vehicle.

电动托盘搬运车参数 Technical Data

特征 Characteristics					
1.01	型号	Model	SL15S6	SL15S6L	SL20S6L
1.02	驱动方式	Power unit	电动(Electric)		
1.03	操作方式	Operation	步行式(Pedestrian)		
1.04	额定载重能力	Rated traction weight	Q (t) 1.5		
1.05	载荷中心距	Load centre	c (mm)	600	
1.06	前悬距	Axle centre to fork face	x (mm)	944	
1.07	轴距	Wheel base	y (mm)	1210	
1.08	自重(含电瓶)	Service weight with battery	kg	140	140 148
轮子、底盘 Wheels/Tyres					
2.01	轮胎类型	Wheels type	聚氨酯(PU)		
2.02	驱动轮尺寸	Driving wheel size	Φ×w(mm)	Φ210×70	
2.03	承载轮尺寸	Bearing wheel size	Φ×w(mm)	Φ80×60	
2.04	驱动轮，平衡轮/承载轮数量(x=驱动轮)	Wheels, number front/rear (x = driven)	1x/4		
2.05	轮距，承载端	Track width	b11 (mm)	400/535	
尺寸 Dimensions					
3.01	提升高度	Lift	h3 (mm)	200	
3.02	操作位置手柄杆最小/最大高度	Overall height(With handle)	h14 (mm)	775/1115	
3.03	货叉最低高度	Fork Height, Lowered	h13 (mm)	85	
3.04	整车长度	Overall length	l1 (mm)	1570	
3.05	车体长度	Length to fork face	l2 (mm)	420	
3.06	整车宽度	Overall width	b1/ b2 (mm)	580/685	
3.07	货叉尺寸	Fork dimensions	s/e/l (mm)	50/150/1150	
3.08	货叉外宽	Width of forks	b5 (mm)	550/685	
3.09	轴距中心处离地间隙	Min .Ground clearance	m2 (mm)	35	
3.10	通道宽度:1000x1200托盘(1200跨货叉放置)	Aisle width with pallet 1000 x 1200 across forks	Ast (mm)	1770	
3.11	通道宽度:800x1200托盘(1200沿货叉放置)	Aisle width with pallet 800 x 1200 along forks	Ast (mm)	1820	
3.12	转弯半径	Min .Turning radius	Wa (mm)	1364	
性能 Performance					
4.01	行走速度，满载/空载	Travel speed, laden/unladen	(km/h)	4.2/4.5	
4.02	提升速度，满载/空载	Lifting speed, with/without load	(mm/s)	30/36	
4.03	下降速度，满载/空载	Lowering speed, with/without load	(mm/s)	55/40	
4.04	最大爬坡度，满载/空载	Maximum climbing ability, with/without load	(%)	5/10	
4.05	制动类型	Service brake	电磁制动(Electromagnetic)		
电机 Drive					
5.01	驱动电机功率	Drive motor, 60 minute rating	(kW)	0.75	0.75 1.0
5.02	起升电机功率	Lift motor rating at S3 15%	(kW)	0.8	
5.03	蓄电池电压/容量	Battery voltage/rated capacity	(V/Ah)	12*2/65	24/20 24/30 24/40 24/60 48/20 48/3
5.04	电池重量(±5%)	Battery weight (±5%)	(kg)	16.3*20	7.8 9.6 12 17 12 17
其它 Other					
6.01	驱动控制类型	Type of drive control	(dB(A))	直流速度控制(DC)	
6.02	噪音水平	Noise level at operator 's ear	≤70机械转向		
6.03	转向类型	Type of steering	机械转向(Mechanical)		



半电动搬运车

Semi-electric pallet truck (Pedestrian)



产品特性

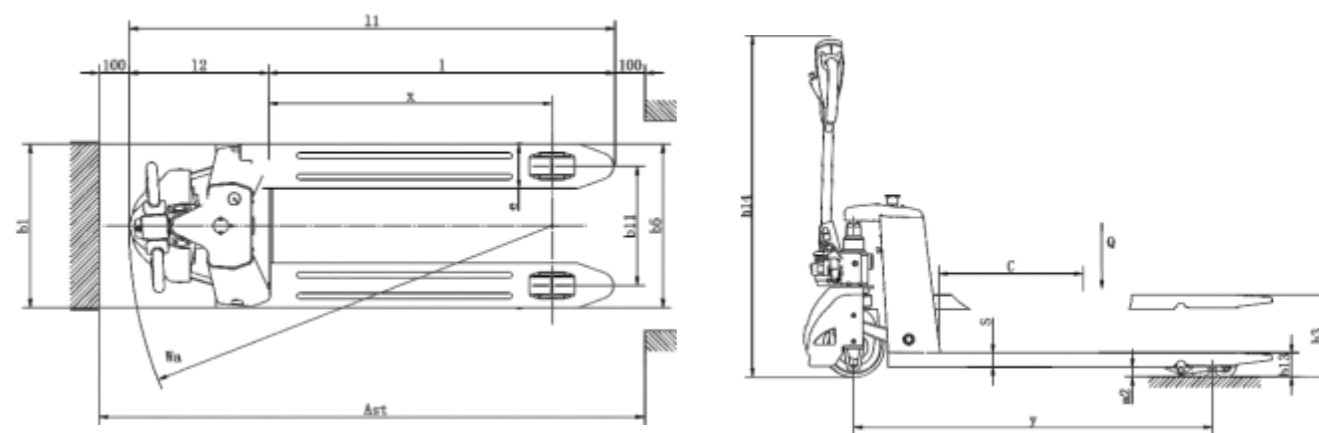
1. 整车简洁、灵巧、可靠、易操作。结构紧凑，转弯半径小。自重小，可在集装箱内使用。低噪音、高性能；
2. 具备断电刹车功能，手柄松开或压到底部，车辆立即断电刹车，当车辆失控或在坡道上时，此功能尤为实用，更加安全、可靠；
3. 标配急停开关，当车辆处于危险状态时，按下急停开关就能切断电源，车辆停止运转，保护操作者人身和设备的安全；
4. 标配内置式充电器充电方便；
5. 前挡板拆卸方便，更换电池维修简单快捷；
6. 后退防撞开关，行车制动采用电磁制动与电机制动双重保障，充分考虑了作业者行车安全。

Product Features

1. The whole vehicle is simple, dexterous, reliable and easy to operate. Compact structure, small turning radius. Small weight, can be used in containers. Low noise, high performance;
2. With power off brake function, the handle is released or pressed to the bottom, the vehicle immediately power off brake, when the vehicle is out of control or on the ramp, this function is especially practical, more safe and reliable;
3. Standard emergency stop switch, when the vehicle is in danger, press the emergency stop switch can cut off the power supply, the vehicle stops running, to protect the operator and equipment safety;
4. Standard built-in charger for easy charging;
5. The front baffle is easy to disassemble, and the battery replacement is simple and quick;
6. Reverse anti-collision switch, dual guarantee of electromagnetic braking and motor braking, fully consider the operator's driving safety.

半电动搬运车参数 Technical Data

特征 Characteristics			
1.01	型号	Model	Sm20
1.02	驱动方式	Power unit	电动(Electric)
1.03	操作方式	Operation	步行式(Pedestrian)
1.04	额定载荷能力	Rated traction weight	Q (t) 2
1.05	载荷中心	Load centre	c (mm) 600
1.06	前悬距	Axle centre to fork face	x (mm) 944
1.07	轴距	Wheel base	y (mm) 1243
1.08	自重 (不含电池)	Service weight with battery	kg 155
轮子、底盘 Wheels/Tyres			
2.01	轮胎类型	Wheels type	聚氨酯(PU)
2.02	驱动轮尺寸	Driving wheel size	Φ×w(mm) Φ210×70
2.03	承载轮尺寸	Bearing wheel size	Φ×w(mm) Φ80×60
2.04	车轮数量, 前轮/后轮 (x=驱动轮)	Wheels, number front/rear (x = driven)	1x/4
2.05	轮距, 承载端	Track width	b11 (mm) 400/535
尺寸 Dimensions			
3.01	提升高度	Lift	h3 (mm) 200
3.02	操作位置手柄杆最小/最大高度	Overall height(With handle)	h14 (mm) 720/1090
3.03	货叉最低高度	lowered height	h13 (mm) 85
3.04	整车长度	Overall length	l1 (mm) 1620
3.05	车体长度	Length to fork face	l2 (mm) 470
3.06	整车宽度	Overall width	b1/ b2 (mm) 550/685
3.07	货叉尺寸	Fork dimensions	s/e/l (mm) 550/150/1150
3.08	货叉外宽	Width of forks	b5 (mm) 550/685
3.09	轴距中心处离地间隙	Min. Ground clearance	m2 (mm) 35
3.10	通道宽度:1000x1200托盘(1200跨货叉放置)	Aisle width with pallet 1000 x 1200 across forks	Ast (mm) 1825
3.11	通道宽度:800x1200托盘(1200沿货叉放置)	Aisle width with pallet 800 x 1200 along forks	Ast (mm) 1875
3.12	转弯半径	Min. Turning radius	Wa (mm) 1415
性能 Performance			
4.01	行走速度, 满载/空载	Travel speed, laden/unladen	4.2/4.5
4.02	最大爬坡度, 满载/空载	Maximum climbing ability, with/without load	(km/h) 3/10
4.03	制动类型	Service brake	(%) 电磁制动(Electromagnetic)
电机 Drive			
5.01	驱动电机功率	Drive motor, 60 minute rating	(kW) 0.75
5.02	起升电机功率	Lift motor rating at S3 15%	(kW) 无
5.03	蓄电池电压/容量	Battery voltage/rated capacity	(V/Ah) 2*12/32
5.04	电池重量(± 5%)	Battery weight (± 5%)	(kg) 10.1*2
其它 Other			
6.01	驱动控制类型	Type of drive control	直流速度控制(DC)
6.02	噪音水平	Noise level at operator 's ear	(dB(A)) ≤70
6.03	转向类型	Type of steering	机械转向(Mechanical)



全电动托盘堆垛车 Electric stacker (Standing on)

产品特性

1. 进口交流控制器，大功率MOSFETS驱动。高频、高效、安静具有无级调速及反接制动功能；
2. 先进的立式交流驱动系统，电动机能得到更多的能量及更大的制动扭力，动力更强劲高效、加速性能更好；
3. 全系配置日型叉车专用门架型钢，塑性和柔韧性好、抗弯能力强、结构稳定性高；
4. 全系标配电子助力转向系统，助力反应非常敏锐手柄操控舒适自如；
5. 交流电动机所需元件数量少，没有需要定期更换的易损件，几乎不用维护，更高效，更坚固耐用；
6. 标配蓄电池侧拉配置，更换蓄电池更加方便快速方便连续作业大大提高工作效率；
7. 标配起升电限位功能，当货叉升至顶部时，系统自动切断上行电源，平稳停车，有效防止“冲顶”事故的发生。

Product Features

1. Imported AC controller, high power MOSFETS driver. High frequency, efficient, quiet, stepless speed regulation and reverse moving function;
2. Advanced vertical AC drive system, motor can get more energy and greater brake torque, more powerful Efficient, accelerated performance is better;
3. The whole system is configured with a special gantry steel, plasticity and flexibility, strong anti-bending ability; high structural stability;
4. All-system standard electronic power steering system, helping to respond very sensitive handles and comfortable;
5. The number of components required for the AC motor is small, and if it is not necessary to regularly replace it, it is hardly maintained, more efficient, and more strong and sturdy;
6. Standard battery side pull configuration, battery replacement is more convenient, fast and convenient continuous operation greatly improve work efficiency;
7. Standard the boost limit function, when the fork rises to the top, the system automatically cuts off the uplink power supply, smooth parking, effective Prevent the occurrence of "tweak" accidents.



G系列全电动托盘堆垛车参数 Technical Data

特征 Characteristics		Model					
1.01 型号	Model	CL1016GA	CL1030GA	CL1616GA	CL1630GA	CL2016GA	CL2030GA
1.02 驱动方式	Power unit	电动(Electric)					
1.03 操作方式	Operation	站驾式(Standing on)					
1.04 额定载重能力	Rated traction weight	Q (t)	1	1.6	2		
1.05 载荷中心距	Load centre	c (mm)	600				
1.06 前悬距	Axle centre to fork face	x (mm)	673				
1.07 轴距	Wheel base	y (mm)	1332				
1.08 自重 (含电瓶)	Service weight with battery	kg	920	1030	940	1065	960 1090
轮子、底盘 Wheels/Tyres		聚氨酯 (PU)					
2.01 轮胎类型	Wheels type	聚氨酯 (PU)					
2.02 驱动轮尺寸	Driving wheel size	Φ×w(mm)	Φ250×75				
2.03 承载轮尺寸	Bearing wheel size	Φ×w(mm)	Φ80×70				
2.04 平衡轮尺寸	additional wheels (dimensions)	Φ×w(mm)	Φ115×55				
2.05 驱动轮, 平衡轮/承载轮数量 (x=驱动轮)	Wheels, number front/rear (x = driven)		1x+2/4				
2.06 轮距, 驱动端	Track width	b10 (mm)	580				
2.07 轮距, 承载端	Track width	b11 (mm)	515/390				
尺寸 Dimensions		尺寸 (mm)					
3.01 最低门架高度	Height of mast, lowered	h1 (mm)	1990	1991	1990	1991	1990 1991
3.02 自由提升高度	Free lift	h2 (mm)	166				
3.03 提升高度	Lift	h3 (mm)	1600	3000	1600	3000	1600 3000
3.04 门架最大高度	Height of mast, extended	h4 (mm)	1990	3408	1990	3408	1990 3408
3.05 站台面高度	Height of seat/stand-on platform	h7 (mm)	128				
3.06 操作位置手柄杆最小/最大高度	Overall height(With handle)	h14 (mm)	1063/1440				
3.07 货叉最低高度	Lowered fork height	h13 (mm)	85				
3.08 整车长度	Overall length	l1 (mm)	2040				
3.09 车体长度	Length to fork face	l2 (mm)	890				
3.10 整车宽度	Overall width	b1/ b2 (mm)	808				
3.11 货叉尺寸	Fork dimensions	s/e/l (mm)	60/180/1150				
3.12 货叉外宽	Width of forks	b5 (mm)	570/695				
3.13 轴距中心处离地间隙	Min .Ground clearance	m2 (mm)	24				
3.14 通道宽度:1000x1200托盘(1200跨货叉放置)	Aisle width with pallet 1000 x 1200 across forks	Ast (mm)	2452				
3.15 通道宽度:800x1200托盘(1200沿货叉放置)	Aisle width with pallet 800 x 1200 along forks	Ast (mm)	2432				
3.16 转弯半径	Min .Turning radius	Wa (mm)	1570				
性能 Performance		性能 (km/h)					
4.01 行走速度, 满载/空载	Travel speed, laden/unladen	(km/h)	5.2/5.5				
4.02 提升速度, 满载/空载	Lifting speed, with/without load	(mm/s)	95/130	80/130	70/130		
4.03 下降速度, 满载/空载	Lowering speed, with/without load	(mm/s)	190/180	180/180	180/180		
4.04 最大爬坡度, 满载/空载	Maximum climbing ability, with/without load	(%)	6/8				
4.05 制动类型	Service brake		电磁制动(Electromagnetic)				
电机 Drive		电机 (kW)					
5.01 驱动电机功率	Drive motor, 60 minute rating	(kW)	1.5	2.5	2.5		
5.02 起升电机功率	Lift motor rating at S3 15%	(kW)	3	3	3		
5.03 蓄电池电压/容量	Battery voltage/rated capacity	(V/Ah)	24/210				
5.04 电池重量(± 5%)	Battery weight (± 5%)	(kg)	210				
其它 Other		其它 (dB(A))					
6.01 驱动控制类型	Type of drive control		交流速度控制(AC)				
6.02 噪音水平	Noise level at operator 's ear	(dB(A))	≤70				
6.03 转向类型	Type of steering		电子助力(Electric)				

