

# 全电动托盘堆垛车CL16三级门架

Electric stacker (Standing on)

## 产品特性

- 1.全系标配电子助力转向系统，助力反应非常敏锐，手柄操控舒适自如，大大降低了操作者的劳动强度，转向低速时轻、高速时稳，转向更加智能、操控更加精准，驾驶感受更加顺畅；
- 2.高性能蓄电池，循环性能和深放电恢复能力优越，续航能力超强，使用寿命超长；
- 3.驾驶位两侧配置保护臂，贴心保护操作者安全；
- 4.驱动系统中间设浮动支架，确保车辆运行的稳定性，转弯时车身平稳、不倾斜；
- 5.踏板脚感舒适，下装有64片蝶形弹片，能迅速吸收车辆运行时产生的震动，缓解路面带来的冲击；交流电动机所需元件数量少，没有需要定期更换的易损件，几乎不用维护，更高效，更坚固耐用。

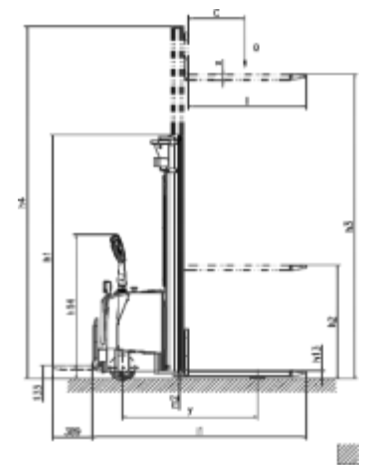
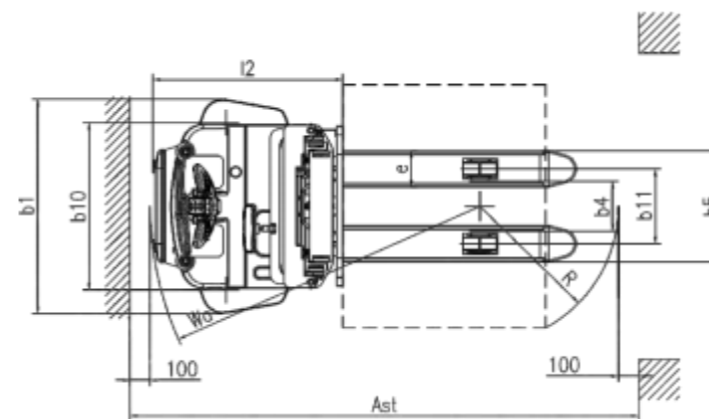
## Product Features

- 1.All-pointed standard electronic power steering system, help the response very well, the handle manipulation is comfortable, greatly reduces the operator's labor intensity, turning to low speed, high speed, steering more intelligent, more accurate, driving feel more Smooth;
- 2.High performance battery, cycle performance, and deep discharge recovery ability, superior battery life, long service life is long;
- 3.Configure the protective arm on both sides of the driving position to protect the operator security;
- 4.The center of the drive system sets a floating bracket to ensure the stability of the vehicle operation, and the body is smooth and not tilted;
- 5.The pedal foot feels comfortable, 64 pieces of butterfly shrapnel can quickly absorb the vibration generated by the vehicle, alleviate the impact of the road surface; the number of components required for the AC motor is small, and there is no need to replace the loss of regular replacement. Almost no maintenance, more efficient, and more robust.



## 全电动托盘堆垛车CL16三级门架参数 Technical Data

特征 Characteristics				CL1545QD	CL1555QD
1.01	型号	Model		CL1545QD	CL1555QD
1.02	驱动方式	Power unit		电动(Electric)	
1.03	操作方式	Operation		站驾式 (Standing on)	
1.04	额定载荷能力	Rated traction weight	Q (kg)	1500	
1.05	载荷中心距	Load centre	c (mm)	600	
1.06	前悬距	Axle centre to fork face	x (mm)	675	
1.07	轴距	Wheel base	y (mm)	1325	
1.08	自重 (含电瓶)	Service weight with battery	kg	1260	1340
轮子、底盘 Wheels/Tyres					
2.01	轮胎类型	Wheels type		聚氨酯 (PU)	
2.02	驱动轮尺寸	Driving wheel size	Φ×w(mm)	Φ250×75	
2.03	承载轮尺寸	Bearing wheel size	Φ×w(mm)	Φ80×70	
2.04	平衡轮尺寸	additional wheels (dimensions)	Φ×w(mm)	Φ150×58	
2.05	驱动轮, 平衡轮/承载轮数量 (x=驱动轮)	Wheels, number front/rear (x = driven)		1, 4/2	
2.06	轮距, 驱动端	Track width	b10 (mm)	828	
2.07	轮距, 承载端	Track width	b11 (mm)	390/515	
尺寸 Dimensions					
3.01	最低门架高度	Free lift	h1 (mm)	2054	2386
3.02	自由提升高度	Lift	h2 (mm)	1561	1894
3.03	提升高度	Height of mast, extended	h3 (mm)	4500	5500
3.04	门架最大高度	Height of seat/stand-on platform	h4 (mm)	5060	6060
3.05	操作位置手柄杆最小/最大高度	Overall height(With handle)	h14 (mm)	1040/1415	
3.06	货叉最低高度	Lowered fork height	h13 (mm)	86	
3.07	整车长度	Overall length	l1 (mm)	2085	
3.08	车体长度	Length to fork face	l2 (mm)	925	
3.09	整车宽度	Overall width	b1/ b2 (mm)	1060	
3.10	货叉尺寸	Fork dimensions	s/e/l (mm)	60/180/1150	
3.11	货叉外宽	Width of forks	b5 (mm)	570/695	
3.12	轴距中心处离地间隙	Min .Ground clearance	m2 (mm)	26	
3.13	通道宽度:1000x1200托盘(1200跨货叉放置)	Aisle width with pallet 1000 x 1200 across forks	Ast (mm)	2503	
3.14	通道宽度:800x1200托盘(1200沿货叉放置)	Aisle width with pallet 800 x 1200 along forks	Ast (mm)	2480	
3.15	转弯半径	Min .Turning radius	Wa (mm)	1620	
性能 Performance					
4.01	行走速度, 满载/空载	Travel speed, laden/unladen	(km/h)	5.2/5.5	
4.02	提升速度, 满载/空载	Lifting speed, with/without load	(mm/s)	108/147	
4.03	下降速度, 满载/空载	Lowering speed, with/without load	(mm/s)	175/110	
4.04	最大爬坡度, 满载/空载	Maximum climbing ability, with/without load	(%)	6/8	
4.05	制动类型	Service brake		电磁制动(Electromagnetic)	
电机 Drive					
5.01	驱动电机功率	Drive motor, 60 minute rating	(kW)	1.5	
5.02	起升电机功率	Lift motor rating at S3 15%	(kW)	3.0	
5.03	蓄电池电压/容量	Battery voltage/rated capacity	(V/Ah)	24/240	
5.04	电池重量	Battery weight ( ± 5%)	(kg)	240	
其它 Other					
6.01	驱动控制类型	Type of drive control		交流速度控制(AC)	
6.02	噪音水平	Noise level at operator 's ear	(dB(A))	≤70	



## 全电动托盘堆垛车 Electric stacker (Standing on)

### 产品特性

1. 进口交流控制器，具有无级调速、反接制动功能及短路保护功能。
2. 高性能蓄电池，循环性能和深放电恢复能力优越，续航能力超强，使用寿命超长。
3. 主门架采用12#槽钢，超高强度的车体，保证了重载堆垛车的稳定性。
4. 具备断电刹车功能，当车辆失控或在坡道上时，此功能尤为实用，更加安全、可靠。标配起升电限位功能，当货叉升至顶部时，系统自动切断上行电源，平稳停车。
5. 控制器带自我诊断功能，手持单元与控制器联接后可显示故障代码，迅速精准排查故障。

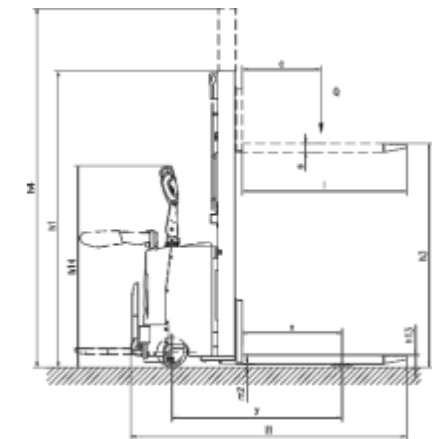
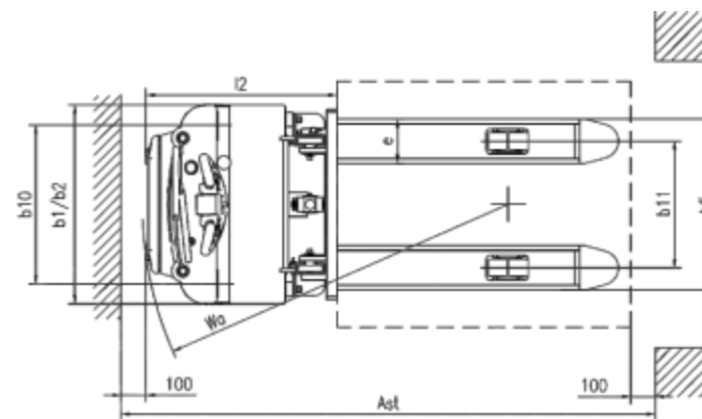
### Product Features

1. Imported AC controller with stepless speed regulation, reverse connection braking and short circuit protection.
2. High performance storage batteries, cycle performance and deep discharge recovery ability, superior battery life, long service life.
3. The main frame uses 12 # tank steel, ultra-high strength body, ensuring the stability of the heavy-duty stacker;
4. With power off brake function, when the vehicle is out of control or on the ramp, this function is particularly practical, more safe and reliable.  
Standard lifting power limit function, when the forks rise to the top, the system will automatically cut off the power supply, stable parking.
5. The controller has self-diagnosis function, the fault code can be displayed after the hand-held unit is connected with the controller, and the fault can be checked quickly and accurately.



### 全电动托盘堆垛车参数 Technical Data

特征 Characteristics											
1.01	型号	Model	CL2016A	CL2026A	CL2032A	CL2036A	CL2026B	CL2032B	CL2036B		
1.02	驱动方式	Power unit	电动(Electric)								
1.03	操作方式	Operation	站驾式(Standing on)								
1.04	额定载重能力	Rated traction weight	Q (t)		2						
1.05	载荷中心距	Load centre	c (mm)		600						
1.06	前悬距	Axle centre to fork face	x (mm)		675						
1.07	轴距	Wheel base	y (mm)		1180						
1.08	自重 (含电瓶)	Service weight with battery	847	937	967	1007	1032	1040	1057		
轮子、底盘 Wheels/Tyres											
2.01	轮胎类型	Wheels type	聚氨酯 (PU)								
2.02	驱动轮尺寸	Driving wheel size	Φ×w(mm)		Φ250×80						
2.03	承载轮尺寸	Bearing wheel size	Φ×w(mm)		Φ80×70						
2.04	平衡轮尺寸	additional wheels (dimensions)	Φ×w(mm)		Φ150×58						
2.05	驱动轮，平衡轮/承载轮数量 (x=驱动轮)	Wheels, number front/rear (x = driven)	1, 4/2								
2.06	轮距，驱动端	Track width	b10 (mm)		675						
2.07	轮距，承载端	Track width	b11 (mm)		390/515						
尺寸 Dimensions											
3.01	最低门架高度	Free lift	h1 (mm)		2077	1877	2127	2327	1862	2162	2362
3.02	自由提升高度	Lift	h2 (mm)		0	0	0	0	0	0	0
3.03	提升高度	Height of mast, extended	h3 (mm)		1600	2600	3200	3600	2600	3200	3600
3.04	门架最大高度	Height of seat/stand-on platform	h4 (mm)		2077	3137	3687	4087	3232	3732	4132
3.05	操作位置手柄杆最小/最大高度	Overall height(With handle)	h14 (mm)		1040/1415						
3.06	货叉最低高度	Lowered fork height	h13 (mm)		86						
3.07	整车长度	Overall length	l1 (mm)		1928		1950				
3.08	车体长度	Length to fork face	l2 (mm)		770	764		764			
3.09	整车宽度	Overall width	b1/ b2 (mm)		808						
3.10	货叉尺寸	Fork dimensions	s/e/l (mm)		60/180/1150						
3.11	货叉外宽	Width of forks	b5 (mm)		570/695						
3.12	轴距中心处离地间隙	Min .Ground clearance	m2 (mm)		26						
3.13	通道宽度:1000x1200托盘(1200跨货叉放置)	Aisle width with pallet 1000 x 1200 across forks	Ast (mm)		2346						
3.14	通道宽度:800x1200托盘(1200沿货叉放置)	Aisle width with pallet 800 x 1200 along forks	Ast (mm)		2325						
3.15	转弯半径	Min .Turning radius	Wa (mm)		1460						
性能 Performance											
4.01	行走速度，满载/空载	Travel speed, laden/unladen	(km/h)		5.2/5.5						
4.02	提升速度，满载/空载	Lifting speed, with/without load	(mm/s)		90/110		71/108				
4.03	下降速度，满载/空载	Lowering speed, with/without load	(mm/s)		150/140		110/70				
4.04	最大爬坡度，满载/空载	Maximum climbing ability, with/without load	(%)		6/8						
4.05	制动类型	Service brake	电磁制动(Electromagnetic)								
电机 Drive											
5.01	驱动电机功率	Drive motor, 60 minute rating	(kW)		1.5						
5.02	起升电机功率	Lift motor rating at S3 15%	(kW)		3						
5.03	蓄电池电压/容量	Battery voltage/rated capacity	(V/Ah)		24/210						
5.04	电池重量	Battery weight ( ± 5%)	(kg)		190						
其它 Other											
6.01	驱动控制类型	Type of drive control	交流速度控制(AC)								
6.02	噪音水平	Noise level at operator 's ear	(dB(A))		≤70						



## 全电动托盘堆垛车 Electric stacker (Standing on)

### 产品特性

1. 进口交流控制器,具有无级调速、反接制动功能及短路保护功能;
2. 控制手柄上安装紧急反向开关,当车辆后退失控时,能防止操作者的身体受到挤压伤害;
3. 标配起升电限位功能,当货叉升至顶部时,系统自动切断上行电源,平稳停车;
4. 标配高货位限速装置,当门架从底部上升一小段距离后,行驶速度自动降低,提高作业安全;
5. 操作手柄加装龟速开关,低速控制更加精准;
6. 当门架回落到接近底部位置时,行驶速度自动加快,提高作业效率。

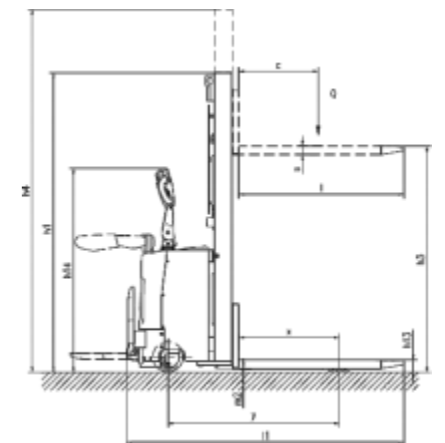
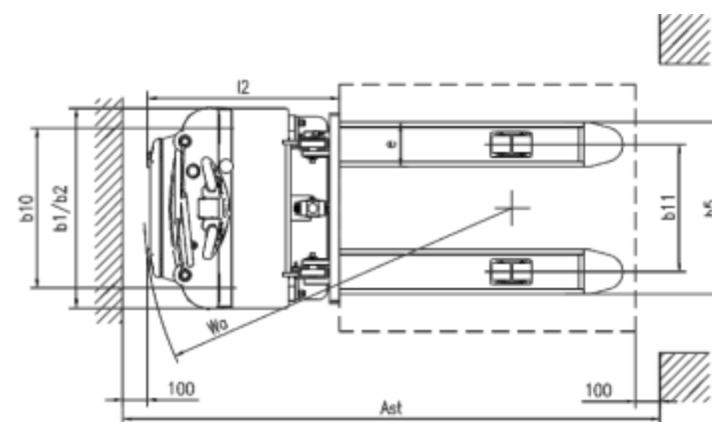
### Product Features

1. Imported AC controller, has stepless speed control, reverse warping function and short circuit protection function;
2. Control the emergency reverse switch on the handle, when the vehicle is retracted, prevent the operator from being squeezed;
3. Standard the lifting limit function, when the fork rises to the top, the system automatically cuts off the uplink power supply, smooth parking;
4. Standard with a high-serving speed limit device, when the door frame is from the bottom. After the distance is raised, the driving speed is automatically reduced, and the operation is improved;
5. Operating handle is adding turtle speed switches, low-speed control is more accurate;
6. When the door frame falls to the bottom position, the driving speed is automatically accelerated and the work efficiency is improved.



### 全电动堆高车参数 Technical Data

特征 Characteristics								
1.01	型号 Model		CL1016	CL1026	CL1032	CL1516	CL1526	CL1532
1.02	驱动方式 Power unit		电动(Electric)					
1.03	操作方式 Operation		站驾式(Standing on)					
1.04	额定载荷能力 Rated traction weight	Q (t)	1		1.5			
1.05	载荷中心距 Load centre	c (mm)	600					
1.06	前悬距 Axle centre to fork face	x (mm)	675					
1.07	轴距 Wheel base	y (mm)	1190					
1.08	自重 (含电瓶) Service weight with battery	kg	818	887	917	827	897	927
轮子、底盘 Wheels/Tyres								
2.01	轮胎类型 Wheels type		聚氨酯 (PU)					
2.02	驱动轮尺寸 Driving wheel size	Φ×w(mm)	Φ250×80					
2.03	承载轮尺寸 Bearing wheel size	Φ×w(mm)	Φ80×70					
2.04	平衡轮尺寸 additional wheels (dimensions)	Φ×w(mm)	Φ150×58					
2.05	驱动轮, 平衡轮/承载轮数量 (x=驱动轮) Wheels, number front/rear (x = driven)		1, 4/2					
2.06	轮距, 驱动端 Track width	b10 (mm)	675					
2.07	轮距, 承载端 Track width	b11 (mm)	390/515					
尺寸 Dimensions								
3.01	最低门架高度 Free lift	h1 (mm)	2077	1877	2127	2077	1877	2127
3.02	自由提升高度 Lift	h2 (mm)	0	0	0	0	0	0
3.03	提升高度 Height of mast, extended	h3 (mm)	1600	2600	3200	1600	2600	3200
3.04	门架最大高度 Height of seat/stand-on platform	h4 (mm)	2077	3137	3687	2077	3137	3687
3.05	操作位置手柄杆最小/最大高度 Overall height(With handle)	h14 (mm)	1040/1415					
3.06	货叉最低高度 Lowered fork height	h13 (mm)	86					
3.07	整车长度 Overall length	l1 (mm)	1934					
3.08	车体长度 Length to fork face	l2 (mm)	770	764		770	764	
3.09	整车宽度 Overall width	b1/ b2 (mm)	808					
3.10	货叉尺寸 Fork dimensions	s/e/l (mm)	60/180/1150					
3.11	货叉外宽 Width of forks	b5 (mm)	570/695					
3.12	轴距中心处离地间隙 Min .Ground clearance	m2 (mm)	26					
3.13	通道宽度:1000x1200托盘(1200跨货叉放置) Aisle width with pallet 1000 x 1200 across forks	Ast (mm)	2335					
3.14	通道宽度:800x1200托盘(1200沿货叉放置) Aisle width with pallet 800 x 1200 along forks	Ast (mm)	2305					
3.15	转弯半径 Min .Turning radius	Wa (mm)	1460					
性能 Performance								
4.01	行走速度, 满载/空载 Travel speed, laden/unladen	(km/h)	5.2/5.5					
4.02	提升速度, 满载/空载 Lifting speed, with/without load	(mm/s)	100/135					
4.03	下降速度, 满载/空载 Lowering speed, with/without load	(mm/s)	142/124		146/128			
4.04	最大爬坡度, 满载/空载 Maximum climbing ability, with/without load	(%)	6/8					
4.05	制动类型 Service brake		电磁制动(Electromagnetic)					
电机 Drive								
5.01	驱动电机功率 Drive motor, 60 minute rating	(kW)	1.5					
5.02	起升电机功率 Lift motor rating at S3 15%	(kW)	2.2					
5.03	蓄电池电压/容量 Battery voltage/rated capacity	(V/Ah)	24/210					
5.04	电池重量 Battery weight ( ± 5%)	(kg)	190					
其它 Other								
6.01	驱动控制类型 Type of drive control		交流速度控制(AC)					
6.02	噪音水平 Noise level at operator 's ear	(dB(A))	≤70					





# 全电动双起升堆垛车

Electric double-lifting stacker (Standing on)

## 产品特性

1. 先进的立式交流驱动系统，电动机能得到更多的能量及更大的制动扭力，动力更强劲高效，加速性能更好；
2. 全系标配电子助力转向系统，助力反应非常敏感手柄操控部造自如；
3. 双提升设计，可同时搬运两个托盘，并兼有堆垛车的功能；
4. 配置增压油缸，速度快、出力大、能耗低，防止重载时出现打滑现象；
5. 由于相比普通堆垛车有可提升的车腿，可以比堆垛车更好的克服坡道、不平整的地面等障碍；
6. 标配起升电限位功能，当货叉升至顶部时，系统自动切断上行电源，平稳停车，有效防止“冒顶”事故的发生。

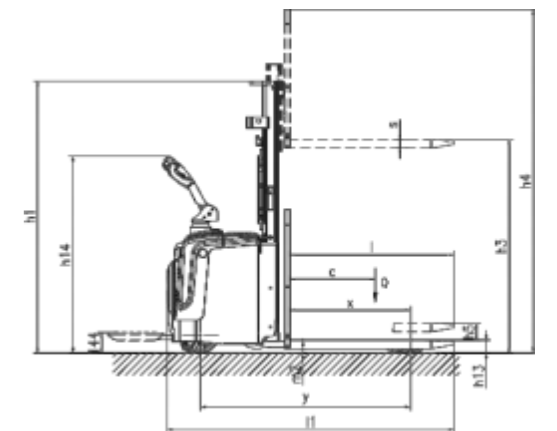
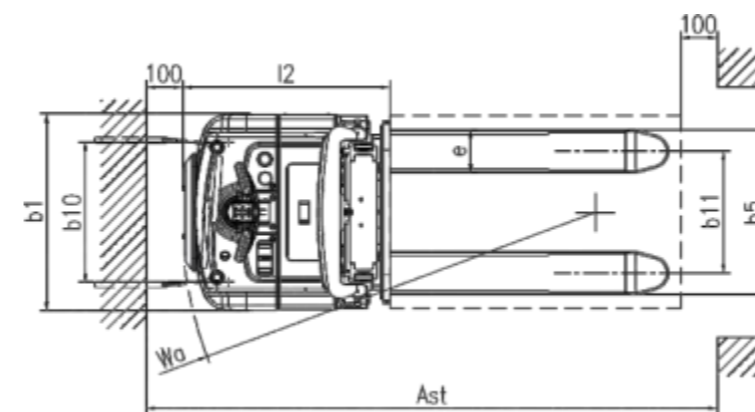
## Product Features

1. Advanced vertical AC drive system, motor can get more energy and greater brake torque, power is more powerful, acceleration performance is better;
2. All-system standard electronic power steering system, helping to respond very sensitive to the handle manipulation department;
3. Double lifting design, can carry two pallets at the same time, and there is a function of stacker;
4. Configure boost red, fast speed, large output, low energy consumption, prevent the slippage when heavy load;
5. Because there is a lifting car leg, it can overcome the ramp, unlattd ground or other obstacles than the stacked car;
6. Standard the boost limit function, when the fork rises to the top, the system automatically cuts off the uplink power supply, smooth parking, effectively prevents the occurrence of "the top" accident.



## 全电动双起升堆垛车参数 Technical Data

特征 Characteristics		CL1525GC CL1530GC CL1536GC CL2025GC CL2030GC CL2036GC								
1.01	型号	Model								
1.02	驱动方式(电动、柴油、汽油、液化气、手动)	Power unit	电动(Electric)							
1.03	操作方式(手动式、步行式、站驾式、拣选式)	Operation	站驾式(Standing on)							
1.04	额定载荷能力	Rated traction weight	Q (t)		1.5 2					
1.05	门架提升承载能力	Load capacity of the mast	Q (kg)		1000	950	800	1200	1150	1000
1.06	载荷中心距	Load centre	c (mm)		600					
1.07	前悬距	Axle centre to fork face	x (mm)		848					
1.08	轴距	Wheel base	y (mm)		1472					
1.09	自重(含电瓶)	Service weight with battery	kg		1032	1072	1120	1105	1145	1190
轮子、底盘 Wheels/Tyres				聚氨酯 (PU)						
2.03	轮胎类型	Wheels type			聚氨酯 (PU)					
2.04	驱动轮尺寸	Driving wheel size	Φ×w(mm)		Φ250×75					
2.05	承载轮尺寸	Bearing wheel size	Φ×w(mm)		Φ80×70					
2.06	平衡轮尺寸	additional wheels (dimensions)	Φ×w(mm)		Φ115×55					
2.07	驱动轮, 平衡轮/承载轮数量 (x=驱动轮)	Wheels, number front/rear (x = driven)			1x, 2/4					
2.08	轮距, 驱动端	Track width	b10 (mm)		580					
2.09	轮距, 承载端	Track width	b11 (mm)		505/390					
尺寸 Dimensions										
3.01	最低门架高度	Free lift	h1 (mm)		1799	2049	2349	1799	2049	2349
3.02	自由提升高度	Lift	h2 (mm)		0	0	0	0	0	0
3.03	提升高度	Height of mast, extended	h3 (mm)		2530	3030	3630	2530	3030	3630
3.04	门架最大高度	Height of seat/stand-on platform	h4 (mm)		2943	3443	4043	2943	3443	4043
3.05	初始提升	The initial boost	h5 (mm)		120					
3.06	操作位置手柄杆最小/最大高度	Overall height(With handle)	h14 (mm)		1065/1365					
3.07	货叉最低高度	Lowered fork height	h13 (mm)		90					
3.08	整车长度	Overall length	l1 (mm)		2000					
3.09	车体长度	Length to fork face	l2 (mm)		850					
3.10	整车宽度	Overall width	b1/ b2 (mm)		808					
3.11	货叉尺寸	Fork dimensions	s/e/l (mm)		60/180/1150					
3.12	货叉外宽	Width of forks	b5 (mm)		685/570					
3.13	轴距中心处离地间隙	Min.Ground clearance	m2 (mm)		28					
3.14	通道宽度:1000x1200托盘(1200跨货叉放置)	Aisle width with pallet 1000 x 1200 across forks	Ast (mm)		2530					
3.15	通道宽度:800x1200托盘(1200沿货叉放置)	Aisle width with pallet 800 x 1200 along forks	Ast (mm)		2443					
3.16	转弯半径	Min.Turning radius	Wa (mm)		1710					
性能 Performance										
4.01	行走速度, 满载/空载	Travel speed,laden/unladen	(km/h)		5.2/5.5					
4.02	提升速度, 满载/空载	Lifting speed, with/without load	(mm/s)		100/130					
4.03	下降速度, 满载/空载	Lowering speed, with/without load	(mm/s)		180/140					
4.04	最大爬坡度, 满载/空载	Maximum climbing ability, with/without load	(%)		6/8					
4.05	制动类型	Service brake			电磁制动(Electromagnetic)					
电机 Drive										
5.01	驱动电机功率	Drive motor, 60 minute rating	(kW)		1.5					
5.02	起升电机功率	Lift motor rating at S3 15%	(kW)		2.2					
5.03	蓄电池电压/容量	Battery voltage/rated capacity	(V/Ah)		24/210					
5.04	电池总量	Battery weight (± 5%)	(kg)		190					
其它 Other										
6.01	驱动控制类型	Type of drive control			交流速度控制(AC)					
6.02	噪音水平	Noise level at operator 's ear	(dB(A))		≤75					





## 全电动托盘堆垛车(步行式) Electric stacker (Pedestrian)

### 产品特性

1. 功率强劲的交流电机，采埃孚变速箱提供卓越的加速性能，提高作业效率，节省能源；
2. 进口交流控制器，大功率MOSFETS驱动，高频、高效、安静，具有无级调速及反接制动功能。完善的温度保护和补偿功能实现热保护和稳定输出；
3. 钥匙开关和电量表，喇叭，上下键按钮，龟速开关都集成在操作手柄上，操作更简便；
4. 操作手柄为步行式车辆加长设计，符合人体工程学原理，操作舒适；
5. 侧驾驱动设计，有效减小作业通道，转弯半径小、视野更好，适合狭小空间作业。

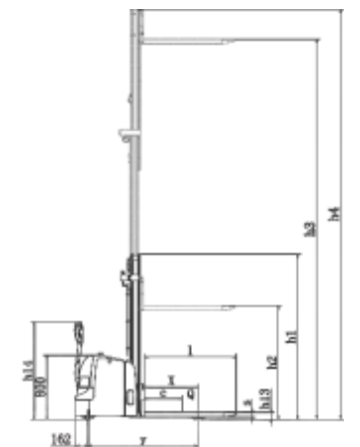
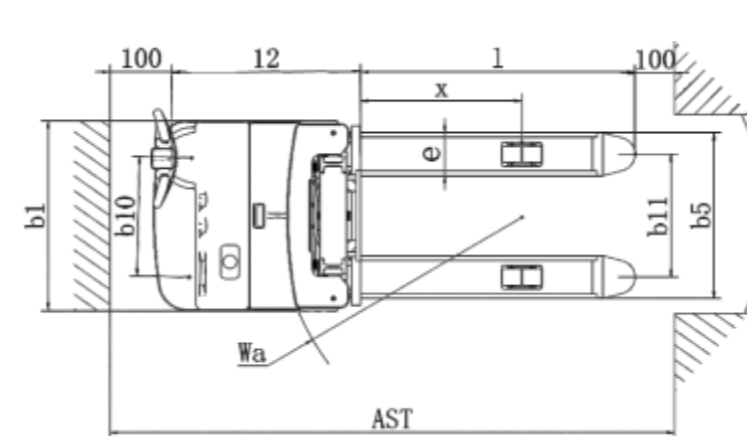
### Product Features

1. Powerful AC motor, plus. Avolve gearbox provides superior acceleration performance, improves work efficiency, and saves energy;
2. Imported AC controller, high power MOSFETS driver, high frequency, efficient, quiet, has stepless speed regulation and anti-warming function. Improved temperature protection and compensation functions to achieve thermal protection and stable output;
3. Key switch and electric meter, horn, up and down button, turtle speed switch are integrated in the operation handle, easy to operate;
4. Operation handle is a long-term design of walking vehicles, in line with ergonomic principles, comfortable operation;
5. Side driving driver design, effectively reducing job channels, small turn radius, better field of view, suitable for narrow space operations.



### 全电动托盘堆垛车(步行式)参数 Technical Data

特征 Characteristics			
1.01	型号	Model	CL2030 GF
1.02	驱动方式	Power unit	电动(Electric)
1.03	操作方式	Operation	步行式(Pedestrian)
1.04	额定载重能力	Rated traction weight	Q (t) 2.0
1.05	载荷中心距	Load centre	c (mm) 600
1.06	前悬距	Axle centre to fork face	x (mm) 672
1.07	轴距	Wheel base	y (mm) 1384
1.08	自重(含电瓶)	Service weight with battery	kg 966
轮子、底盘 Wheels/Tyres			
2.01	轮胎类型	Wheels type	聚氨酯 (PU)
2.02	驱动轮尺寸	Driving wheel size	Φ×w(mm) Φ230×75
2.03	承载轮尺寸	Bearing wheel size	Φ×w(mm) Φ80×70
2.04	平衡轮尺寸	additional wheels (dimensions)	Φ×w(mm) Φ150×58
2.05	驱动轮, 平衡轮/承载轮数量 (x=驱动轮)	Wheels, number front/rear (x = driven)	1x+1/4
2.06	轮距, 驱动端	Track width	b10 (mm) 526
2.07	轮距, 承载端	Track width	b11 (mm) 390/515
尺寸 Dimensions			
3.01	最低门架高度	Free lift	h1 (mm) 1991
3.02	自由提升高度	Lift	h2 (mm) 166
3.03	提升高度	Height of mast, extended	h3 (mm) 3000
3.04	门架最大高度	Height of seat/stand-on platform	h4 (mm) 3408
3.05	操作位置手柄杆最小/最大高度	Overall height(With handle)	h14 (mm) 870/1200
3.06	货叉最低高度	Lowered fork height	h13 (mm) 86
3.07	整车长度	Overall length	l1 (mm) 2022
3.08	车体长度	Length to fork face	l2 (mm) 872
3.09	整车宽度	Overall width	b1/ b2 (mm) 795
3.10	货叉尺寸	Fork dimensions	s/e/l (mm) 60/180/1150
3.11	货叉外宽	Width of forks	b5 (mm) 570/695
3.12	轴距中心处离地间隙	Min .Ground clearance	m2 (mm) 26
3.13	通道宽度:1000x1200托盘(1200跨货叉放置)	Aisle width with pallet 1000 x 1200 across forks	Ast (mm) 2435
3.14	通道宽度:800x1200托盘(1200沿货叉放置)	Aisle width with pallet 800 x 1200 along forks	Ast (mm) 2412
3.15	转弯半径	Min .Turning radius	Wa (mm) 1550
性能 Performance			
4.01	行走速度, 满载/空载	Travel speed, laden/unladen	(km/h) 4.0/4.2
4.02	提升速度, 满载/空载	Lifting speed, with/without load	(mm/s) 80/210
4.03	下降速度, 满载/空载	Lowering speed, with/without load	(mm/s) 152/160
4.04	最大爬坡度, 满载/空载	Maximum climbing ability, with/without load	(%) 4/10
4.05	制动类型	Service brake	电磁制动(Electromagnetic)
电机 Drive			
5.01	驱动电机功率	Drive motor, 60 minute rating	(kW) 1.5
5.02	起升电机功率	Lift motor rating at S3 15%	(kW) 3.0
5.03	蓄电池电压/容量	Battery voltage/rated capacity	(V/Ah) 24/210
5.04	电池重量(±5%)	Battery weight (± 5%)	(kg) 195
其它 Other			
6.01	驱动控制类型	Type of drive control	交流速度控制(AC)
6.02	噪音水平	Noise level at operator 's ear	(dB(A)) ≤70
6.03	转向类型	Type of steering	机械转向 (Mechanical steering)





## 全电动托盘堆垛车(步行式)

Electric stacker (Pedestrian)

### 产品特性

1. 内外门架之间设置了加强筋，确保负重升高时门架不往前倾，整车稳定性更好；
2. 德国原装进口防水微动开关，适应寒冷、潮湿、粉尘等各种恶劣环境；
3. 钥匙开关，电量表，上升下降按钮，龟速开关都集成在操作手柄上，操作更简便；
4. 操作手柄配置优质的气压式弹簧，松开手柄，自动缓慢复位，经久耐用；
5. 操作手柄为步行式车辆加长设计，符合人体工程学原理，操作舒适；
6. 侧驾驱动设计，有效减小作业通道，转弯半径小、视野更好，适合狭小空间作业；
7. 免维护的蓄电池无需借助其他工具就能更换，更加便利。

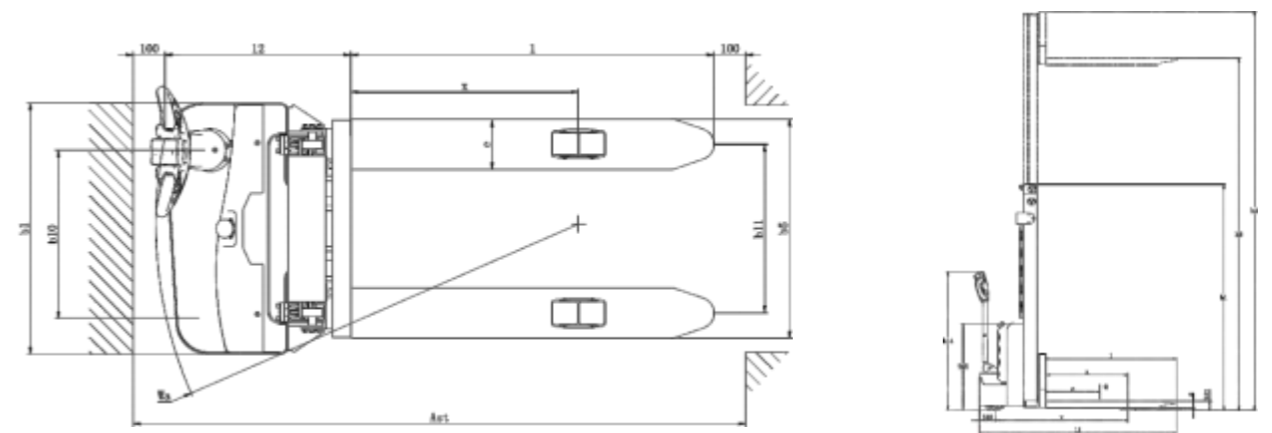
### Product Features

1. Setting up a reinforcing rib between the inside and outside portraits, ensuring that the door frame does not pour it forward, and the stability of the vehicle is better;
2. Germany imported waterproof micro-power switch, adapt to cold, moist, dust and other harsh environments;
3. Key switch, electric meter, up and down button, turtle speed switch are integrated in the operation handle, easy to operate;
4. Operate handles Configure high quality air pressure spring, loosen the handle, automatically reset, durable;
5. Operating handles are long-range vehicles, in line with ergonomic principles, comfortable operation;
6. Side driving driver design, effectively reducing job channels, small turn radius, better vision, suitable for narrow space operations;
7. Maintenance-free batteries do not need to be replaced with other tools, more convenient.



### 全电动托盘堆垛车(步行式) Technical Data

特征 Characteristics			
1.01	型号	Model	CL1530JB
1.02	驱动方式	Power unit	电动(Electric)
1.03	操作方式	Operation	步行式(Pedestrian)
1.04	额定载荷能力	Rated traction weight	Q (t) 1.5
1.05	载荷中心距	Load centre	c (mm) 600
1.06	前悬距	Axle centre to fork face	x (mm) 780
1.07	轴距	Wheel base	y (mm) 1225
1.08	自重(含电瓶)	Service weight with battery	kg 504
轮子、底盘 Wheels/Tyres			
2.01	轮胎类型	Wheels type	聚氨酯 (PU)
2.02	驱动轮尺寸	Driving wheel size	Φ×w(mm) Φ210×70
2.03	承载轮尺寸	Bearing wheel size	Φ×w(mm) Φ80×70
2.04	平衡轮尺寸	additional wheels (dimensions)	Φ×w(mm) Φ115×55
2.05	驱动轮, 平衡轮/承载轮数量 (x=驱动轮)	Wheels, number front/rear (x = driven)	1x+1/4
2.06	轮距, 驱动端	Track width	b10 (mm) 522
2.07	轮距, 承载端	Track width	b11 (mm) 410/535
尺寸 Dimensions			
3.01	最低门架高度	Free lift	h1 (mm) 1995
3.02	自由提升高度	Lift	h2 (mm) 0
3.03	提升高度	Height of mast, extended	h3 (mm) 3000
3.04	门架最大高度	Height of seat/stand-on platform	h4 (mm) 3452
3.05	操作位置手柄杆最小/最大高度	Overall height(With handle)	h14 (mm) 700/1225
3.06	货叉最低高度	Lowered fork height	h13 (mm) 86
3.07	整车长度	Overall length	l1 (mm) 1740
3.08	车体长度	Length to fork face	l2 (mm) 590
3.09	整车宽度	Overall width	b1/ b2 (mm) 795
3.10	货叉尺寸	Fork dimensions	s/e/l (mm) 60/160/1150
3.11	货叉外宽	Width of forks	b5 (mm) 570/695
3.12	轴距中心处离地间隙	Min .Ground clearance	m2 (mm) 26
3.13	通道宽度:1000x1200托盘(1200跨货叉放置)	Aisle width with pallet 1000 x 1200 across forks	Ast (mm) 2245
3.14	通道宽度:800x1200托盘(1200沿货叉放置)	Aisle width with pallet 800 x 1200 along forks	Ast (mm) 2185
3.15	转弯半径	Min .Turning radius	Wa (mm) 1405
性能 Performance			
4.01	行走速度, 满载/空载	Travel speed, laden/unladen	(km/h) 4.0/4.2
4.02	提升速度, 满载/空载	Lifting speed, with/without load	(mm/s) 92/136
4.03	下降速度, 满载/空载	Lowering speed, with/without load	(mm/s) 112/98
4.04	最大爬坡度, 满载/空载	Maximum climbing ability, with/without load	(%) 3/10
4.05	制动类型	Service brake	电磁制动(Electromagnetic)
电机 Drive			
5.01	驱动电机功率	Drive motor, 60 minute rating	(kW) 0.75
5.02	起升电机功率	Lift motor rating at S3 15%	(kW) 2.2
5.03	蓄电池电压/容量	Battery voltage/rated capacity	(V/Ah) 2×12/100
5.04	电池重量(±5%)	Battery weight (±5%)	(kg) 2×27
其它 Other			
6.01	驱动控制类型	Type of drive control	直流速度控制 (DC)
6.02	噪音水平	Noise level at operator 's ear	(dB(A)) ≤70
6.03	转向类型	Type of steering	机械转向(Mechanical)



## 全电动托盘堆垛车(步行式)

Electric stacker (Pedestrian)

### 产品特性

- 1.侧驾驱动设计，有效减小作业通道，转弯半径小、视野更好,适合狭小空间作业。
- 2.操作手柄为步行式车辆加长设计，符合人体工程学原理,操作舒适。
- 3.钥匙开关，电量表，上升下降按钮，龟速开关都集成在操作手柄上，操作更简便。
- 4.外置式充电器,散热性能更佳，避免内置充电器在车辆运行时因震动带来的损坏。
- 5.德国原装进口防水微动开关，适应寒冷、潮湿、粉尘等各种恶劣环境。
- 6.永磁电机驱动系统，体积小、质量轻、损耗小、效率高。
- 7.安装高密度铁丝防护网，编焊而成，坚固耐用，防护效果优良。

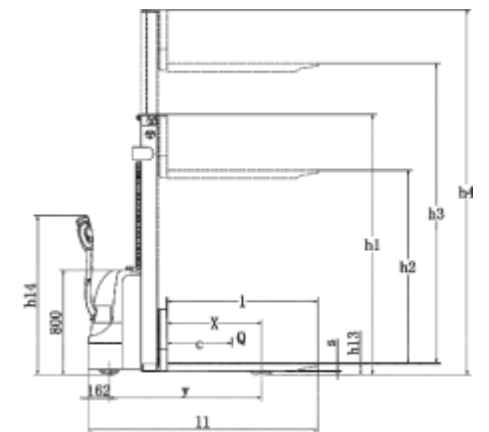
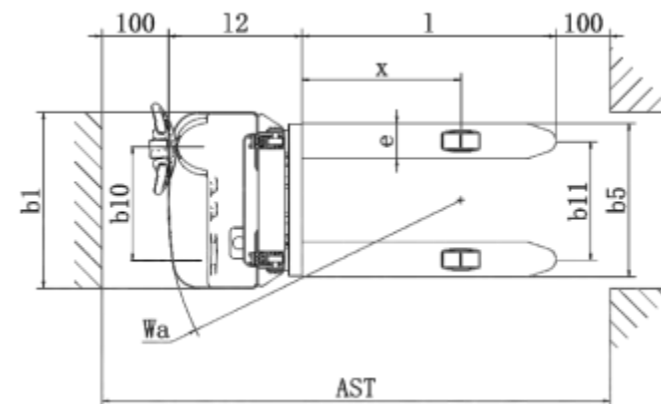
### Product Features

- 1.Side driving driver design, effectively reducing the work channel, small turning radius, better field of view, suitable for narrow space operations.
- 2.The operating handle is a walking vehicle, which is in line with the principle of ergonomics, and is comfortable.
- 3.Key switch, electric meter, up and down button, turtle speed switch are integrated in the operation handle, easy to operate.
- 4.External charger, heat dissipation performance, avoiding the damage caused by the built-in charger due to vibration when the vehicle is running.
- 5.Germany imported waterproof micro-power switch, adapt to cold, moist, dust, etc.
- 6.Permanent magnet motor drive system, small size, light quality, small loss, high efficiency.
- 7.Install high-density wire protective net, prepared, strong and durable, and excellent protection.



### 全电动托盘堆垛车(步行式)参数 Technical Data

特征 Characteristics				CL1030J	CL1016D
1.01	型号	Model		CL1030J	CL1016D
1.02	驱动方式	Power unit		电动(Electric)	
1.03	操作方式	Operation		步行式(Pedestrian)	
1.04	额定载荷能力	Rated traction weight	Q (t)	1	
1.05	载荷中心距	Load centre	c (mm)	600	
1.06	前悬距	Axle centre to fork face	x (mm)	780	
1.07	轴距	Wheel base	y (mm)	1230	1100
1.08	自重(含电瓶)	Service weight with battery	kg	465	406
轮子、底盘 Wheels/Tyres				聚氨酯 (PU)	
2.01	轮胎类型	Wheels type		聚氨酯 (PU)	
2.02	驱动轮尺寸	Driving wheel size	Φ×w(mm)	Φ210×70	
2.03	承载轮尺寸	Bearing wheel size	Φ×w(mm)	Φ80×70	
2.04	平衡轮尺寸	additional wheels (dimensions)	Φ×w(mm)	Φ150×58	
2.05	驱动轮, 平衡轮/承载轮数量 (x=驱动轮)	Wheels, number front/rear (x = driven)		1x+1/4	
2.06	轮距, 驱动端	Track width	b10 (mm)	516	
2.07	轮距, 承载端	Track width	b11 (mm)	410/535	
尺寸 Dimensions					
3.01	最低门架高度	Free lift	h1 (mm)	1995	1990
3.02	自由提升高度	Lift	h2 (mm)	0	1485
3.03	提升高度	Height of mast, extended	h3 (mm)	3000	1600
3.04	门架最大高度	Height of seat/stand-on platform	h4 (mm)	3452	2060
3.05	操作位置手柄杆最小/最大高度	Overall height(With handle)	h14 (mm)	870/1200	
3.06	货叉最低高度	Lowered fork height	h13 (mm)	86	
3.07	整车长度	Overall length	l1 (mm)	1755	1632
3.08	车体长度	Length to fork face	l2 (mm)	605	482
3.09	整车宽度	Overall width	b1/ b2 (mm)	795	
3.10	货叉尺寸	Fork dimensions	s/e/l (mm)	60/160/1150	
3.11	货叉外宽	Width of forks	b5 (mm)	570/695	
3.12	轴距中心处离地间隙	Min .Ground clearance	m2 (mm)	26	
3.13	通道宽度:1000x1200托盘(1200跨货叉放置)	Aisle width with pallet 1000 x 1200 across forks	Ast (mm)	2245	2120
3.14	通道宽度:800x1200托盘(1200沿货叉放置)	Aisle width with pallet 800 x 1200 along forks	Ast (mm)	2185	2060
3.15	转弯半径	Min .Turning radius	Wa (mm)	1405	1280
性能 Performance					
4.01	行走速度, 满载/空载	Travel speed, laden/unladen	(km/h)	4.0/4.2	
4.02	提升速度, 满载/空载	Lifting speed, with/without load	(mm/s)	92/136	
4.03	下降速度, 满载/空载	Lowering speed, with/without load	(mm/s)	112/98	
4.04	最大爬坡度, 满载/空载	Maximum climbing ability, with/without load	(%)	3/10	
4.05	制动类型	Service brake		电磁制动(Electromagnetic)	
电机 Drive					
5.01	驱动电机功率	Drive motor, 60 minute rating	(kW)	0.75	
5.02	起升电机功率	Lift motor rating at S3 15%	(kW)	2.2	
5.03	蓄电池电压/容量	Battery voltage/rated capacity	(V/Ah)	2×12/100	
5.04	电池重量(±5%)	Battery weight (±5%)	(kg)	2×27	
其它 Other					
6.01	驱动控制类型	Type of drive control		直流速度控制(DC)	
6.02	噪音水平	Noise level at operator 's ear	(dB(A))	≤70	
6.03	转向类型	Type of steering		机械转向(Mechanical)	





## 全电动托盘堆垛车(步行式) Electric stacker (Pedestrian)

### 产品特性

1. 功率强劲的交流电机, 加上采埃孚变速箱提供卓越的加速性能, 提高作业效率, 节省能源;
2. 德国原装进口防水微动开关, 适应寒冷、潮湿、粉尘等各种恶劣环境;
3. 门架采用了12#槽钢, 增加车体的强度, 保证了高位重载升降的平稳性;
4. 钥匙开关和电量表集成在操作手柄上, 操作更简便;
5. 操作手柄左右两侧均有上升下降按钮, 非常方便操作;
6. 操作手柄为步行式车辆加长设计, 符合人体工程学原理, 操作舒适;
7. 安装高密度铁丝防护网, 编焊而成, 坚固耐用, 防护效果优良。

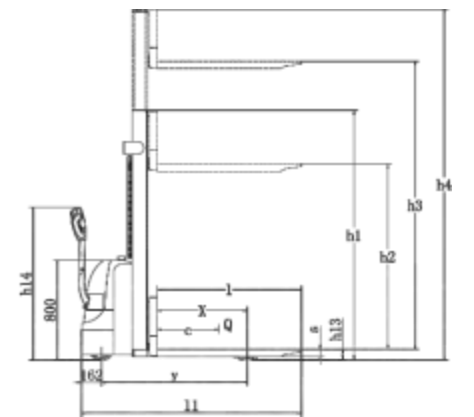
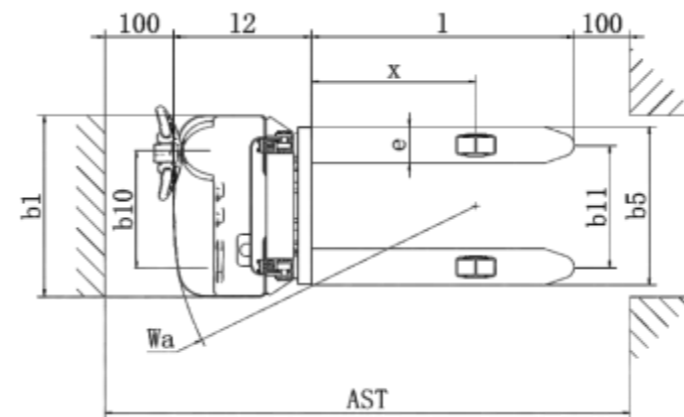
### Product Features

1. Strong power AC motor, plus the Effu gearbox to provide excellent acceleration performance, improve job efficiency, save energy;
2. Germany imported waterproof micro-power switch, adapt to cold, moist, dust and other harsh environments;
3. The door frame uses 12 # tank steel, increasing the strength of the vehicle body, ensuring the stability of high heavy load lifting;
4. Key switches and electricity tables are integrated on the operating handle and operate easier;
5. The operating handle has a rising drop button on both sides of the handle, which is very convenient;
6. The operating handle is a walking vehicle long design, which is in line with ergonomic principles, comfortable operation;
7. Install high-density wire protective net, prepared, strong and durable, excellent in protection.



### 全电动托盘堆垛车(步行式)参数 Technical Data

特征 Characteristics			
1.01	型号	Model	CL1630GE
1.02	驱动方式	Power unit	电动(Electric)
1.03	操作方式	Operation	步行式(Pedestrian)
1.04	额定载荷能力	Rated traction weight	Q (t) 1.6
1.05	载荷中心距	Load centre	c (mm) 600
1.06	前悬距	Axle centre to fork face	x (mm) 675
1.07	轴距	Wheel base	y (mm) 1118
1.08	自重(含电瓶)	Service weight with battery	kg 672
轮子、底盘 Wheels/Tyres			
2.01	轮胎类型	Wheels type	聚氨酯 (PU)
2.02	驱动轮尺寸	Driving wheel size	Φ×w(mm) Φ230×75
2.03	承载轮尺寸	Bearing wheel size	Φ×w(mm) Φ80×70
2.04	平衡轮尺寸	additional wheels (dimensions)	Φ×w(mm) Φ150×58
2.05	驱动轮, 平衡轮/承载轮数量 (x=驱动轮)	Wheels, number front/rear (x = driven)	1x+1/4
2.06	轮距, 驱动端	Track width	b10 (mm) 526
2.07	轮距, 承载端	Track width	b11 (mm) 390/515
尺寸 Dimensions			
3.01	最低门架高度	Free lift	h1 (mm) 1995
3.02	自由提升高度	Lift	h2 (mm) 0
3.03	提升高度	Height of mast, extended	h3 (mm) 3000
3.04	门架最大高度	Height of seat/stand-on platform	h4 (mm) 3452
3.05	操作位置手柄杆最小/最大高度	Overall height(With handle)	h14 (mm) 870/1200
3.06	货叉最低高度	Lowered fork height	h13 (mm) 86
3.07	整车长度	Overall length	l1 (mm) 1755
3.08	车体长度	Length to fork face	l2 (mm) 605
3.09	整车宽度	Overall width	b1/ b2 (mm) 795
3.10	货叉尺寸	Fork dimensions	s/e/l (mm) 60/180/1150
3.11	货叉外宽	Width of forks	b5 (mm) 570/695
3.12	轴距中心处离地间隙	Min .Ground clearance	m2 (mm) 26
3.13	通道宽度:1000x1200托盘(1200跨货叉放置)	Aisle width with pallet 1000 x 1200 across forks	Ast (mm) 2178
3.14	通道宽度:800x1200托盘(1200沿货叉放置)	Aisle width with pallet 800 x 1200 along forks	Ast (mm) 2156
3.15	转弯半径	Min .Turning radius	Wa (mm) 1295
性能 Performance			
4.01	行走速度, 满载/空载	Travel speed, laden/unladen	(km/h) 4.0/4.2
4.02	提升速度, 满载/空载	Lifting speed, with/without load	(mm/s) 92/136
4.03	下降速度, 满载/空载	Lowering speed, with/without load	(mm/s) 112/98
4.04	最大爬坡度, 满载/空载	Maximum climbing ability, with/without load	(%) 6/10
4.05	制动类型	Service brake	电磁制动(Electromagnetic)
电机 Drive			
5.01	驱动电机功率	Drive motor, 60 minute rating	(kW) 1.5
5.02	起升电机功率	Lift motor rating at S3 15%	(kW) 2.2
5.03	蓄电池电压/容量	Battery voltage/rated capacity	(V/Ah) 2×12/120
5.04	电池重量(±5%)	Battery weight (±5%)	(kg) 2×34
其它 Other			
6.01	驱动控制类型	Type of drive control	交流速度控制(AC)
6.02	噪音水平	Noise level at operator 's ear	(dB(A)) ≤70
6.03	转向类型	Type of steering	机械转向 (Mechanical steering)



## 全电动托盘堆垛车(步行式) Electric stacker (Pedestrian, with Straddle)

### 产品特性

1. 内外门架之间设置了加强筋, 确保负重升高时门架不往前倾, 整车稳定性更好;
2. 德国原装进口防水微动开关, 适应寒冷、潮湿、粉尘等各种恶劣环境;
3. 钥匙开关, 电量表, 上升下降按钮, 龟速开关都集成在操作手柄上, 操作更简便;
4. 操作手柄配置优质的气压式弹簧, 松开手柄, 自动缓慢复位, 经久耐用;
5. 操作手柄为步行式车辆加长设计, 符合人体工程学原理, 操作舒适;
6. 中置驱动设计, 有效防止驱动轮打滑;
7. 免维护的蓄电池无需借助其他工具就能更换, 更加便利;
8. 可调节的宽腿设计, 适合多种托盘尺寸, 更加稳定。

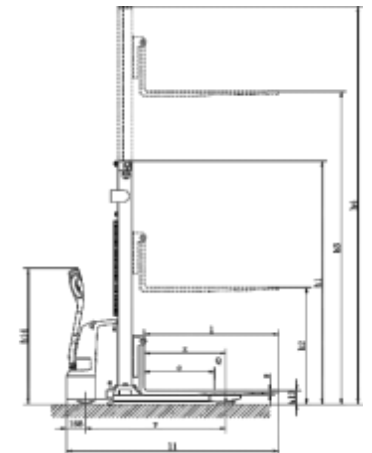
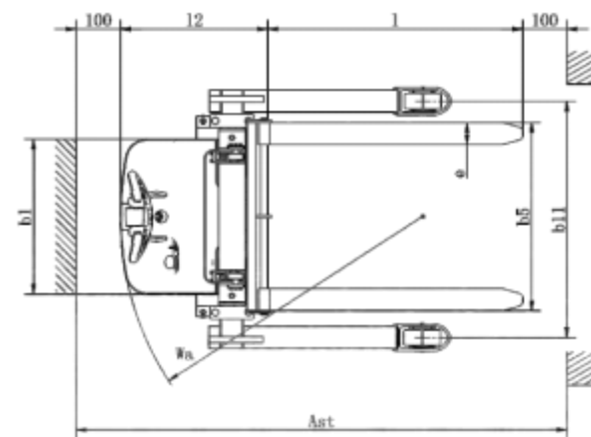
### Product Features

1. Setting up a reinforcing rib between the inside and outside portraits, ensuring that the door frame does not pour it forward, and the stability of the vehicle is better;
2. Germany imported waterproof micro-power switch, adapt to cold, moist, dust and other harsh environments;
3. Key switch, electric meter, up and down button, turtle speed switch are integrated in the operation handle, easy to operate;
4. Operate handles Configure high quality air pressure spring, loosen the handle, automatically reset, durable;
5. Operating handles are long-range vehicles, in line with ergonomic principles, comfortable operation;
6. The middle drive design effectively prevents the driving wheel from skidding;
7. Maintenance-free batteries do not need to be replaced with other tools, more convenient;
8. Adjustable wide leg design, suitable for a variety of pallet sizes, more stable.



### 全电动托盘堆垛车(步行式)参数 Technical Data

特征 Characteristics							
1.01	型号 Model		CL1316GHY	CL1320GHY	CL1325GHY	CL1330GHY	CL1335GHY
1.02	驱动方式 Power unit		电动(Electric)				
1.03	操作方式 Operation		步行式(Pedestrian)				
1.04	额定牵引能力 Rated traction weight	Q (t)	1.3				
1.05	载荷中心 Load centre	c (mm)	600				
1.06	前悬距 Axle centre to fork face	x (mm)	698				
1.07	轴距 Wheel base	y (mm)	1202				
1.08	自重(含电瓶) Service weight with battery	kg	618	634	646	658	670
轮子、底盘 Wheels/Tyres							
2.01	轮胎类型 Wheels type		聚氨酯(PU)				
2.02	驱动轮尺寸 Driving wheel size	Φ × w(mm)	Φ210 × 70				
2.03	承载轮尺寸 Bearing wheel size	Φ × w(mm)	Φ80 × 70				
2.04	驱动轮, 平衡轮/承载轮数量 (x=驱动轮) Wheels, number front/rear (x = driven)		1x+0/4				
2.05	轴距, 承载端 Track width	b11 (mm)	1024- 1424				
尺寸 Dimensions							
3.01	最低门架高度 Height of mast, lowered	h1 (mm)	2099	1580	1830	2080	2330
3.02	提升高度 Lift	h3 (mm)	1600	2000	2500	3000	3500
3.03	门架最大高度 Height of mast, extended	h4 (mm)	2099	2549	3049	3549	4049
3.04	操作位置手柄杆最小/最大高度 Overall height(With handle	h14 (mm)	680/1165				
3.05	货叉最低高度 lowered length	h13 (mm)	65				
3.06	整车长度 Overall length	l1 (mm)	1818				
3.07	车体长度 Length to fork face	l2 (mm)	668				
3.08	整车宽度 Overall width	b1/ b2 (mm)	1148- 1548				
3.09	货叉尺寸 Fork dimensions	s/e/l (mm)	35/100/1150				
3.10	货叉外宽 Width of forks	b5 (mm)	210-850				
3.11	轴距中心处离地间隙 Min .Ground clearance	m2 (mm)	26				
3.12	通道宽度: 1000x1200托盘(1200跨货叉放置) Aisle width with pallet 1000 x 1200 across forks	Ast (mm)	2240				
3.13	通道宽度: 800x1200托盘(1200沿货叉放置) Aisle width with pallet 800 x 1200 along forks	Ast (mm)	2210				
3.14	转弯半径 Min .Turning radius	Wa (mm)	1370				
性能 Performance							
4.01	行走速度, 满载/空载 Travel speed, laden/unladen	(km/h)	4.0/4.2				
4.02	提升速度, 满载/空载 Lifting speed, with/without load	(mm/s)	92/136				
4.03	下降速度, 满载/空载 Lowering speed, with/without load	(mm/s)	112/98				
4.04	最大爬坡度, 满载/空载 Maximum climbing ability, with/without load	(%)	3/8				
4.05	制动类型 Service brake		电磁制动(Electromagnetic )				
电机 Drive							
5.01	驱动电机功率 Drive motor, 60 minute rating	(kW)	0.75				
5.02	起升电机功率 Lift motor rating at S3 15%	(kW)	2.2				
5.03	蓄电池电压/容量 Battery voltage/rated capacity	(V/Ah)	2 × 12/ 100				
5.04	电池重量(± 5%) Battery weight ( ± 5%)	(kg)	2 × 27				
其它 Other							
6.01	驱动控制类型 Type of drive control		直流速度控制 (DC)				
6.02	噪音水平 Noise level at operator 's ear	(dB(A))	≤70				
6.03	转向类型 Type of steering		机械转向(Mechanical )				





# 全电动托盘堆垛车(步行式)

## Electric stacker (Pedestrian, with Straddle)

### 产品特性

1. 内外门架之间设置了加强筋，确保负重升高时门架不往前倾，整车稳定性更好；
2. 永磁电机驱动系统，体积小、质量轻、损耗小、效率高；
3. 德国原装进口防水微动开关，适应寒冷、潮湿、粉尘等各种恶劣环境；
4. 钥匙开关和电量表集成在操作手柄上，操作更简便；
5. LED电量表，绿、橙、红依次显示，操作者可以直观了解蓄电池剩余电量；
6. 操作手柄配置优质的气压式弹簧，松开手柄，自动缓慢复位，经久耐用；
7. 操作手柄加装龟速开关，速度控制更加精准；
8. 操作手柄左右两侧均有上升下降按钮，非常方便操作；
9. 虽为经济型堆垛车，仍然配置了大功率、高性能的提升泵站，货物起升平衡有力，价廉物美，物超所值；
10. 操作手柄为步行式车辆加长设计，符合人体工程学原理，操作舒适；
11. 侧驾驱动设计，有效减小作业通道，转弯半径小、视野更好，适合狭小空间作业；
12. 整车更为轻巧，因此整车耗电更低，节能环保；
13. 免维护的蓄电池无需借助其他工具就能更换，更加便利；
14. 支撑腿宽度可调节，适应各种工况。

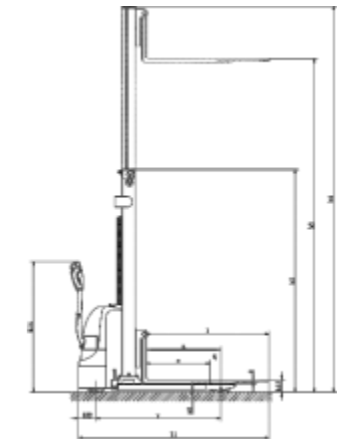
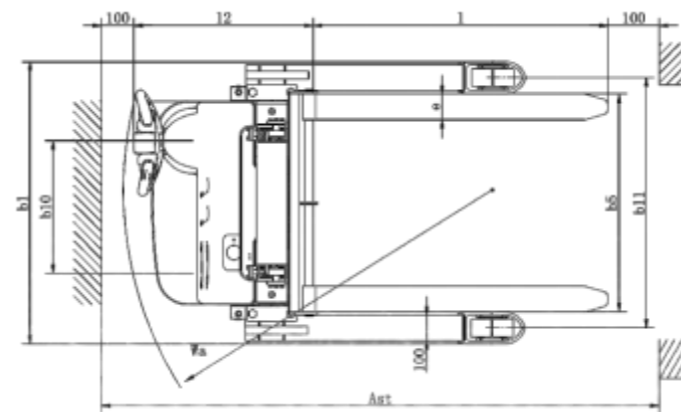
### Product Features

1. Setting up a reinforcing rib between the inside and outside portraits, ensuring that the door frame does not pour it forward, and the stability of the vehicle is better;
2. Permanent magnet motor drive system, small size, light quality, small loss, high efficiency;
3. Germany imported waterproof micro-power switch, adapt to cold, moist, dust and other harsh environments;
4. Key switches and power meter are integrated on the operating handle, and the operation is easier;
5. Led electricity meter, green, orange, red sequentially, the operator can intuitively understand the remaining power of the battery;
6. Operate handles Configure high quality air pressure spring, loosen the handle, automatically reset, durable;
7. Operating handle is adding turtle speed switches, speed control is more accurate;
8. Operating handles have an upside button on both sides of the handle, which is very convenient;
9. Although it is a budget, high-power, high-performance improvement pumping station, and the goods are balanced, cheap and beautiful, and value for money;
10. Operating handles are long-range vehicles, in line with ergonomic principles, comfortable operation;
11. Side driving driver design, effectively reducing job channels, small turn radius, better vision, suitable for narrow space operations;
12. The whole vehicle is more light, so the whole vehicle consumes lower power, energy saving and environmental protection;
13. Maintenance-free batteries do not need to be replaced with other tools, more convenient;
14. Supporting leg width adjustable, adapting to various conditions.



### 全电动托盘堆垛车(步行式)参数 Technical Data

特征 Characteristics			
1.01	型号	Model	CL1230JY
1.02	驱动方式	Power unit	电动(Electric)
1.03	操作方式	Operation	步行式(Pedestrian)
1.04	额定载荷能力	Rated traction weight	Q (t) 1.2
1.05	载荷中心距	Load centre	c (mm) 600
1.06	前悬距	Axle centre to fork face	x (mm) 823
1.07	轴距	Wheel base	y (mm) 1167
1.08	自重(含电瓶)	Service weight with battery	kg 630
轮子、底盘 Wheels/Tyres			
2.01	轮胎类型	Wheels type	聚氨酯 (PU)
2.02	驱动轮尺寸	Driving wheel size	Φ×w(mm) Φ210×70
2.03	承载轮尺寸	Bearing wheel size	Φ×w(mm) Φ80×70
2.04	平衡轮尺寸	additional wheels (dimensions)	Φ×w(mm) Φ150×58
2.05	驱动轮, 平衡轮/承载轮数量 (x=驱动轮)	Wheels, number front/rear (x = driven)	1x+1/4
2.06	轮距, 驱动端	Track width	b10 (mm) 465
2.07	轮距, 承载端	Track width	b11 (mm) 1024- 1424
尺寸 Dimensions			
3.01	最低门架高度	Height of mast, lowered	h1 (mm) 2080
3.02	自由提升高度	Free lift	h2 (mm) 0
3.03	提升高度	Lift	h3 (mm) 3000
3.04	门架最大高度	Height of mast, extended	h4 (mm) 3547
3.05	车腿内宽	Inside width between fixed legs	h11 (mm) 900- 1300
3.06	单根车腿宽度	Single fixed leg width	h12(mm) 124
3.07	操作位置手柄杆最小/最大高度	Overall height(With handle)	h14 (mm) 870/1200
3.08	货叉最低高度	Lowered fork height	h13 (mm) 65
3.09	整车长度	Overall length	l1 (mm) 1784
3.10	车体长度	Length to fork face	l2 (mm) 605
3.11	整车宽度	Overall width	b1/ b2 (mm) 1148- 1548
3.12	货叉尺寸	Fork dimensions	s/e/l (mm) 35/100/1150
3.13	货叉外宽	Width of forks	b5 (mm) 210-850
3.14	轴距中心处离地间隙	Min .Ground clearance	m2 (mm) 24
3.15	通道宽度:1000x1200托盘(1200跨货叉放置)	Aisle width with pallet 1000 x 1200 across forks	Ast (mm) 2216-2316
3.16	通道宽度:800x1200托盘(1200沿货叉放置)	Aisle width with pallet 800 x 1200 along forks	Ast (mm) 2180-2316
3.17	转弯半径	Min .Turning radius	Wa (mm) 1339
性能 Performance			
4.01	行走速度, 满载/空载	Travel speed, laden/unladen	(km/h) 4.0/4.2
4.02	提升速度, 满载/空载	Lifting speed, with/without load	(mm/s) 92/136
4.03	下降速度, 满载/空载	Lowering speed, with/without load	(mm/s) 112/98
4.04	最大爬坡度, 满载/空载	Maximum climbing ability, with/without load	(%) 3/8
4.05	制动类型	Service brake	电磁制动(Electromagnetic)
电机 Drive			
5.01	驱动电机功率	Drive motor, 60 minute rating	(kW) 0.75
5.02	起升电机功率	Lift motor rating at S3 15%	(kW) 2.2
5.03	蓄电池电压/容量	Battery voltage/rated capacity	(V/Ah) 2×12/100
5.04	电池重量(±5%)	Battery weight (±5%)	(kg) 2×27
其它 Other			
6.01	驱动控制类型	Type of drive control	直流速度控制 (DC)
6.02	噪音水平	Noise level at operator 's ear	(dB(A)) 69
6.03	转向类型	Type of steering	机械转向(Mechanical)





## SPN半电动托盘堆垛车

Semi-electric stacker (SPN series, Pedestrian)



### 产品特性

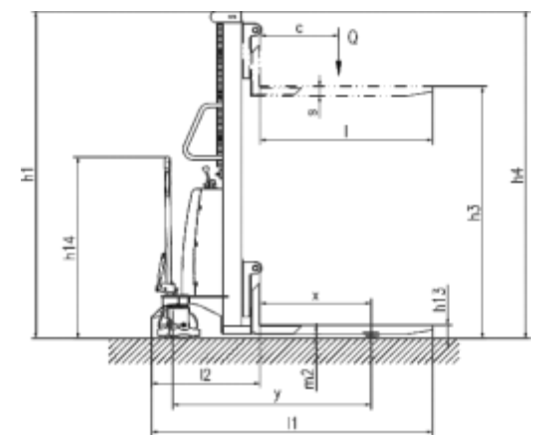
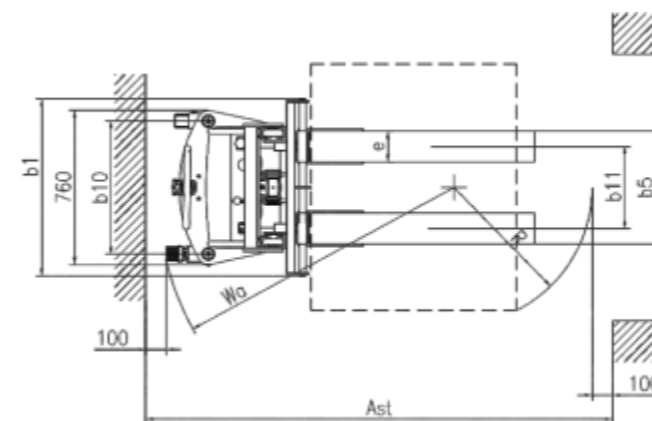
1. 液压动力单元结构紧凑，反应灵敏、动力强悍，可以根据用户需要调整升降速度，主要元器件均为国际知名品牌，系统稳定，使用寿命长。
2. 全系标配进口马达继电器，动作快、吸合能力强、工作稳定、使用寿命长。
3. 货叉后部设有调节螺栓，当长年使用或其他因素导致货叉轻微变形时，可以通过调节螺栓将两支货叉调整到水平状态。
4. 刹车直接作用在万向轮上，通过脚刹车操作，立即起到制动刹车的作用，刹车轻便快捷。
5. 重载车型内外门架之间设置了加强筋，确保负重升高时门架不往前倾，整车稳定性更好。

### Product Features

1. The hydraulic power unit has the advantages of compact structure, sensitive response and powerful power, which can adjust the lifting speed according to the needs of users. The main components are international well-known brands, and the system is stable and long in use.
2. Imported motor relay is equipped with standard system, with fast action, strong pulling ability, stable operation and long service life.
3. The back of the forks is provided with adjusting bolts. When the forks are slightly deformed due to years of use or other factors, the two forks can be adjusted to the horizontal state by adjusting bolts.
4. Brake directly on the universal wheel, through the foot brake operation, immediately play the role of brake brake, brake light and fast.
5. The stiffening bars are arranged between the inner and outer door frames of heavy-duty vehicles to ensure that the door frames do not lean forward when the load is increased, and the whole vehicle has better stability.

### SPN半电动托盘堆垛车参数 Technical Data

特征 Characteristics		Model							
1.01	型号	Model	SPN1016	SPN1030	SPN1516	SPN1530	SPN2016	SPN2020	
1.02	驱动方式	Power unit	电动(Electric)						
1.03	操作方式	Operation	手动(handle)						
1.04	额定载荷能力	Rated traction weight	Q (t)	1	1.5	2			
1.05	载荷中心距	Load centre	c (mm)	450					
1.06	前悬距	Axle centre to fork face	x (mm)	705	700	705	700	705	700
1.07	轴距	Wheel base	y (mm)	1190					
1.08	自重 (含电瓶)	Service weight with battery	kg	315	380	320	395	325	380
轮子、底盘 Wheels/Tyres									
2.01	轮胎类型	Wheels type	尼龙/聚氨酯 (nylon/polyurethane)						
2.02	驱动轮尺寸	Driving wheel size	Φ xw(mm)	Φ180 x 50					
2.03	承载轮尺寸	Bearing wheel size	Φ xw(mm)	Φ74 x 70					
2.04	平衡轮尺寸	Additional wheels (dimensions)	Φ xw(mm)	Φ180 x 50					
2.05	驱动轮, 平衡轮/承载轮数量 (x=驱动轮)	Wheels, number front/rear (x = driven)		1, 1/2					
2.06	轮距, 驱动端	Track width	b10 (mm)	648					
2.07	轮距, 承载端	Track width	b11 (mm)	390/490					
尺寸 Dimensions									
3.01	最低门架高度	Height of mast, lowered	h1 (mm)	2077	2077	2077	2077	2077	1577
3.02	提升高度	Lift	h3 (mm)	1600	3000	1600	3000	1600	2000
3.03	门架最大高度	Height of mast, extended	h4 (mm)	2077	3567	2077	3567	2077	2567
3.04	货叉最低高度	Fork Height, Lowered	h13 (mm)	85					
3.05	整车长度	Overall length	l1 (mm)	1600/1800					
3.06	车体长度	Length to fork face	l2 (mm)	700					
3.07	整车宽度	Overall width	b1/ b2 (mm)	760/964					
3.08	货叉尺寸	Fork dimensions	e/l (mm)	60/150/900/1100					
3.09	货叉外宽	Width of forks	b5 (mm)	550/640					
3.10	轴距中心处离地间隙	Min .Ground clearance	m2 (mm)	32					
3.11	通道宽度:1000x1200托盘(1200跨货叉放置)	Aisle width with pallet 1000 x 1200 across forks	Ast (mm)	2250					
3.12	通道宽度:800x1200托盘(1200沿货叉放置)	Aisle width with pallet 800 x 1200 along forks	Ast (mm)	2240					
3.13	转弯半径	Min .Turning radius	Wa (mm)	1350					
性能 Performance									
4.01	提升速度, 满载/空载	Lifting speed, with/without load	(mm/s)	80/145	65/145	60/145			
4.02	下降速度, 满载/空载	Lowering speed, with/without load	(mm/s)	90/100	60/100	60/100			
4.03	制动类型	Service brake		机械 (Machinery)					
电机 Drive									
5.01	起升电机功率	Lift motor rating at S3 15%	(kW)	1.6					
5.02	蓄电池电压/容量	Battery voltage/rated capacity	(V/Ah)	12/150					
5.03	电池重量(± 5%)	Battery weight ( ± 5%)	(kg)	36					
其它 Other									
6.01	噪音水平	Noise level at operator 's ear	(dB(A))	≤70					



## 自提升堆高车

Self-lifting electric stacker (SCDS series, Pedestrian)

### 产品特性

- 1.集搬运、堆垛、攀升为一体的多功能设备;
- 2.可自行登高进入车厢, 随车装卸货物, 货车司机的好帮手。
- 3.轻量化设计, 操作轻松舒适;
- 4.支腿配置摆动导向轮, 轻松推动车子进入车厢;
- 5.双联动油缸, 锁紧与升降交替运动。

### Product Features

1. Multi-functional equipment integrating handling, stacking and climbing;
2. Can climb into the carriage, loading and unloading with the car, truck driver's good helper;
3. Lightweight design, easy and comfortable to operate;
4. Support leg is equipped with swinging guide wheel, which can easily push the car into the carriage;
5. Double linkage cylinder, locking and lifting alternately.



### 自提升叉车参数 Technical Data

特征 Characteristics					
1.01	型号	Model	SCDS0511	SCDS0513	SCDS0515
1.02	额定载荷	Capacity	Q(Kg)	500	
1.03	载荷中心距	Load center	C(mm)	400	
1.04	提升方式	Type of lifting	电动 (Electric)		
1.05	操作方式	Operating type	手动(handle)		
1.06	材料	Material	尼龙/聚氨酯 (Nylon/PU)		
1.07	轴距	Wheelbase	y(mm)	850	
1.08	自重	Net weight	Kg	195	215 235
轮子、底盘 Wheels/Tyres					
2.01	前轮距	Front wheelbase	W1(mm)	380	
2.02	后轮距	Back wheelbase	b10(mm)	672	
2.03	转向轮/承重轮/平衡轮 数量	Quantity of Steering/Bearing/Balance Wheel	2/2/6		
2.04	承重轮尺寸	Bearing wheel size	mm	Φ80×50	
2.05	转向轮尺寸	Steering wheel size	mm	Φ100×50	
2.06	平衡轮尺寸	Balance wheel size	mm	Φ40×30	
2.07	辅助平衡轮尺寸	Training wheel size	mm	Φ30×30	
尺寸 Dimensions					
3.01	货叉离地最低高度	Min.fork height	mm	90	
3.02	货叉起升后最高高度	Max.fork height	h3(mm)	1100	1300 1500
3.03	货叉外侧宽度	Fork outside width	W3(mm)	540	
3.04	货叉内侧宽度	Fork inside width	mm	220	
3.05	货叉工作长度	Fork length	L(mm)	1150	
3.06	单边货叉尺寸	Single fork size	e/s(mm)	160X60	
3.07	整车长度	Overall length	L1(mm)	1555	
3.08	整车宽度	Overall width	W(mm)	790	
3.09	整车高度 (货叉降低时)	Overall height	H1(mm)	1417	1617 1817
3.10	门架起升后整车高度	Whole height(after tape file shelf)	H4(mm)	2670	2870 3070
3.11	最小转弯半径	Min.turning radius	Wa(mm)	1120	
性能 Performance					
4.01	最大起升速度 (满载/空载)	Lifting speed(laden/unladen)	mm/s	70/100	
4.02	最大下降速度 (满载/空载)	Lowering speed(laden/unladen)	mm/s	100/80	
4.03	起升电机	Lift motor	V/Kw	12/0.8	
电机 Drive					
5.01	蓄电池容量	Battery capacity	V/Ah	12/33	
5.02	电池重量(±5%)	Battery weight(±5%)	Kg	10	

