

座驾式大前移

Electric reach truck (Seated on)

产品特性

- 1.采用优质的门架槽钢，提高门架的使用寿命和出色的稳定性；
- 2.宽敞舒适的驾驶室和可调节式座椅，更加体现了本车的人性化设计；
- 3.采用双电控控制，货物的提升和叉车的行驶都可实现无级调速；
- 4.宽大而坚固的叉车底盘，超大高强度承载轮设计，确保整车足够的稳定性；
- 5.高位限速设置，当货叉上升到一定高度时，车辆行驶速度会自动下降，确保高空作业的安全；
- 6.电子助力转向系统，使转向灵活轻便；弯道自动减速功能，行驶更安全；
- 7.前双轮采用液压制动，驱动电机的制动由电控系统进行控制，使叉车的启动、行驶和制动更加有效；
- 8.液压系统防爆设计，即使油管爆裂，门架也不会快速下降，提高安全性；
- 9.座椅盖板及后盖的铰接设计，便于零部件的检测、维修及更换；
- 10.控制器带自我诊断功能，手持单元与控制器联接后可显示故障代码，迅速精准排查故障。

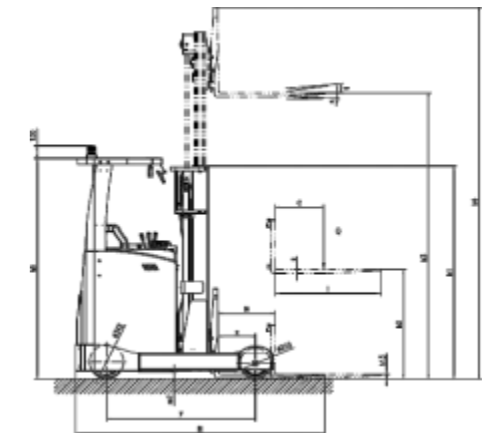
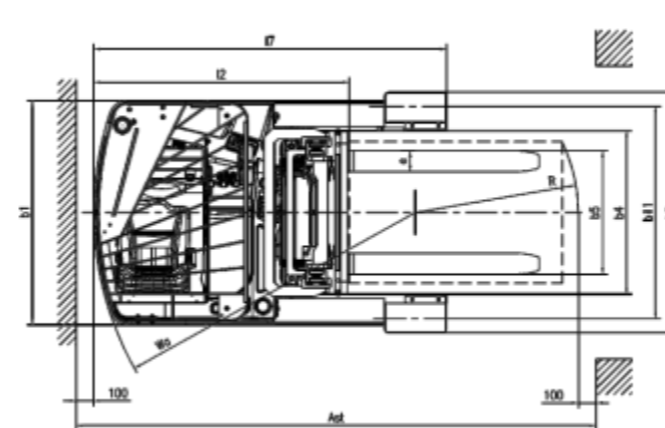
Product Features

- 1.Adopt high quality channel steel to improve the service life and excellent stability of the frame;
- 2.Wide and comfortable cab and adjustable seat, more reflects the humanized design of the car;
- 3.Adopt double electric control, the lifting of goods and the driving of forklift can realize stepless speed regulation;
- 4.Wide and strong forklift chassis, large and high strength bearing wheel design, to ensure sufficient stability of the vehicle;
- 5.High speed limit setting, when the fork is lifted to a certain height, the vehicle speed will automatically decrease, to ensure the safety of high-altitude operation;
- 6.Electronic power steering system, make the steering flexible and light; Automatic deceleration function at corners, safer driving;
- 7.The front two wheels adopt hydraulic braking, and the braking of the driving motor is controlled by the electric control system, which makes the start, running and braking of the forklift more effective
- 8.Hydraulic system explosion-proof design, even if the pipe burst, the door frame will not drop quickly, improve safety;
- 9.The hinged design of seat cover and back cover facilitates the detection, maintenance and replacement of components;
- 10.The controller has self-diagnosis function, the fault code can be displayed after the hand-held unit is connected with the controller, and the fault can be checked quickly and accurately.



座驾式大前移参数 Technical Data

特征 Characteristics				
1.01	型号	Model		QGB20S
1.02	驱动方式	Power unit		电动(Electric)
1.03	操作方式	Operation		座驾式(Seated-on)
1.04	额定载荷能力	Rated traction weight	Q (t)	2.0
1.05	载荷中心距	Load centre	c (mm)	500
1.06	前悬距	Axle centre to fork face	x (mm)	372
1.07	轴距	Wheel base	y (mm)	1500
1.08	自重(含电瓶)	Service weight with battery	kg	2880
轮子、底盘 Wheels/Tyres				
2.01	轮胎类型	Wheels type		聚氨酯(PU)
2.02	驱动轮尺寸	Driving wheel size	Φ×w(mm)	Φ343×130
2.03	承载轮尺寸	Bearing wheel size	Φ×w(mm)	Φ310×135
2.04	驱动轮, 平衡轮/承载轮数量 (x=驱动轮)	Wheels, number front/rear (x = driven)		1,2
2.05	轮距, 承载端	Track width	b11 (mm)	1199
尺寸 Dimensions				
3.01	门架/货叉倾斜 前倾/后倾	Mast/fork carriage tilt, forward/backward	a/b (°)	3/5
3.02	最低门架高度	Height of mast, lowered	h1 (mm)	2190
3.03	提升高度	Lift	h3 (mm)	3000
3.04	门架最大高度	Height of mast, extended	h4 (mm)	3880
3.05	顶罩高度(驾驶室)	Height of overhead guard (cabin)	h6 (mm)	2380
3.06	货叉最低高度	Fork Height, Lowered	h13 (mm)	45
3.07	整车长度	Overall length	l1 (mm)	2508
3.08	车体长度	Length to fork face	l2 (mm)	1438
3.09	整车宽度	Overall width	b1/ b2 (mm)	1270/1360
3.10	货叉尺寸	Fork dimensions	s/e/l (mm)	40/120/1070
3.11	货叉外宽	Width of forks	b5 (mm)	825
3.12	支撑臂和载重面间距离	Distance Between Support arms/loading surfaces	b4 (mm)	922
3.13	前移距离	Reach distance	l4(mm)	570
3.14	轴距中心处离地间隙	Min .Ground clearance	m2 (mm)	72
3.15	通道宽度:1000x1200托盘(1200跨货叉放置)	Aisle width with pallet 1000 x 1200 across forks	Ast (mm)	2900
3.16	通道宽度:800x1200托盘(1200沿货叉放置)	Aisle width with pallet 800 x 1200 along forks	Ast (mm)	2950
3.17	转弯半径	Min .Turning radius	Wa (mm)	1820
3.18	跨轮臂长度	Length across wheel arms	l7 (mm)	1987
性能 Performance				
4.01	行走速度, 满载/空载	Travel speed, laden/unladen	(km/h)	9/9.5
4.02	提升速度, 满载/空载	Lifting speed, with/without load	(mm/s)	240/300
4.03	下降速度, 满载/空载	Lowering speed, with/without load	(mm/s)	290/300
4.04	前移速度, 满载/空载	Reach speed, laden/unladen	(mm/s)	72/70
4.05	最大爬坡度 满载/空载	Maximum climbing ability, with/without load	(%)	10/15
4.06	制动类型	Service brake		电磁+液压(electromagnetism+hydraulic pressure)
电机 Drive				
5.01	驱动电机功率	Drive motor, 60 minute rating	(kW)	6
5.02	起升电机功率	Lift motor rating at S3 15%	(kW)	11
5.03	蓄电池电压/容量	Battery voltage/rated capacity	(V/Ah)	48/420
5.04	电池重量(± 5%)	Battery weight (± 5%)	(kg)	700
其它 Other				
6.01	驱动控制类型	Type of drive control		交流速度控制(AC)
6.02	噪音水平	Noise level at operator 's ear	(dB(A))	≤75



前移式电动叉车(大前移) Electric reach truck (Standing on)

产品特性

1. 控制器带自我诊断功能，手持单元与控制器连接后可显示故障代码，迅速精准排查故障；
2. 前轮采用大轮设计，整车底盘得以提高，驱动轮两侧设的辅助轮，又为底盘提供了安全辅助，使得整车既有很强的过障碍能力，又不失稳定性，操作更加灵活；
3. 踏板上脚踏开关，起到控制车辆运行的作用，只有在踩下脚踏开关后，才可以操作车辆，反之则车辆停止运行，该设计提高了整车的性能；
4. 驾驶位侧面配有靠背，同时上面罩上配有方便操作人员架手的靠手垫，这两个设计很大程度上提高了驾驶员的操作舒适度；
5. 一体成型的优质锻造货叉，设置了前倾后倾功能，挂钩式设计，方便向左右两侧调整宽度，确保操作者对货物的精准堆放。

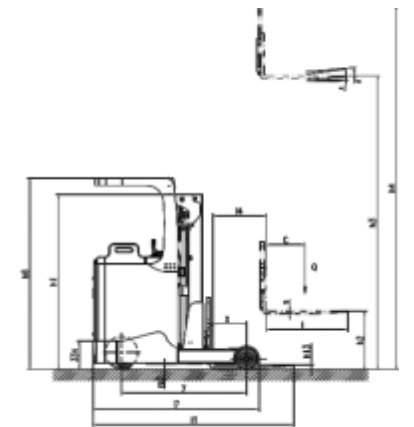
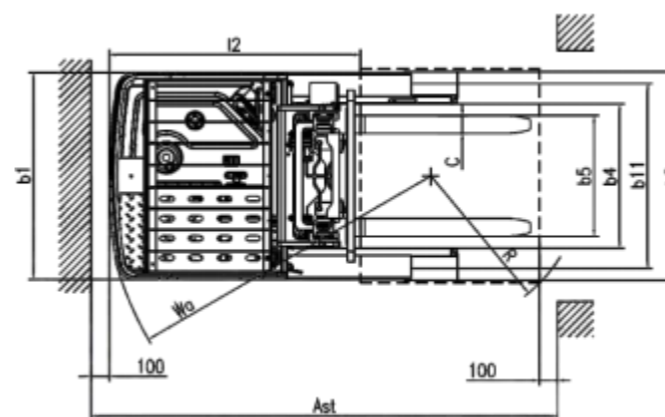
Product Features

1. Controller belt self-diagnostic function, the handheld unit can be displayed after the controller is coupled to the fault code, and quickly accurately troubleshoot;
2. The front wheel uses a large wheel design, the vehicle chassis is extracted, the secondary wheel on both sides of the drive wheel provides a safe aid for the chassis, making the whole vehicle have both strong obstacles, and no stability. More flexible operation;
3. The pedal foot switch plans to control the operation of the vehicle, only after the pedal switch is stepped on, it can operate the vehicle, and vice versa, the vehicle stops running, the design improves the safety of the whole vehicle;
4. The side of the driving position is equipped with a backrest, and the upper cover is equipped with a cushion of the operator's handler. These two design greatly improve the driver's operation comfort;
5. Integrated high-quality forging forks, set the preceding tilting function, hook design, convenient to adjust the width to the left and right sides to ensure the accurate stack of the operator .



前移式电动叉车(大前移)参数 Technical Data

特征 Characteristics					
1.01	型号	Model	Q1530GB	Q1545GB	Q1572GB
1.02	驱动方式	Power unit	电动(Electric)		
1.03	操作方式	Operation	站驾式(Standing on)		
1.04	额定载荷能力	Rated traction weight	Q (t)	1.5	
1.05	载荷中心	Load centre	c (mm)	500	
1.06	前悬距	Axle centre to fork face	x (mm)	395	
1.07	轴距	Wheel base	y (mm)	1460	
1.08	自重(含电瓶)	Service weight with battery	kg	2850	3390 3740
轮子、底盘 Wheels/Tyres					
2.01	轮胎类型	Wheels type	聚氨酯 (PU)		
2.02	驱动轮尺寸	Driving wheel size	Φ×w(mm)	Φ343×130	
2.03	承载轮尺寸	Bearing wheel size	Φ×w(mm)	Φ250×120	
2.04	平衡轮尺寸	Additional wheels (dimensions)	Φ×w(mm)	Φ178×73	
2.05	驱动轮, 平衡轮/承载轮数量 (x=驱动轮)	Wheels, number front/rear (x = driven)		1, 2/2	
2.06	轮距, 驱动端	Track width	b10 (mm)	660	
2.07	轮距, 承载端	Track width	b11 (mm)	1038	
尺寸 Dimensions					
3.01	门架/货叉倾斜 前倾/后倾	Mast/fork carriage tilt, forward/backward	a/b (°)	3/5	
3.02	最低门架高度	Height of mast, lowered	h1 (mm)	2044	2165 3065
3.03	自由提升高度	Free lift	h2 (mm)	0	1320 2220
3.04	提升高度	Lift	h3 (mm)	3000	4500 7200
3.05	门架最大高度	Height of mast, extended	h4 (mm)	3840	5340 8040
3.06	操作位置手柄杆最小/最大高度	Overall height(With handle)	h14 (mm)	2240	
3.07	货叉最低高度	Fork Height, Lowered	h13 (mm)	35	
3.08	整车长度(货叉长度)	Overall length	l1 (mm)	2350	
3.09	车体长度	Length to fork face (fork length)	l2 (mm)	1400	
3.10	整车宽度	Overall width	b1/ b2 (mm)	1168/1158	
3.11	货叉尺寸	Fork dimensions	s/e/l (mm)	35/100/950	
3.12	货叉外宽	Width of forks	b5 (mm)	200-775	
3.13	支撑臂和载重面间距离	Distance Between Supports arms/loading surfaces	b4 (mm)	808	
3.14	前移距离	Reach distance	l4(mm)	570	
3.15	轴距中心处离地间隙	Min .Ground clearance	m2 (mm)	56	
3.16	通道宽度:1000x1200托盘(1200跨货叉放置)	Aisle width with pallet 1000 x 1200 across forks	Ast (mm)	2890	2900 2900
3.17	通道宽度:800x1200托盘(1200沿货叉放置)	Aisle width with pallet 800 x 1200 along forks	Ast (mm)	2940	
3.18	转弯半径	Min .Turning radius	Wa (mm)	1830	
3.19	跨轮臂长度	Length across wheel arms	l7 (mm)	1940	
性能 Performance					
4.01	行走速度, 满载/空载	Travel speed, laden/unladen	(km/h)	8.5/9	
4.02	提升速度, 满载/空载	Lifting speed, with/without load	(mm/s)	150/480	120/220 120/220
4.03	下降速度, 满载/空载	Lowering speed, with/without load	(mm/s)	300/340	220/190 220/190
4.04	前移速度, 满载/空载	Reach speed, laden/unladen	(mm/s)	83/81	
4.05	最大爬坡度, 满载/空载	Maximum climbing ability, with/without load	(%)	10/15	
4.06	制动类型	Service brake		电磁制动(Electromagnetic)	
电机 Drive					
5.01	驱动电机功率	Drive motor, 60 minute rating	(kW)	6	
5.02	起升电机功率	Lift motor rating at S3 15%	(kW)	7.7	
5.03	蓄电池电压/容量	Battery voltage/rated capacity	(V/Ah)	48/420	
5.04	电池重量(± 5%)	Battery weight (± 5%)	(kg)	700	
其它 Other					
6.01	驱动控制类型	Type of drive control		交流速度控制(AC)	
6.02	噪音水平	Noise level at operator 's ear	(dB(A))	≤70	



货叉前移式叉车

Electric reach truck (Retractable forks, Seated on)

产品特性

1. 原装进口的CURTIS交流控制器，大功率驱动，高频、高效、安静，具有无级调速及反接制动功能。完善的温度保护和补偿功能实现热保护和稳定输出；
2. 驱动标配电子助力转向系统，转向更加轻松、操控更加灵活精准，降低操作者的劳动强度,弯道转弯自动限速，行驶更加安全；
3. 操作台配有智能显示屏，可实时显示驱动轮的转动方向和转动角度，同时还可以报告叉车故障代码；
4. 开放式电池设计，电瓶可从侧面拉出，有利电瓶的互换和维修；
5. 液压系统防爆设计，即使油管爆破，门架也不会快速下降，提高安全性；
6. 选用智能化的集成控制手柄，操作方便舒适。

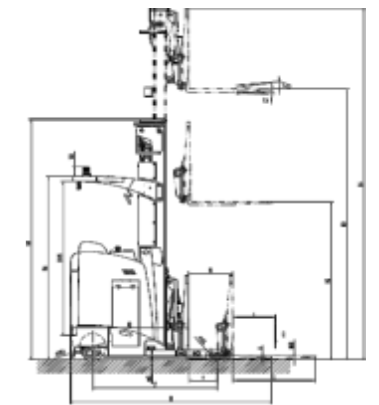
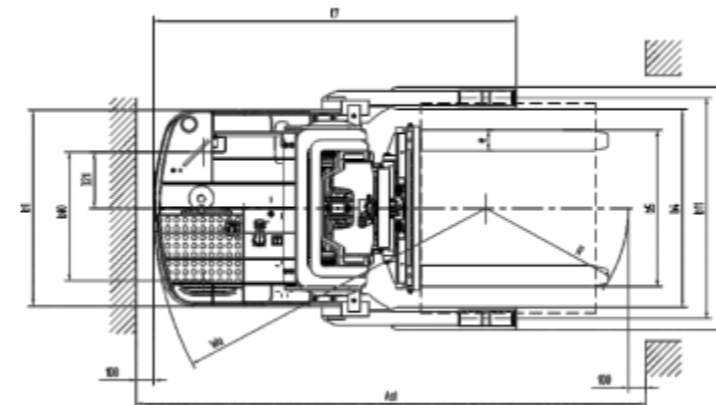
Product Features

1. CURTIS AC controller, high power drive, high frequency, high efficiency, quiet, stepless speed regulation and reverse braking function. Perfect temperature protection and compensation function to achieve thermal protection and stable output;
2. Drive standard electronic power steering system, steering more easy, more flexible and accurate control, reduce the operator's labor intensity, turn automatic speed limit, driving more safe;
3. The operating platform is equipped with intelligent display frequency, which can display the rotation direction and rotation Angle of the driving wheel in real time, and also report the forklift failure code;
4. Open battery design, battery can be pulled out from the side, convenient battery exchange and maintenance;
5. Hydraulic system explosion-proof design, even if the oil pipe burst, the door frame will not drop quickly, improve safety;
6. Select intelligent integrated control handle, easy to operate and comfortable.



货叉前移式叉车参数 Technical Data

特征 Characteristics			
1.01	型号	Model	QGB1850X
1.02	驱动方式	Power unit	电动(Electric)
1.03	操作方式	Operation	站驾式(Seated on)
1.04	额定载荷能力	Rated traction weight	Q (kg) 1.8
1.05	载荷中心距	Load centre	c (mm) 500
1.06	前悬距	Axle centre to fork face	x (mm) 375
1.07	轴距	Wheel base	y (mm) 1618
1.08	自重 (含电瓶)	Service weight with battery	kg 3670
轮子、底盘 Wheels/Tyres			
2.01	轮胎类型	Wheels type	聚氨酯(PU)
2.02	前轮规格	Driving wheel size	Φ×w(mm) Φ343×132
2.03	后轮规格	Bearing wheel size	Φ×w(mm) Φ125×82
2.04	轮数量, 前轮/后轮 (x=驱动轮)	Wheels, number front/rear (x = driven)	1x,2/4
2.05	前轮轮距	Track width	b10 (mm) 735
2.06	后轮轮距	Track width	b11 (mm) 1260
尺寸 Dimensions			
3.01	门架/货叉倾斜 前倾/后倾	Mast/fork carriage tilt, forward/backward	a/b (°) 2/4
3.02	最低门架高度	Height of mast, lowered	h1 (mm) 2449
3.03	自由提升高度	Free lift	h2 (mm) 1350
3.04	提升高度	Lift	h3 (mm) 5000
3.05	门架最大高度	Height of mast, extended	h4 (mm) 6120
3.06	顶罩高度 (驾驶室)	Height of overhead guard (cabin)	h6 (mm) 2386
3.07	货叉最低高度	Fork Height, Lowered	h13 (mm) 50
3.08	整车长度	Overall length	l1 (mm) 2597
3.09	车体长度	Length to fork face	l2 (mm) 1527
3.10	整车宽度	Overall width	b1/ b2 (mm) 1120/1390
3.11	货叉尺寸	Fork dimensions	s/e/l (mm) 40/120/1070
3.12	货叉外宽	Width of forks	b5 (mm) 890
3.13	支撑臂和载重面间距离	Distance Between Support arms/loading surfaces	b4 (mm) 1130
3.14	前移距离	Reach distance	l4(mm) 570
3.15	轴距中心处离地间隙	Min .Ground clearance	m2 (mm) 46
3.16	通道宽度:1000x1200托盘(1200跨货叉放置)	Aisle width with pallet 1000 x 1200 across forks	Ast (mm) 2970
3.17	通道宽度:800x1200托盘(1200沿货叉放置)	Aisle width with pallet 800 x 1200 along forks	Ast (mm) 3020
3.18	转弯半径	Min .Turning radius	Wa (mm) 1905
3.19	车体长度	Length across wheel arms	l7 (mm) 2074
性能 Performance			
4.01	行走速度, 满载/空载	Travel speed, laden/unladen	9/9.5
4.02	提升速度, 满载/空载	Lifting speed, with/without load	(km/h) 190/240
4.03	下降速度, 满载/空载	Lowering speed, with/without load	(mm/s) 300/340
4.04	前移速度, 满载/空载	Reach speed, laden/unladen	(mm/s) 100/110
4.05	最大爬坡度 满载/空载	Maximum climbing ability, with/without load	(%) 6/10
4.06	制动类型	Service brake	电磁制动(Electromagnetic)
电机 Drive			
5.01	驱动电机功率	Drive motor, 60 minute rating	(kW) 6
5.02	起升电机功率	Lift motor rating at S3 15%	(kW) 11
5.03	蓄电池电压/容量	Battery voltage/rated capacity	(V/Ah) 48/420
5.04	电池重量(± 5%)	Type of drive control	700
其它 Other			
6.01	驱动控制类型	Type of drive control	交流速度控制(AC)
6.02	噪音水平	Noise level at operator 's ear	(dB(A)) ≤75



前移式堆垛车

Electric reach truck (Standing on)

产品特性

1. 弯道转弯自动限速，行驶更加安全；
2. 液压系统防爆设计，即使油管爆破，门架也不会快速下降，提高安全性；
3. 操作台配有智能显示屏，可实时显示驱动轮的转动方向和转动角度，同时还可以报告叉车故障代码；
4. 弯道转弯自动限速，行驶更加安全；
5. 脚踏式安全开关，防止行走误操作；
6. 驱动标配电子助力转向系统，转向更加轻松、操控更加灵活精准，降低操作者的劳动强度；
7. 标配起升电限位功能，当货叉升至顶部时，系统自动切断上行电源，平稳停车，有效防止“冒顶”事故的发生；同时也能减少能量浪费，延长液压系统及相关部件寿命；
8. 拇指式加速开关操纵方式，操控轻便自如；整车小巧、通道宽度更小，穿梭于各种狭窄的小仓库。

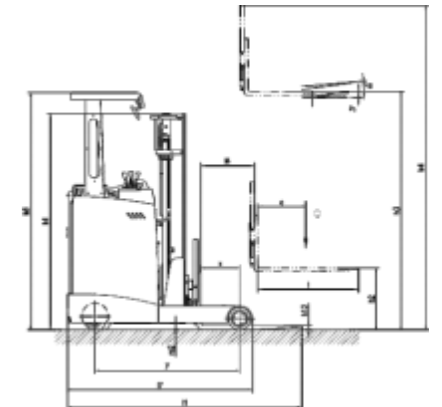
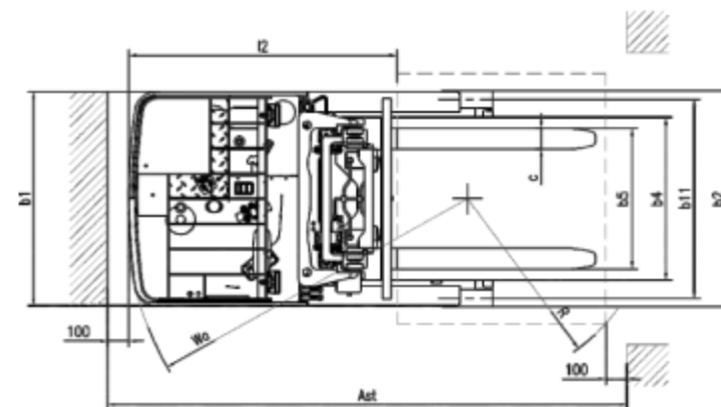
Product Features

1. Automatic speed limit on curves makes driving safer;
2. Hydraulic system explosion-proof design, even if the oil pipe blasting, the door frame will not drop quickly, improve safety;
3. The operating platform is equipped with intelligent display frequency, which can display the rotation direction and rotation Angle of the driving wheel in realtime, and also report the forklift failure code;
4. Automatic speed limit on curves makes driving safer;
5. Pedal type safety switch to prevent misoperation of walking;
6. Drive standard electronic power steering system, steering more easy, more flexible and accurate control, reduce the operator's labor intensity;
7. It is equipped with the function of lifting limit. When the fork rises to the top, the system will automatically cut off the uplink power supply and stop smoothly to effectively prevent the occurrence of "roof falling" accidents. At the same time can reduce energy waste, prolong the life of hydraulic system and related components;
8. Thumb type acceleration switch operation mode, easy to operate;The whole vehicle is compact, the channel width is smaller, shuttle in each kind of narrow small warehouse.



前移式堆垛车参数 Technical Data

特征 Characteristics			
1.01	型号	Model	QGB15E
1.02	驱动方式	Power unit	电动(Electric)
1.03	操作方式	Operation	站驾式(Seated-on)
1.04	额定载荷能力	Rated traction weight	Q (kg) 1500
1.05	载荷中心	Load centre	c (mm) 500
1.06	前悬距	Axle centre to fork face	x (mm) 372
1.07	轴距	Wheel base	y (mm) 1500
1.08	自重 (含电瓶)	Service weight with battery	kg 2250
轮子、底盘 Wheels/Tyres			
2.01	轮胎类型	Wheels type	聚氨酯(PU)
2.02	驱动轮尺寸	Driving wheel size	Φ×w(mm) Φ250×75
2.03	承载轮尺寸	Bearing wheel size	Φ×w(mm) Φ210×70
2.04	驱动轮, 平衡轮/承载轮数量 (x=驱动轮)	Wheels, number front/rear (x = driven)	1x,2
2.05	轮距, 承载端	Track width	b11 (mm) 956
尺寸 Dimensions			
3.01	门架/货叉倾斜 前倾/后倾	Mast/fork carriage tilt, forward/backward	a/b(°) 3/5
3.02	最低门架高度	Height of mast, lowered	h1 (mm) 2043
3.03	提升高度门架	Lift	h3 (mm) 3000
3.04	最大高度	Height of mast, extended	h4 (mm) 3885
3.05	顶罩高度 (驾驶室)	Height of overhead guard (cabin)	h6 (mm) 2240
3.06	货叉最低高度	Fork Height, Lowered	h13 (mm) 45
3.07	整车长度	Overall length	l1 (mm) 2260
3.08	车体长度	Length to fork face	l2 (mm) 1270
3.09	整车宽度	Overall width	b1/ b2 (mm) 1036
3.10	货叉尺寸	Fork dimensions	s/e/l (mm) 35/100/950
3.11	货叉外宽	Width of forks	b5 (mm) 110-760
3.12	支撑臂和载重面间距离	Distance Between Support arms/loading surfaces	b4 (mm) 782
3.13	前移距离	Reach distance	l4(mm) 510
3.14	轴距中心处离地间隙	Min .Ground clearance	m2 (mm) 59
3.15	通道宽度:1000x1200托盘(1200跨货叉放置)	Aisle width with pallet 1000 x 1200 across forks	Ast (mm) 2745
3.16	通道宽度:800x1200托盘(1200沿货叉放置)	Aisle width with pallet 800 x 1200 along forks	Ast (mm) 2790
3.17	转弯半径	Min .Turning radius	Wa (mm) 1700
3.18	跨轮臂长度	length across wheel arms	l7 (mm) 1745
性能 Performance			
4.01	行走速度, 满载/空载	Travel speed ,laden/unladen	7/7.5
4.02	提升速度, 满载/空载	Lifting speed, with/without load	(km/h) 110/170
4.03	下降速度, 满载/空载	Lowering speed, with/without load	(mm/s) 150/140
4.04	前移速度, 满载/空载	Reach speed, laden/unladen	(mm/s) 70/75
4.05	最大爬坡度, 满载/空载	Maximum climbing ability, with/without load	(mm/s) 6/8
4.06	制动类型	Service brake	(%) 电磁制动(Electromagnetic)
电机 Drive			
5.01	驱动电机功率	Drive motor, 60 minute rating	(kW) 3
5.02	起升电机功率	Lift motor rating at S3 15%	(kW) 3
5.03	蓄电池电压/容量	Battery voltage/rated capacity	(V/Ah) 24V/270
5.04	电池重量(± 5%)	Battery weight (± 5%)	(kg) 260
其它 Other			
6.01	驱动控制类型	Type of drive control	交流速度控制(AC)
6.02	噪音水平	Noise level at operator 's ear	dB(A)) ≤75



前移式电动叉车(小前移) Electric reach stacker (Standing on)

产品特性

- 1.进口交流控制器,德国ZF立式齿轮箱;
- 2.带自我诊断功能,手持单元与控制器联接后可显示故障代码,迅速精准排查故障;
- 3.可以选配全自由提升配置,方便车辆在集装箱内或其他顶棚高度有限制的环境下作业;
- 4.前轮采用大轮设计,整车底盘得以提高,驱动轮两侧设的辅助轮,又为底盘提供了安全辅助,使得整车既有很强的过障碍能力,又不失稳定性,操作更加灵活;
- 5.标配起升电限位功能,当货叉升至顶部时,系统自动切断上行电源,平稳停车,有效防止“冲顶”事故的发生。

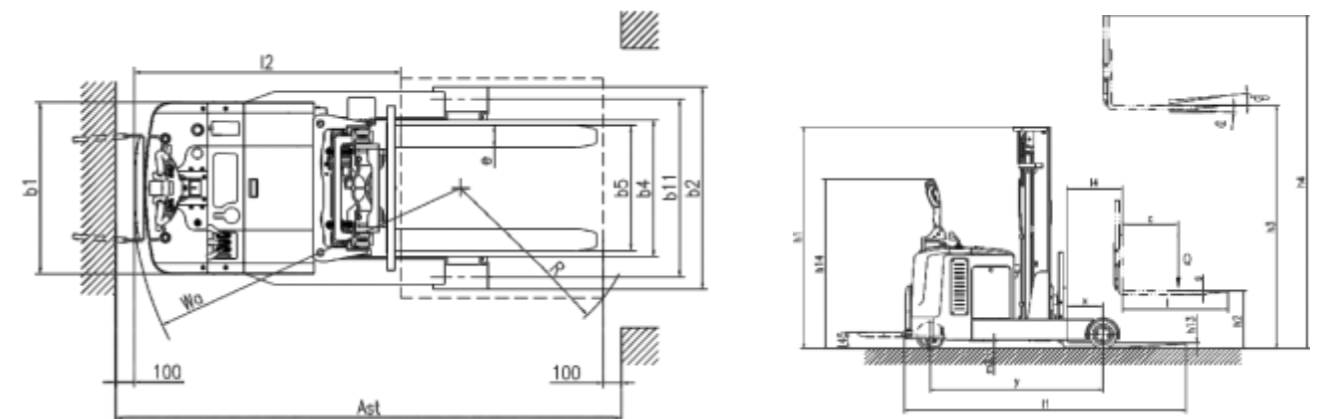
Product Features

- 1.Imported AC controller, Germany ZF vertical gearbox;
- 2.With self-diagnostic function, the handheld unit and the controller can display fault code, and quickly accurately troubleshoot;
- 3.You can choose full-free upgrading, which is convenient for vehicles to have restriction in the container or other ceiling;
- 4.The front wheel uses a large wheel design, the vehicle chassis is improved, the secondary wheel on both sides of the drive wheel provides a safe aid for the chassis, making the whole vehicle have both strong obstacles, and no stability. Operation is more flexible;
- 5.Standard the lifting limit function, when the fork is raised to the item, the system automatically cuts off the uplink power supply, smooth parking, effectively prevents the occurrence of "tweakstorm" accidents.



前移式电动叉车(小前移)参数 Technical Data

特征 Characteristics		Q2030GA		Q2060GA	
1.01	型号	Model			
1.02	驱动方式	Power unit	电动(Electric)		
1.03	操作方式	Operation	站驾式(Standing on)		
1.04	额定载重能力	Rated traction weight	Q (t)	2	
1.05	载荷中心距	Load centre	c (mm)	500	
1.06	前悬距	Axle centre to fork face	x (mm)	324	
1.07	轴距	Wheel base	y (mm)	1551	
1.08	自重(含电瓶)	Service weight with battery	kg	2750	2900
轮子、底盘 Wheels/Tyres					
2.01	轮胎类型	Wheels type	聚氨酯(PU)		
2.02	驱动轮尺寸	Driving wheel size	Φ×w(mm)	Φ250×127 (PU)	
2.03	承载轮尺寸	Bearing wheel size	Φ×w(mm)	Φ250×120	
2.04	平衡轮尺寸	additional wheels (dimensions)	Φ×w(mm)	Φ149×60	
2.05	驱动轮,平衡轮/承载轮数量(x=驱动轮)	Wheels, number front/rear (x = driven)	1, 4/2		
2.06	轮距,驱动端	Track width	b10 (mm)	665	
2.07	轮距,承载端	Track width	b11 (mm)	976	
尺寸 Dimensions					
3.01	门架/货叉倾斜 前倾/后倾	Mast/fork carriage tilt, forward/backward	a/b (°)	3/5	
3.02	最低门架高度	Height of mast, lowered	h1 (mm)	1993	
3.03	自由提升高度	Free lift	h2 (mm)	0	1840
3.04	提升高度	Lift	h3 (mm)	3000	6000
3.05	门架最大高度	Height of mast, extended	h4 (mm)	3860	6920
3.06	操作位置手柄杆最小/最大高度	Overall height(With handle)	h14 (mm)	1075/1502	
3.07	货叉最低高度	Lowered fork height	h13 (mm)	40	
3.08	整车长度(踏板收起)	Overall length	l1 (mm)	2530	
3.09	车体长度(踏板收起)	Length to fork face	l2 (mm)	1460	
3.10	整车宽度	Overall width	b1/ b2 (mm)	1106/940	
3.11	货叉尺寸	Fork dimensions	s/e/l (mm)	40/120/1070	
3.12	货叉外宽	Width of forks	b5 (mm)	240-715	
3.13	支撑臂和载重面间距离	Distance Between Support arms/loading surfaces	b4 (mm)	746	
3.14	前移距离	Reach distance	l4(mm)	500	
3.15	最小离地间隙	Min .Ground clearance	m2 (mm)	63	
3.16	通道宽度:1000x1200托盘(1200跨货叉放置)	Aisle width with pallet 1000 x 1200 across forks	Ast (mm)	2900	
3.17	通道宽度:800x1200托盘(1200沿货叉放置)	Aisle width with pallet 800 x 1200 along forks	Ast (mm)	2960	
3.18	转弯半径	Min .Turning radius	Wa (mm)	1800	
性能 Performance					
4.01	行走速度,满载/空载	Travel speed, laden/unladen	(km/h)	5.2/5.5	
4.02	提升速度,满载/空载	Lifting speed, with/without load	(mm/s)	90/120	130/180
4.03	下降速度,满载/空载	Lowering speed, with/without load	(mm/s)	120/130	160/210
4.04	最大爬坡度,满载/空载	Maximum climbing ability, with/without load	(%)	3/6	
4.05	制动类型	Service brake	电磁制动(Electromagnetic)		
电机 Drive					
5.01	驱动电机功率	Drive motor, 60 minute rating	(kW)	2.5	
5.02	起升电机功率	Lift motor rating at S3 15%	(kW)	3	
5.03	蓄电池电压/容量	Battery voltage/rated capacity	(V/Ah)	24/280	
5.04	电池重量(±5%)	Battery weight (± 5%)	(kg)	275	
其它 Other					
6.01	驱动控制类型	Type of drive control	交流速度控制(AC)		
6.02	噪音水平	Noise level at operator 's ear	(dB(A))	≤75	



前移式电动叉车(小前移) Electric reach stacker (Standing on)

产品特性

1. 进口交流控制器,德国ZF立式齿轮箱;
2. 带自我诊断功能,手持单元与控制器联接后可显示故障代码,迅速精准排查故障;
3. 可以选配全自由提升配置,方便车辆在集装箱内或其他顶棚高度有限的环境内作业;
4. 前轮采用大轮设计,整车底盘得以提高,驱动轮两侧设的辅助轮,又为底盘提供了安全辅助,使得整车既有很强的过障碍能力,又不失稳定性,操作更加灵活;
5. 标配起升电限位功能,当货叉升至顶部时,系统自动切断上行电源,平稳停车,有效防止“冲顶”事故的发生。

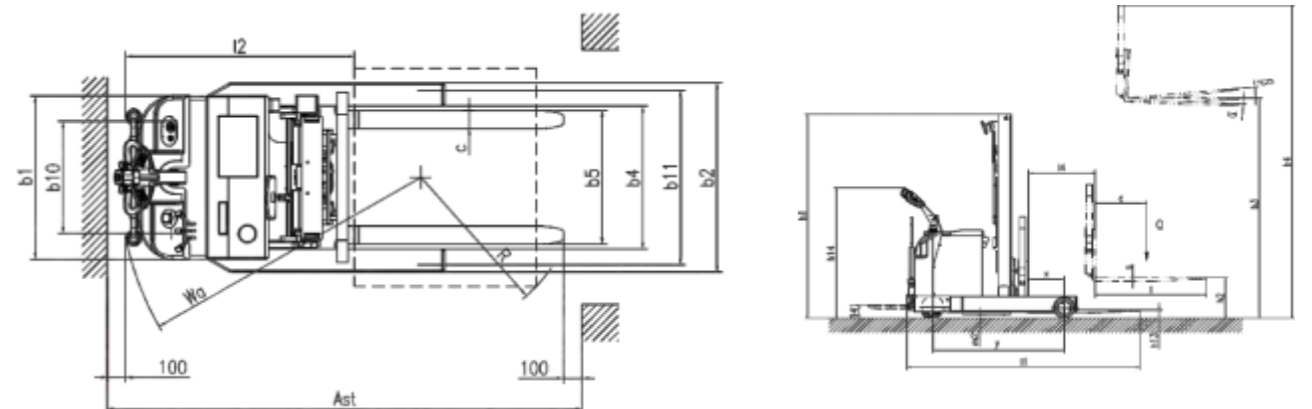
Product Features

1. Imported AC controller, Germany ZF vertical gearbox;
2. With self-diagnostic function, the handheld unit and the controller can display fault code, and quickly accurately troubleshoot;
3. You can choose full-free upgrading, which is convenient for vehicles to have restriction in the container or other ceiling;
4. The front wheel uses a large wheel design, the vehicle chassis is improved, the secondary wheel on both sides of the drive wheel provides a safe aid for the chassis, making the whole vehicle have both strong obstacles, and no stability. Operation is more flexible;
5. Standard the lifting limit function, when the fork is raised to the item, the system automatically cuts off the uplink power supply, smooth parking, effectively prevents the occurrence of "tweakstorm" accidents.



前移式电动叉车(小前移)参数 Technical Data

特征 Characteristics						
1.01	型号	Model	Q1516	Q1530	Q1545	
1.02	驱动方式	Power unit	电动(Electric)			
1.03	操作方式	Operation	站驾式(Standing on)			
1.04	额定载重能力	Rated traction weight	Q (t)	1.3		
1.05	载荷中心	Load centre	c (mm)	500		
1.06	前悬距	Axle centre to fork face	x (mm)	367	356	368
1.07	轴距	Wheel base	y (mm)	1354		
1.08	自重(含电瓶)	Service weight with battery	kg	1745	2010	2210
轮子、底盘 Wheels/Tyres						
2.01	轮胎类型	Wheels type	聚氨酯 (PU)			
2.02	驱动轮尺寸	Driving wheel size	Φ×w(mm)	Φ230×75 (PU) ×82 (whole)		
2.03	承载轮尺寸	Bearing wheel size	Φ×w(mm)	Φ210×70		
2.04	平衡轮尺寸	Additional wheels (dimensions)	Φ×w(mm)	Φ149×60		
2.05	驱动轮,平衡轮/承载轮数量(x=驱动轮)	Wheels, number front/rear (x = driven)	1, 4/2			
2.06	轮距,驱动端	Track width	b10 (mm)	620		
2.07	轮距,承载端	Track width	b11 (mm)	960		
尺寸 Dimensions						
3.01	门架/货叉倾斜前倾/后倾	Mast/fork carriage tilt, forward/backward	a/b (°)	3/5		
3.02	最低门架高度	Height of mast, lowered	h1 (mm)	2155	2121	2095
3.03	自由提升高度	Free lift	h2 (mm)	0	0	1130
3.04	提升高度	Lift	h3 (mm)	1600	3000	4500
3.05	门架最大高度	Height of mast, extended	h4 (mm)	2535	4040	5512
3.06	操作位置手柄杆最小/最大高度	Overall height(With handle)	h14 (mm)	1050/1450		
3.07	货叉最低高度	Fork Height, Lowered	h13 (mm)	50		
3.08	整车长度(货叉长度)	Overall length	l1 (mm)	2252 (950)		
3.09	车体长度	Length to fork face (fork length)	l2 (mm)	1265		
3.10	整车宽度	Overall width	b1/ b2 (mm)	896/1042		
3.11	货叉尺寸	Fork dimensions	s/e/l (mm)	35/ 100/950(1150)		
3.12	货叉外宽	Width of forks	b5 (mm)	200-740		
3.13	支撑臂和载重面间距离	Distance Between Support arms/loading surfaces	b4 (mm)	786		
3.14	前移距离	Reach distance	l4(mm)	500		
3.15	轴距中心处离地间隙	Min .Ground clearance	m2 (mm)	51		
3.16	通道宽度:1000x1200托盘(1200跨货叉放置)	Aisle width with pallet 1000 x 1200 across forks	Ast (mm)	2750	2790	2750
3.17	通道宽度:800x1200托盘(1200沿货叉放置)	Aisle width with pallet 800 x 1200 along forks	Ast (mm)	2800	2840	2800
3.18	转弯半径	Min .Turning radius	Wa (mm)	1670		
3.19	跨轮臂长度	Length across wheel arms	l7 (mm)	1767		
性能 Performance						
4.01	行走速度,满载/空载	Travel speed, laden/unladen	(km/h)	5.2/5.5		
4.02	提升速度,满载/空载	Lifting speed, with/without load	(mm/s)	103/137	95/130	130/197
4.03	下降速度,满载/空载	Lowering speed, with/without load	(mm/s)	105/102	105/102	132/123
4.04	最大爬坡度,满载/空载	Maximum climbing ability, with/without load	(mm/s)	6/8		
4.05	制动类型	Service brake	(%)	电磁制动(Electromagnetic)		
电机 Drive						
5.01	驱动电机功率	Drive motor, 60 minute rating	(kW)	1.5		
5.02	起升电机功率	Lift motor rating at S3 15%	(kW)	3		
5.03	蓄电池电压/容量	Battery voltage/rated capacity	(V/Ah)	24/270		
5.04	电池重量(±5%)	Battery weight (±5%)	(kg)	260		
其它 Other						
6.01	驱动控制类型	Type of drive control	交流速度控制(AC)			
6.02	噪音水平	Noise level at operator 's ear	(dB(A))	≤70		



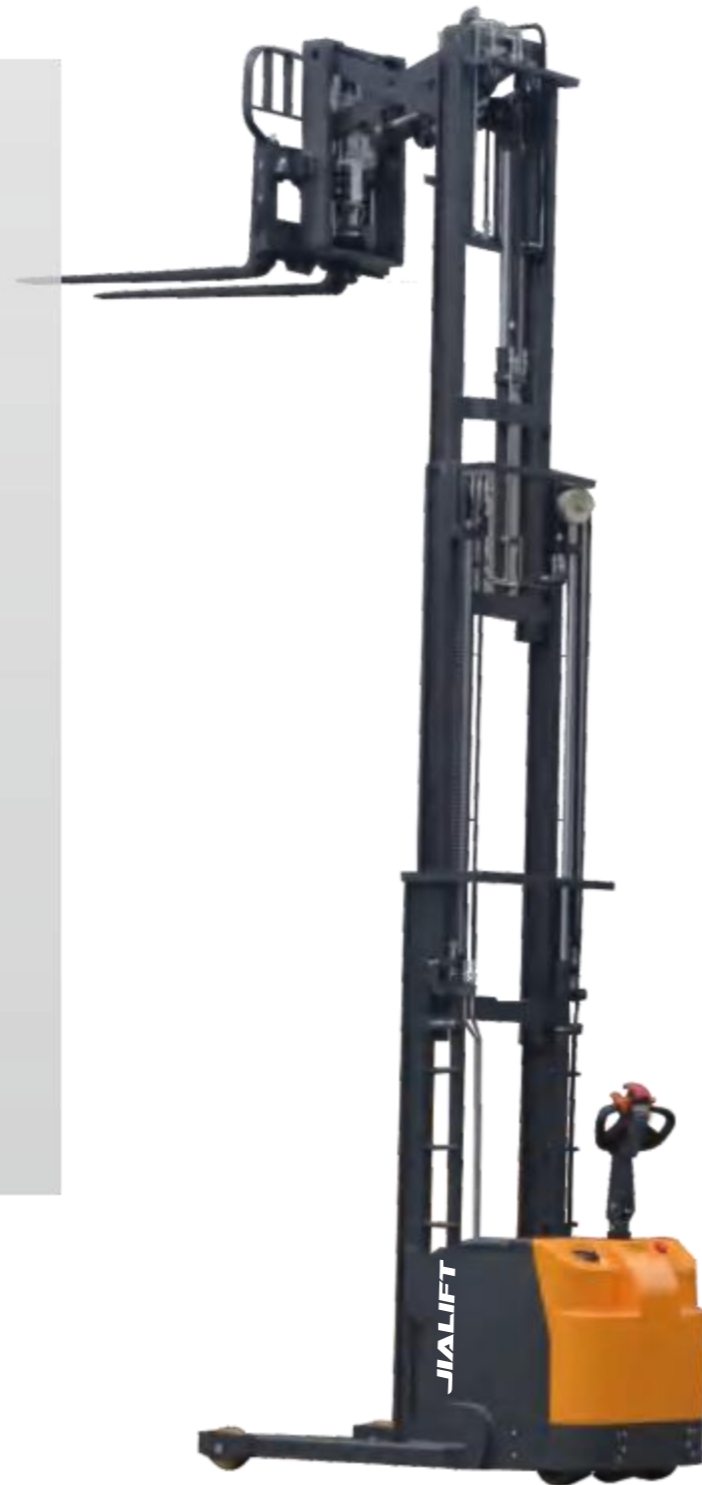
剪刀叉前移式叉车 Electric stacker (Standing on)

产品特性

1. 剪刀前移装置确保车辆在不移门架的情况下，货叉可以前后伸缩；
2. 转弯半径小，适合在狭窄的通道内使用；
3. 作业时货叉伸缩平稳，无冲击；
4. 结实的车腿以及坚固的车架和门架；
5. 起升到一定高度时，行驶速度自动降低，确保作业安全；
6. 标配起升限位功能，当货叉升至顶部时，系统自动切断上行电源，平稳停车，有效防止“冲顶”事故的发生；同时也能减小能量浪费，延长两压系统及相关部件寿命；
7. 标配急停开关，当车辆处于危险状态时，按下急停开关就能切断电源，车辆停止运转，保护操作者人身和设备的安全；
8. 性能卓越的驱动系统，反应灵敏，动态特性好，讨载能力强，动力输出平顺，有效延长锂电池的使用寿命。

Product Features

1. Shear forward device ensures that the cargo fork can be telescoped back and forth without moving the door frame;
2. Small turning radius, suitable for use in narrow channels;
3. Operation fork expansion and stability, no impact;
4. Strong legs and sturdy frame and door frame;
5. When lifting to a certain height, the driving speed will automatically decrease to ensure the safety of operation;
6. Standard lifting limit function, when the fork rises to the top, the system will automatically cut off the uplink power, stop smoothly, effectively prevent the "top" accident: at the same time, it can also reduce the energy waste of long two-voltage system and related components life;
7. Standard emergency stop switch, when the vehicle is in a dangerous state, press the emergency stop switch can cut off the power, the vehicle stops running, protect the safety of the operator and equipment;
8. performance grass more drive system, responsive, dynamic characteristics, load handling ability, power output smooth, effective proof of long battery life.



Q15GC剪刀叉前移式叉车参数 Technical Data

特征 Characteristics		Q1530GC		Q1545GC	
1.01	型号	Model		Q1530GC	Q1545GC
1.02	驱动方式	Power unit		电动(electric)	电动(electric)
1.03	操作方式	Operation		站驾式(Seated-on)	站驾式(Seated-on)
1.04	额定载重能力	Rated traction weight	Q (kg)	1500	1500
1.05	载荷中心距	Load centre	c (mm)	500	500
1.06	前悬距	Axle centre to fork face	x (mm)	365	350
1.07	轴距	Wheel base	y (mm)	1456	1456
1.08	自重 (含电瓶)	Service weight with battery	kg		
轮子、底盘 Wheels/Tyres					
2.01	轮胎类型	Wheels type		聚氨酯 (polyurethane)	聚氨酯 (polyurethane)
2.02	驱动轮尺寸	Driving wheel size	Φ×w(mm)	Φ250×75	Φ250×75
2.03	承载轮尺寸	Bearing wheel size	Φ×w(mm)	Φ150×82	Φ150×82
2.04	平衡轮尺寸	additional wheels (dimensions)	Φ×w(mm)	Φ149×60	Φ149×60
2.05	驱动轮, 平衡轮/承载轮数量 (x=驱动轮)	Wheels, number front/rear (x = driven)		1, 4/2	1, 4/2
2.06	轮距, 驱动端	Track width	b10 (mm)	620	620
2.07	轮距, 承载端	Track width	b11 (mm)	984	984
尺寸 Dimensions					
3.01	门架/货叉倾斜 前倾/后倾	Mast/fork carriage tilt, forward/backward	a/b (°)	3/5	3/5
3.02	最低门架高度	Free lift	h1 (mm)	2050	2220
3.03	自由提升高度	Lift	h2 (mm)	0	1310
3.04	提升高度	Height of mast, extended	h3 (mm)	3000	4500
3.05	门架最大高度	Height of seat/stand-on platform	h4 (mm)	3900	5425
3.06	操作位置手柄杆最小/最大高度	Overall height(With handle)	h14 (mm)	1050/1450	1050/1450
3.07	货叉最低高度	Lowered fork height	h13 (mm)	40	40
3.08	整车长度 (货叉长度)	Overall length	l1 (mm)	2375 (950)	2375 (950)
3.09	车体长度	Length to fork face	l2 (mm)	1400	1400
3.10	整车宽度	Overall width	b1/ b2 (mm)	896/1113	896/1113
3.11	货叉尺寸	Fork dimensions	s/e/l (mm)	35/100/950	35/100/950
3.12	货叉外宽	Width of forks	b5 (mm)	200-840	200-840
3.13	前移距离	Forward distance	l4(mm)	500	500
3.14	轴距中心处离地间隙	Min .Ground clearance	m2 (mm)	55	55
3.15	通道宽度: 1000x1200托盘 (1200跨货叉放置)	Aisle width with pallet 1000 x 1200 across forks	Ast (mm)	2850	2850
3.16	通道宽度: 800x1200托盘 (1200沿货叉放置)	Aisle width with pallet 800 x 1200 along forks	Ast (mm)	2905	2905
3.17	转弯半径	Min .Turning radius	Wa (mm)	1765	1765
性能 Performance					
4.01	行走速度, 满载/空载	Travel speed, laden/unladen	(km/h)	5.2/5.5	5.2/5.5
4.02	提升速度, 满载/空载	Lifting speed, with/without load	(mm/s)		100/150
4.03	下降速度, 满载/空载	Lowering speed, with/without load	(mm/s)		170/220
4.04	前移速度, 满载/空载	Forward speed, with/without load	(mm/s)		73/58
4.05	最大爬坡度 满载/空载	Maximum climbing ability, with/without load	(%)	3/6	3/6
电机 Drive					
5.01	制动类型	Service brake		电磁制动(electromagnetic)	
5.02	驱动电机功率	Drive motor, 60 minute rating	(kW)	1.5	1.5
5.03	起升电机功率	Lift motor rating at S3 15%	(kW)	3.0	4.5
5.04	蓄电池电压/容量	Battery voltage/rated capacity	(V/Ah)	24/350	24/350
5.05	蓄电池重量(±5%)	Battery weight (± 5%)	(kg)	230	230
其它 Other					
6.01	驱动控制类型	Type of drive control		交流速度控制	交流速度控制
6.02	噪音水平	Noise level at operator 's ear	(dB(A))	≤70	≤70

